

Superior quality since  
1984



# Owners Manual

**HYDRAULIC WHEEL LIFTER**

**B O R U M**  
INDUSTRIAL WORKSHOP EQUIPMENT

**INDUSTRIAL  
QUALITY**



#### Specifications:

- Safe Working Capacity: 750kg
- Max. Tyre Diameter: 1300mm
- Lift Arm Length: 660mm
- Lift Arm Spread: 533mm(min)- 635mm(max)
- Lifting Range: 60 - 275mm
- Tilt Range: -2.5 to 10 degrees
- Hydraulic Ram Travel: 100mm
- Dimensions: 787(L) x 1092(W) x 895(H)mm
- Weight: 70kg

#### About the Borum brand

Our **“heavy duty commercial”** range of **Borum Industrial** equipment has been manufactured to exacting standards for the past **34 years**. We specify industrial quality components and design to ensure a long and durable working life in **commercial transport, mining, earthmoving and railway** environments. Our **Borum Industrial** range of equipment is focused on achieving superior professional standards, reliability, quality, and are covered by a **12 month trade use warranty**.

## WARNING INFORMATION



**IMPORTANT: READ ALL INSTRUCTIONS BEFORE USE**

**! WARNING**

The instructions and warnings contained in this manual should be read and understood before using or operating this equipment. Do not allow anyone to use or operate this equipment until they have read this manual and have developed a thorough understanding of how this equipment works. Failure to observe any of the instructions contained in the manual could result in severe personal injury to the user or bystanders, or cause damage to the equipment and property. Keep this manual in a convenient and safe place for future reference.

The warnings, cautions and instructions discussed in this instruction manual cannot cover all possible conditions and situations that may occur. It must be understood by the operator that common sense and caution are factors which cannot be built into this product, but must be supplied by the operator.

Whilst every effort has been made to ensure accuracy of information contained in this manual, the Borum policy of continuous improvement determines the right to make modifications without prior warning.

## CONTENTS

WARNING INFORMATION .....	1
STANDARD OPERATING PROCEDURE .....	2
ASSEMBLY, OPERATION, PREVENTITIVE MAINTENANCE .....	3
TROUBLESHOOTING .....	6
PARTS LIST & DIAGRAM .....	7
WARRANTY .....	8

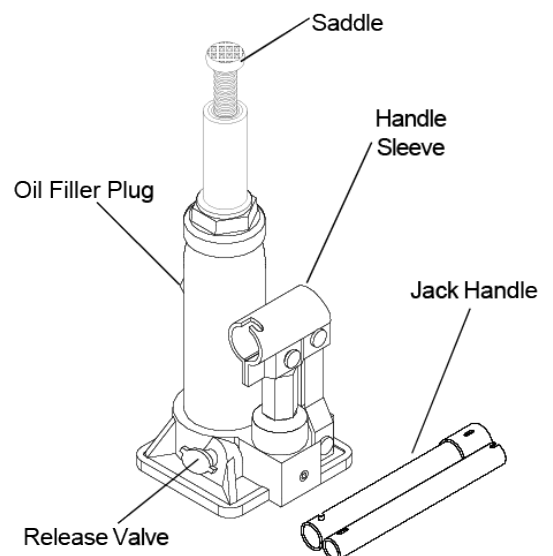
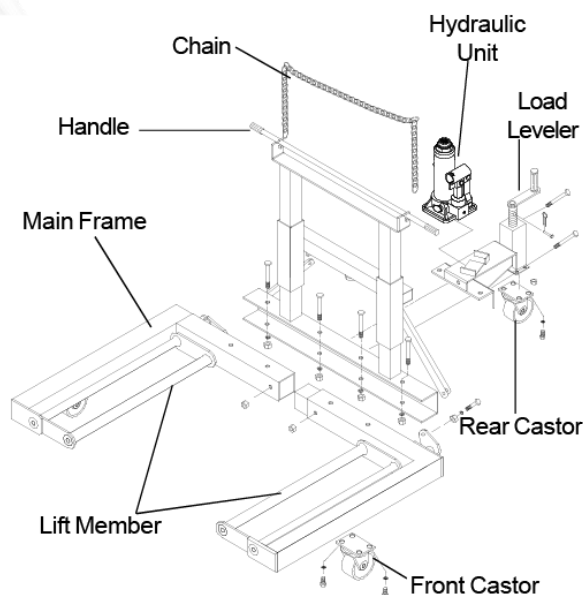
**Intended Use**

This Hydraulic Wheel Lifter is designed to facilitate the removal and installation of pneumatic tyres and wheel assemblies on earthmovers, trucks, buses and trailers.

## STANDARD OPERATING PROCEDURE

### OPERATIONAL SAFETY INFORMATION

- KEEP work area clean and well lit. Cluttered or dark work areas invite accidents.
- ALWAYS wear suitable personal protective clothing, gloves and eyewear manufactured to the latest Australian Safety Standards.
- ALWAYS ensure that adequate lighting is available. A minimum intensity of 300 lux should be provided. Ensure that lighting is placed so that you will not be working in your own shadow.
- ALWAYS secure and fully support vehicle
- DO NOT use this equipment to raise or move any part of a vehicle.
- ALWAYS use according to vehicle's service instructions only. It is beyond the scope of this manual to provide rim/tyre repair guidelines. It is the USERS RESPONSIBILITY to consult a rim/tyre repair technical manual for full instructions for each type of rim or tyre.
- Do not overload this wheel lifter beyond its rated capacity. Overloading beyond its rated capacity can cause damage to or failure of the wheel lifter.
- Always securely wrap the safety chain around the wheel before use.
- No person should get any part of the body beneath a wheel that is loaded.
- Use only on hard level surfaces. Use on other than hard level surfaces can result in instability.
- Keep hands & feet clear of the hinge mechanism & ground contact area when under load.
- DO NOT operate unit if damaged.
- DO NOT allow untrained persons to operate this wheel lifter.
- Ensure all non-essential persons keep a safe distance whilst the wheel lifter is in use.
- Maintain correct balance and footing. Ensure the floor is not slippery and wear non-slip shoes.
- When servicing, use only Borum identical replacement parts. Use of any other parts will void the warranty.
- Use the right product for the job. There are certain applications for which this wheel lifter was designed. Do not modify and do not use for a purpose for which it was not intended.



# ASSEMBLY, OPERATION, PREVENTITIVE MAINTENANCE

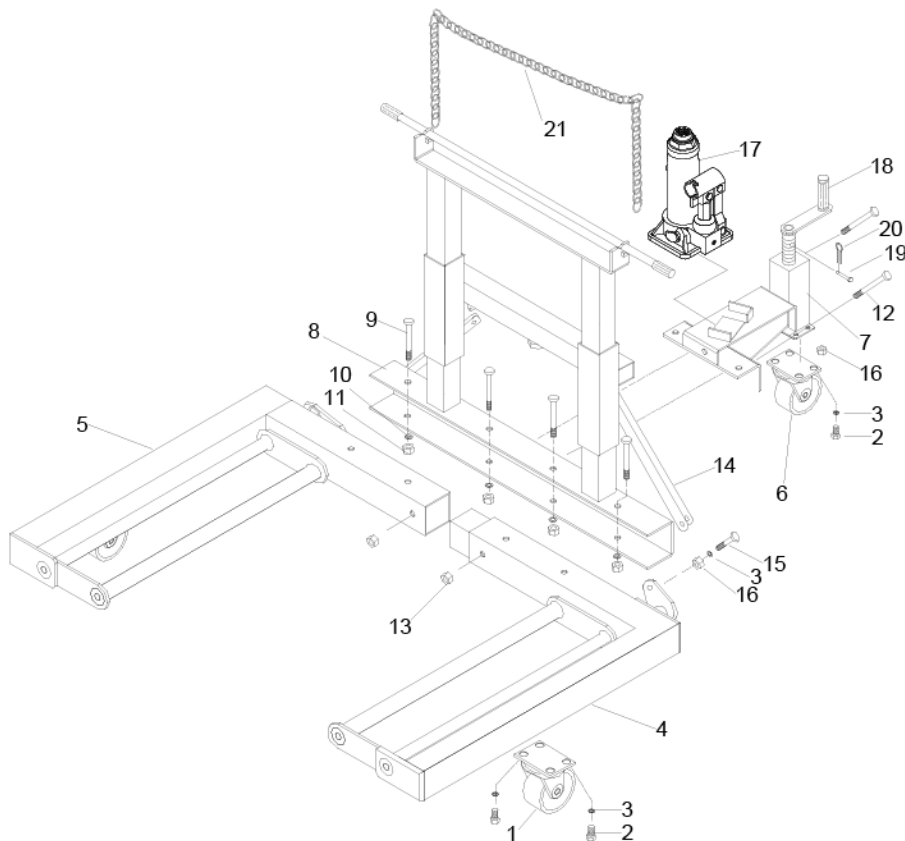
## 1. FEATURES

This **Borum Industrial** Hydraulic Truck Wheel Lifter is designed for the removal, installation and transportation of single, tandem and duplex truck tyre and wheel combinations. Hydraulically activated lift arms handle wheel assemblies up to 400mm frame with tilt feature that aligns lift arms with spindle angle.

## 2. ASSEMBLY

**Unpacking:** after removing the packing material, make sure the product is in perfect condition and that there are no visible damaged parts. The packaging materials (Polyethylene bags, polystyrene etc.), must be disposed of in an appropriate refuse collection container. These materials must not be left within the reach of children as they are potential sources of danger.

1. Attach front castors (1) into left main frame (4) and right main frame (5) with M8x16 bolts and washers (2 & 3).
2. Attach rear castor (6) to load leveler (7), with M8x16 bolts, washers and nuts (2, 3 & 16).
3. Insert left main frame (4) in right main frame (5).
4. Attach upright (8) and load leveler (7) into the main frame assembly with two M12x100 bolts and nuts (12 & 13) and four M14x110 bolts, washers and nuts (9, 10 & 11).
5. Attach support straps (14) to the upright and main frame assemblies with M8x34 bolts, washers and nuts (3,15 & 16).
6. Place the hydraulic power unit (17) onto the load leveler assembly (7).
7. Insert load leveler handle (18) to load leveler (7) with bolts and pin (19 & 20)
8. Attach the chain (21) onto upright assembly.



### 3. BEFORE USE

Conduct a thorough visual inspection checking for leaks and any abnormal conditions, such as cracked welds, leaks, and damaged, loose, or missing parts.

Apply grease to the front and rear faces of the main upright to assist the smooth sliding of upper and lower strut support rollers.

Purge in transit air bubbles

- With ram lowered, locate and remove oil filler plug.
- Open Release Valve and pump handle 8-10 times.
- This purges the hydraulic system of pressurised air trapped in reservoir.
- Check fluid level. Correct level is just below oil filler plug hole.
- Reinstall oil filler plug.

Lubricate Moving Components

A periodic coating of light lubricating oil to pivot points, axles and hinges will help to prolong the life of this wheel lifter.

### 4. OPERATION

Prior to each use always conduct a visual inspection checking for and any abnormal conditions, such as cracked welds, and damaged, loose, or missing parts.

1. Set emergency brake, chock tyres of diagonally opposed wheel/s in both directions AND take every precaution necessary to ensure set up is stable and prevent inadvertent vehicle movement.
2. Jack up the vehicle and secure on safety stands or blocking devices immediately. DO NOT work under an unsecured load!
3. When tyre & wheel assembly are ready to remove, position wheel lifter to accept tyre & wheel assembly and secure load with chain restraint.
4. Use jack handle to turn the release valve clockwise until tight. DO NOT OVERTIGHTEN.
5. Insert jack handle into handle sleeve of hydraulic unit and pump until lifting arms reach desired height.

**Note:** Do not use wheel dolly to free a seized wheel assembly. For typical practice of taking out a seized wheel assembly, a long metal bar can be used to pry the wheel assembly from the stuck wheel axle. If in doubt, always follow vehicle's manufacturer manual on how to remove tire & wheel assembly.

6. Use load leveler to adjust the angle.
7. Carefully move loaded wheel dolly away from hub.
8. Follow process in reverse order to re-install wheel on to vehicle.

**Note:** Before moving loaded wheel dolly, always secure the load with provided chain.

### 5. STORAGE

When not in use, always store this Hydraulic Wheel Lifter with the hydraulic unit fully retracted to protect from dirt, dust and corrosion. If this Hydraulic Wheel Lifter is not regularly cleaned and maintained correctly the components will become clogged, corroded and will not perform at its best. Application of a coating of light lubricating oil to pivot points and hinges will help to prevent rust and assure that assemblies move freely. Store in a secure dry location.

## 6. MAINTENANCE

### Inspection:

Inspect this Hydraulic Wheel Lifter for damage, wear, broken or missing parts and that all components function before each use.

### Cleaning:

Periodically check the pushrod, claws, feet and shovel for signs of rust or corrosion. Clean as needed and wipe with an oily cloth. Never use sandpaper or abrasive material on these surfaces.

### Lubrication:

Application of a coating of light lubricating oil to pivot points and hinges will help to prevent rust and assure that pump assemblies move freely.

### Changing oil:

For best performance, replace the fluid at least once per year.

- With hydraulic unit pump piston fully depressed and saddle in the fully lowered position, remove hydraulic unit (jack) from load leveler assembly,
- Remove the oil filler plug.
- Lay the hydraulic unit on its side and drain the fluid into a suitable container.
- Refill with good quality hydraulic jack oil.
- Fill to just below the oil filler plug with the hydraulic unit standing vertically.
- Re-install oil filler plug.
- Re-install hydraulic unit into the load leveler assembly.

**Note:** ALWAYS dispose of used hydraulic fluid in accordance with local regulations.

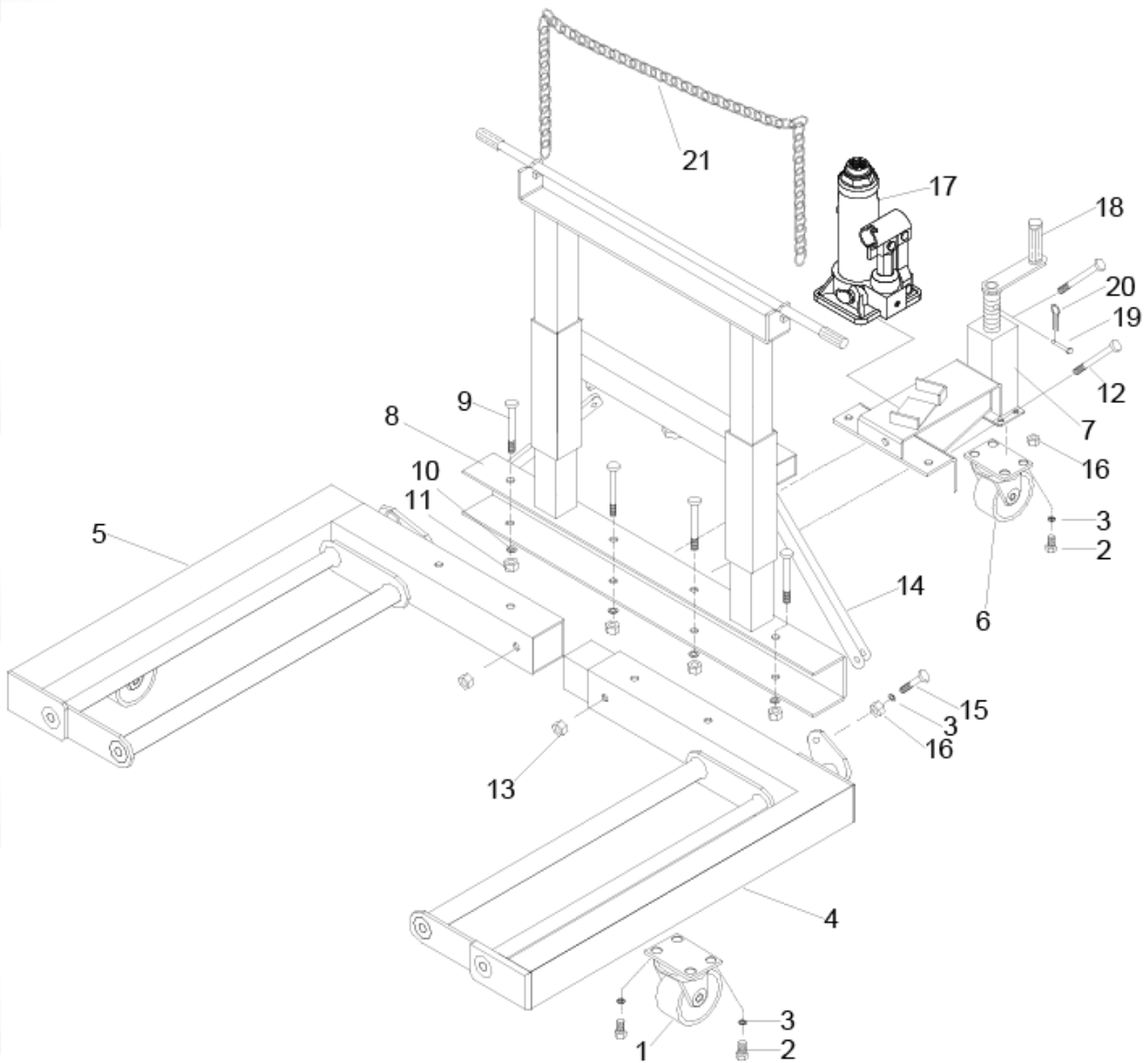
## 7. SERVICE & REPAIR

Any Hydraulic Wheel Lifter found damaged in any way, or found to be worn or operates abnormally should be removed from service until repaired by an authorised service agent. Owners and / or operators should be aware that repair of this product may require specialised equipment and knowledge. Only authorised parts, labels, decals shall be used on this equipment. Annual inspection of the Hydraulic Wheel Lifter is recommended and can be made by an authorised repair facility to ensure that your equipment is in optimum condition and that the equipment has the correct decals and safety labels specified by the manufacturer.

## TROUBLESHOOTING

Symptom	Possible Cause	Corrective Action
Hydraulic unit will not lift load	<ul style="list-style-type: none"> <li>• Release valve not tightly closed</li> <li>• Overload condition</li> </ul>	<ul style="list-style-type: none"> <li>• Ensure release valve tightly closed</li> <li>• Check load and remedy overload condition</li> </ul>
Hydraulic unit bleeds off after lift	<ul style="list-style-type: none"> <li>• Release valve not tightly closed</li> <li>• Overload condition</li> <li>• Hydraulic unit malfunction</li> </ul>	<ul style="list-style-type: none"> <li>• Ensure release valve tightly closed</li> <li>• Check load and remedy overload condition</li> <li>• Contact service centre</li> </ul>
Hydraulic unit will not lower after unloading	<ul style="list-style-type: none"> <li>• Reservoir overfilled</li> <li>• Linkages binding</li> </ul>	<ul style="list-style-type: none"> <li>• Drain fluid to correct level</li> <li>• Clean and lubricate moving parts</li> </ul>
Oil leaks	<ul style="list-style-type: none"> <li>• Worn or damaged seals</li> </ul>	<ul style="list-style-type: none"> <li>• Contact service centre</li> </ul>
Poor performance	<ul style="list-style-type: none"> <li>• Fluid level low</li> <li>• Air trapped in system</li> </ul>	<ul style="list-style-type: none"> <li>• Top up hydraulic fluid level</li> <li>• Conduct purge of air bubbles (See page4)</li> </ul>
Will not lift to full extension	<ul style="list-style-type: none"> <li>• Low hydraulic oil level</li> </ul>	<ul style="list-style-type: none"> <li>• Top up hydraulic fluid to correct level</li> </ul>

# PARTS LIST & DIAGRAM



Part	Description	Qty
1	Front Swivel Castor	2
2	Bolt	12
3	Washer	14
4	Left Main Frame	1
5	Right Main Frame	1
6	Rear Swivel Castor	1
7	Load Leveller Assembly	1
8	Upright Assembly	1
9	Bolt	4
10	Washer	4
11	Nut	4

Part	Description	Qty
12	Bolt	2
13	Nut	2
14	Support Strap	2
15	Bolt	2
16	Nut	2
17	Hydraulic Power Unit	1
18	Handle	1
19	Pin	1
20	Clip	1
21	Chain	1



## WARRANTY

BORUM Industrial products have been carefully tested and inspected before shipment and are guaranteed to be free from defective materials and workmanship for a period of 12 months from the date of purchase except where tools are hired out when the guarantee period is ninety days from the date of purchase. Should this piece of equipment develop any fault, please return the complete tool to your nearest authorised warranty repair agent or contact TQB Brands Pty Ltd Warranty team – [warranty@tqbbrands.com.au](mailto:warranty@tqbbrands.com.au).

If upon inspection it is found that the fault occurring is due to defective materials or workmanship, repairs will be carried out free of charge. This guarantee does not apply to normal wear and tear, nor does it cover any damage caused by misuse, careless or unsafe handling, alterations, accident, or repairs attempted or made by any personnel other than the authorised TQB Brands Pty Ltd repair agent. This guarantee applies in lieu of any other guarantee expressed or implied and variations of its terms are not authorised.

Your TQB Brands Pty Ltd guarantee is not effective unless you can produce upon request a dated receipt or invoice to verify your proof of purchase within the 12month period.

### Consumer Guarantee

Our goods come with a guarantee that cannot be excluded under the Australian Consumer Law. You are entitled to a replacement or refund for a major failure and compensation for any other reasonably foreseeable loss or damage. You are also entitled to have the goods repaired or replaced if the goods fail to be of acceptable quality and the failure does not amount to a major failure.



All images and illustrations shown are for reference purposes only. All information, specifications and illustrations in this manual are based on the latest information available at the time of publication and are subject to change without notice. The information in this manual is periodically revised to ensure the latest information is included. Download the latest version of this manual and other related technical documentation from [www.tqbbrands.com.au](http://www.tqbbrands.com.au)