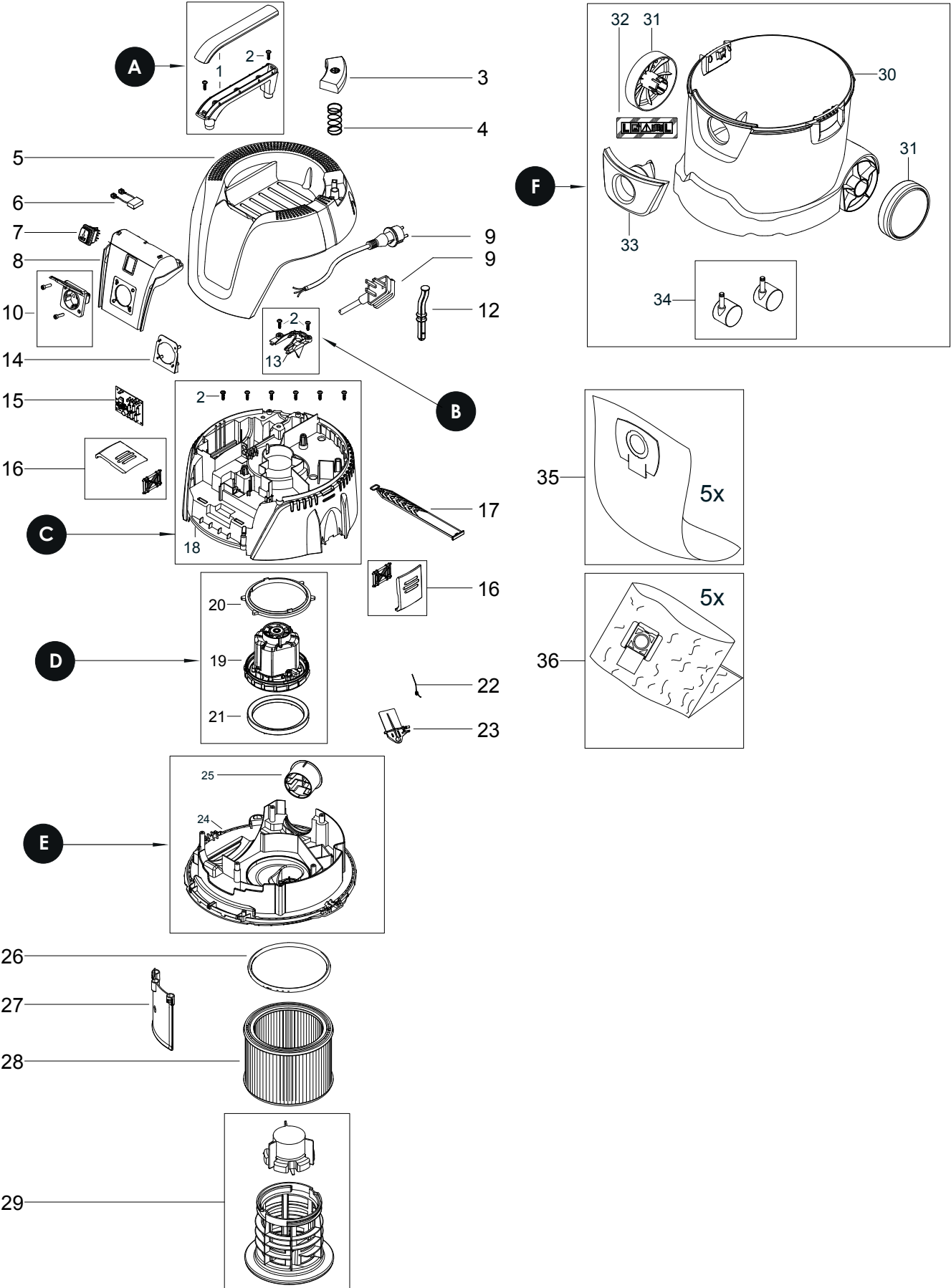


# Exploded view of Dust Extractor 1025 L

Updated 23.10.2020



## Dust Extractor 1025L Spare Part kits

Electrical tool must be serviced by a qualified repair person and in accordance with national requirements.

**Note!** Repairs done by non-authorized repairer will breach the Mirka warranty.

Mirka Code	Item	Description	Kit	QTY
<b>8999001111</b>		<b>Handle kit</b>		
	1	Handle	A	2
	2	Screws 5x18mm		2
<b>8999001311</b>		<b>Power Cord Outlet kit</b>		
	2	Screws 5x18mm	B	2
	13	Outlet		1
<b>8999001811</b>		<b>Clamping Plate kit</b>		
	2	Screws 5x18mm	C	6
	18	Clamping Plate		1
<b>8999001911</b>		<b>Motor Assembly (230V)</b>		
	19	Motor	D	1
	20	Upper Motor Sealing		1
	21	Lower Motor Sealing		1
<b>8999002411</b>		<b>Baseplate kit</b>		
	24	Baseplate	E	1
	25	Outlet Fitting		1
<b>8999003011</b>		<b>Container kit</b>		
	30	Container		1
	31	Wheels 130 mm	F	2
	32	Label Dust Class L		1
	33	Inlet Fitting		1
	34	Wheels 50mm		2

Separate spare parts on next page.

## Dust Extractor 1025L Spare Parts

Mirka Code	Item	Description	Kit	QTY
	1	Handle	A	1
	2	Screws 5x18mm	A,B,C	2
	3	Push & Clean Button		1
	4	Spring For Push & Clean		1
<b>8999000511</b>	5	<b>Cover</b>		1
<b>8999000611</b>	6	<b>Anti-Interference Capacitor Set</b>		1
<b>8999000711</b>	7	<b>Switch</b>		1
<b>8999000811</b>	8	<b>Switch and Socket Board</b>		1
<b>8999711111</b>	9	<b>Power Cord (EU)</b>		1
<b>8999711211</b>	9	<b>Power Cord 230V (GB)</b>		1
8999041411	9	Power Cord (ANZ)		1
8999241711	9	Power Cord (CN)		1
<b>8999601911</b>	10	<b>Socket (EU) 16A/250V</b>		1
<b>8999711011GB</b>	10	<b>Socket (GB) 13A/250V</b>		1
8999211111	10	Socket (AU/NZ) 10A/250V		1
8999212811	10	Socket (CN) 10A/250V		1
<b>8999001211</b>	12	<b>Rod for Push &amp; Clean</b>		1
	13	Outlet for Power Cord	B	1
8999001411	14	Plug Socket Plate		1
<b>8999001511</b>	15	<b>Electronic Board 230-240V</b>		1
<b>8999001611</b>	16	<b>Container Clamp</b>		1
<b>8999001711</b>	17	<b>Rubber Strap</b>		1
	18	Clamping Plate	C	1
	19	Motor (230V)	D	1
	20	Upper Motor Sealing	D	1
	21	Lower Motor Sealing	D	1
<b>8999602211</b>	22	<b>Torsion Spring</b>		1
<b>8999002311</b>	23	<b>Flap</b>		1
	24	Baseplate	E	1
	25	Outlet Fitting	E	1
<b>8999002611</b>	26	<b>Sealing</b>		1
	27	Deflector Shield		1
<b>8999600411</b>	28	<b>Filter</b>		1
<b>8999602511</b>	29	<b>Filter Support Cage</b>		1
	30	Container	F	1
<b>8999003111</b>	31	<b>Wheel 130 mm</b>	F	2
	32	Label Dust Class L	F	1
<b>8999003311</b>	33	<b>Inlet Fitting</b>	F	1
<b>8999003411</b>	34	<b>Wheels 50mm</b>	F	2
<b>8999000211</b>	35	<b>Dust Bags Fleece</b>		5
	36	Dust Bags Disposal		5