

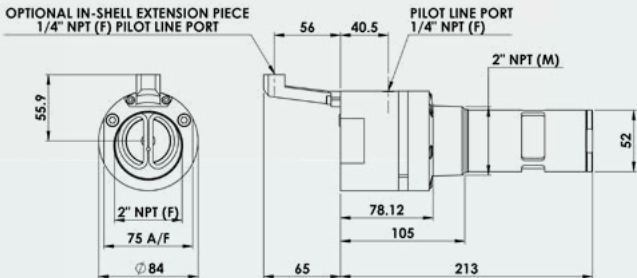
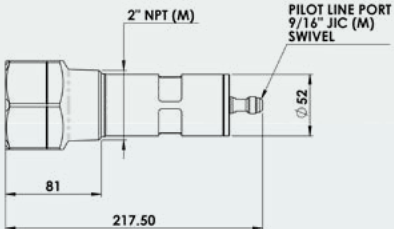
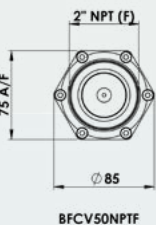
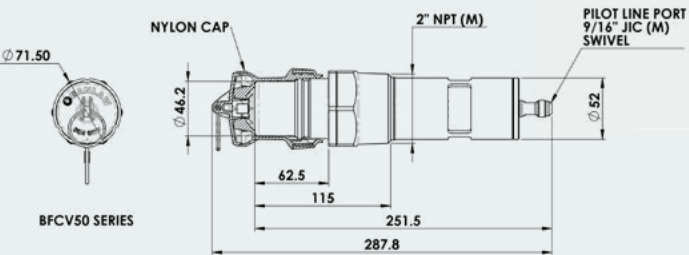
Flow Control Valve 2"



Our 2" Flow Control Valves are designed to mount in any standard industry receiver shell. They support diesel flow rates from 100lpm to 800lpm.

These Flow Control Valves can be mounted directly to the fuel tank on a vehicle. To support many installation scenarios, they are available with or without an integrated receiver, and come in either internal or external pilot line configuration.

LEFT TO RIGHT: BFCV50E / BFCV50ES / BFCV50NPTF / BFCV50



Part Number	Product Description	Tech Specs	Shipping - Dimensions & Weight	Items Included
BFCV50	FillSafe Zero, Flow control Valve, 2" NPT (M), c/w Mining Receiver	2" NPTM	29x8x8cm 1.73kg	Includes Cap
BFCV50E	FillSafe Zero, Flow control Valve, 2" NPT (MF), External Pilot Line	2" NPTMF	23x9x9cm 1.9kg	❄️
BFCV50ES	FillSafe Zero, Flow control Valve, 2" NPT (MF), In Shell, External Pilot Line	2" NPTMF	28x11x8cm 2kg	❄️
BFCV50NPTF	FillSafe Zero, Flow control Valve, 2" NPT (MF), Internal Pilot Line	2" NPTMF	22x8x8cm 1.77kg	❄️
BFCV50R	FillSafe Zero, Flow control Valve, 2" NPT (M) - c/w Rail Receiver	2" NPTM	29x8x8cm 1.73kg	Includes Cap 🚂
BFCV50-CT	FillSafe Zero, Flow control Valve, 2" NPT (M), c/w Mining Receiver - Cold Temp	2" NPTM	29x8x8cm 1.73kg	Includes Cap ❄️
BFCV50R-CT	FillSafe Zero, Flow control Valve, 2" NPT (M) - c/w Rail Receiver - Cold Temp	2" NPTM	29x8x8cm 1.73kg	Includes Cap 🚂❄️