



GX21

DESCRIPTION

GX21 120V	PART # 24Y680
GX21 230V	17H221

SPECIFICATIONS

MAX TIP SIZE:	0.021
MAX GPM (LPM):	0.47 (1.8)
MAX PSI (BAR):	3000 (207)
MOTOR:	7/8 HP DC
WEIGHT (LBS):	28.5 (13Kg)

INCLUDES

- SG3™ Spray Gun
- RAC® X 515 SwitchTip™ and Guard
- 1/4 in x 25 ft (6.4 mm x 15 m) Hose

ACCESSORIES

- JetRoller System 24U170
Paints twice as fast as manual rolling.



Includes Easy-to-Carry
Shoulder Strap

Performance and Durability for the Pro.

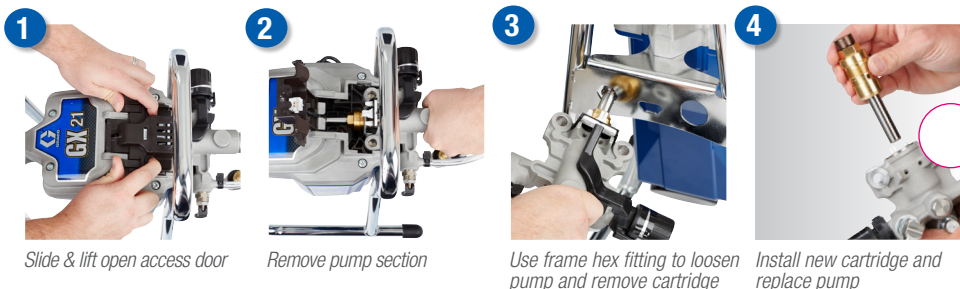


1 ProXChange™ Pump Replacement System

The Do-It-Yourself Pump Repair System

In four simple steps, you can remove and replace the pump cartridge.

- ▶ No tools needed to remove pump
- ▶ Simply lift door to remove pump!



Slide & lift open access door

Remove pump section

Use frame hex fitting to loosen
pump and remove cartridge

Install new cartridge and
replace pump

2 **PushPrime™**

Assures fast priming every time—loosens stuck inlet check valve in case of priming issues.



PushPrime

3 **ProXChange Piston Pump**

Patented power-piston pump for greater reliability and long life.



Adjustable Pressure Control

4 **Adjustable Pressure Control**

Allows spraying or rolling a wide range of coatings.

5 **Protective Chrome-Plated Stand**

Easy to carry and prevents damage while transporting.



InstaClean Filter

6 **InstaClean™ Filter**

Added filtration to reduce tip clogging. Self cleans with pressure relief through drain valve.

7 **Flexible Clear Tubing**

Easy to use and clean. Spray water or solvent-based finishes directly from 1 or 5-gallon containers.

Direct Immersion Design

Draws paint directly from paint buckets.



Convenient Drip Cup

Eliminates the chances for paint drips.

