



# HTX 2030 GAS MECHANICAL TEXTURE SPRAYER

## SPRAY THE MOST DEMANDING MATERIALS

The HTX 2030 is specifically engineered to spray nearly everything — from exterior smooth and aggregate coatings, elastomerics, acrylic coatings, drywall mud finishes, as well as paints and primers, with the available high-pressure MaxLife® Endurance™ Pump.



### TIME-SAVING PRODUCTION RATES

#### High-Output Texture Pump

- Pump aggregated materials up to 2.0 mm with extra large passages
- More uptime with no-tools hose connections at pump and gun
- Consistent, optimal performance with innovative foot valve soft seal



### FULL-RANGE FLOW CONTROL

#### PowerFlo™ Control System

- Remotely stops and starts material flow right at the pump
- Smooth, controlled material flow prevents pack-out conditions
- Soft start eliminates material blast to ensure finish quality

### REDUCED PACK-OUT CONDITIONS

#### StraightThru™ Fluid Path

- Easily spray more demanding and aggressive aggregate materials

### APPLICATORS FOR EVERY JOB

#### FreeFlo™ Inline Gun

- Maximum flow from oversized, unobstructed fluid passages

#### Trigger Gun Applicator

- One-handed trigger shutoff prevents material oozing
- Ideal for spraying EIFS and synthetic stucco finish coats
- Consistent material coverage in either a round pattern or wide fan pattern

#### 3 ft Pole Gun\*

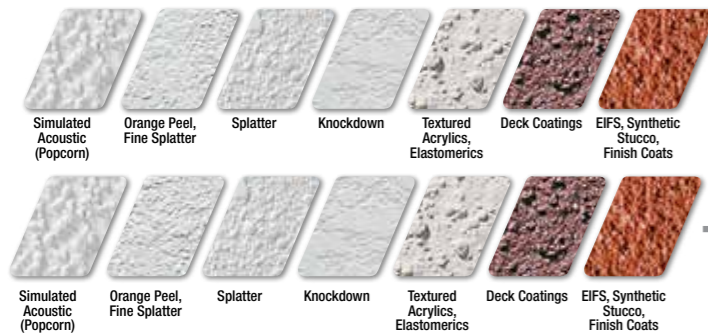
- Extended reach to minimize repositioning of lifts and ladders
- Spray in a wide fan pattern

#### FlexHead™ Pole Gun\*

- Greater control in tight areas—on scaffolding and around architectural detail
- Spray in a wide fan pattern

### TEXTURE APPLICATIONS

Interior and exterior texture finishes with aggregate size up to 2.0 mm



TEXSPRAY HTX GAS	PART #
TexSpray HTX 2030 Complete w/ FreeFlo Inline Gun	258740
TexSpray HTX 2030 Complete w/ Trigger Gun Applicator	278677
TexSpray HTX 2030 Complete Plus+ w/ FreeFlo Inline Gun	258741
TexSpray HTX 2030 Complete Plus+ w/ Trigger Gun Applicator	278678

\*Sold separately.

# AIR-POWERED TEXTURE SPRAYERS

## HIGH-PERFORMANCE SOLUTIONS FOR HEAVY-DUTY JOBS

Powered by your external air compressor, these air-powered texture solutions get the job done fast — whether coating a large interior surface or applying an exterior aggregate finish on a large commercial job.



### GTX 2000EX

A highly portable texture system for both smooth materials and those with fine aggregates, the GTX 2000EX is the ideal solution for drywall muds, deck coatings, and exterior aggregate acrylic and elastomeric finishes.

TEXSPRAY GTX	PART #	GPM (LPM)
TexSpray GTX 2000EX	257030	4.0 (15.1)

### JOBSITE-PROVEN PERFORMANCE

#### Husky™ 1040 Double Diaphragm Pump

- Texture delivery rates to 15 lpm from durable, high-output 1-inch pump

### DURABLE, USER-FRIENDLY SPRAYING

#### Air Spray Heavy-Duty Trigger Gun

- Pump heavy mud mixes and larger aggregate with oversized fluid passages
- Quick nozzle changes with extra-coarse gun head threads

### LONGER SPRAY TIME

#### Largest 65L Capacity Hopper

- Easy cleanup and removal with no tools

### COMPLETE CONTROL

#### Separate Pump/Gun Air Controls

- Produce precise, consistent, and repeatable texture finishes

### IMPROVED HANDLING AND FLEXIBILITY

#### Skip-Bond Material/Air Hose

- Both hoses are permanently bonded together for easy handling
- Oversized grip with no-tools hose connection

### MOISTURE BUILDUP ELIMINATED

#### Onboard Air Filtration

- Automatically filters air to keep your sprayer running at optimal performance

### EASY SETUP AND OPERATION

#### EvenFlow® Valve

- Smooth, even material flow with air regulators and pressure gauges

### CONSISTENT FINISH QUALITY

#### Relax-A-Valve (Carbon Steel Model Only)

- Eliminates the material blast and ensures a soft start with easy trigger pull

### TIME-SAVING PRODUCTION RATIOS

#### High-Output Piston Pump

- Submerged foot valve ensures the pump is preloaded with material
- Texture delivery rates to 3.0 gpm (11 lpm) at 1000 psi (69 bar)
- Available in both carbon steel and stainless steel

### MAINTENANCE-FREE DESIGN

#### Heavy-Duty Graco Air Motor

- Proven air motor delivers years of reliable, dependable operation

### EASY DRUM MOUNTING

#### Convenient Drum Mount Setup

- Save space in your truck or on the job by mounting directly to material containers
- Use in open or closed head drums (carbon steel units)



### PRESIDENT 10:1

The President 10:1 is the ideal solution when you need to pump from a drum. This proven sprayer is ideal for smooth to heavily aggregated materials containing silica sand, perlite, vermiculite, or polystyrene.

PRESIDENT 10:1	PART #	GPM (LPM)
President 10:1 Carbon Steel Complete*	225886	3.0 (11.4)
President 10:1 Carbon Steel Complete*	225877	3.0 (11.4)
President 10:1 SST Complete*	987429	3.0 (11.4)
President 10:1 SST Bare*	954088	3.0 (11.4)