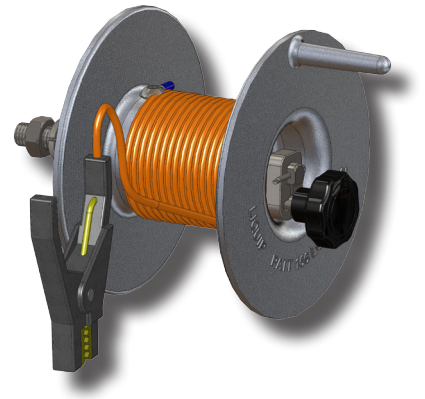


# LSR101 Lockable Static Reel

Static reels are used to bond two pieces of equipment to allow static charge to be safely equalised. Static reels are typically used when product is transferred from one tank to another e.g. when pumping between a tanker and storage tank or when fuelling aircraft.

The LSR101 has been developed to provide users with a safe and reliable static earthing reel that when locked won't inadvertently unwind while a vehicle is moving.

The new locking mechanism design is another step further in our constant drive to improve safety.



## Key Features

- Reliable continuity is ensured through the use of a carbon brush on a stainless steel shaft. Stainless steel components are used to ensure corrosion does not break continuity.
- Simple to use locking mechanism prevents the static reel from unwinding due to vibration.
- Comes supplied with 30m of orange cable for increased visibility at night.
- Manual operation as spring-rewind types have caused accidents when inadvertently released.

## Dismantle and Testing

- Test continuity regularly according to your company standards.
- Always remove the cable, brush spring and brush before withdrawing the shaft and fit the shaft first when reassembling.
- Install as per installation instructions.

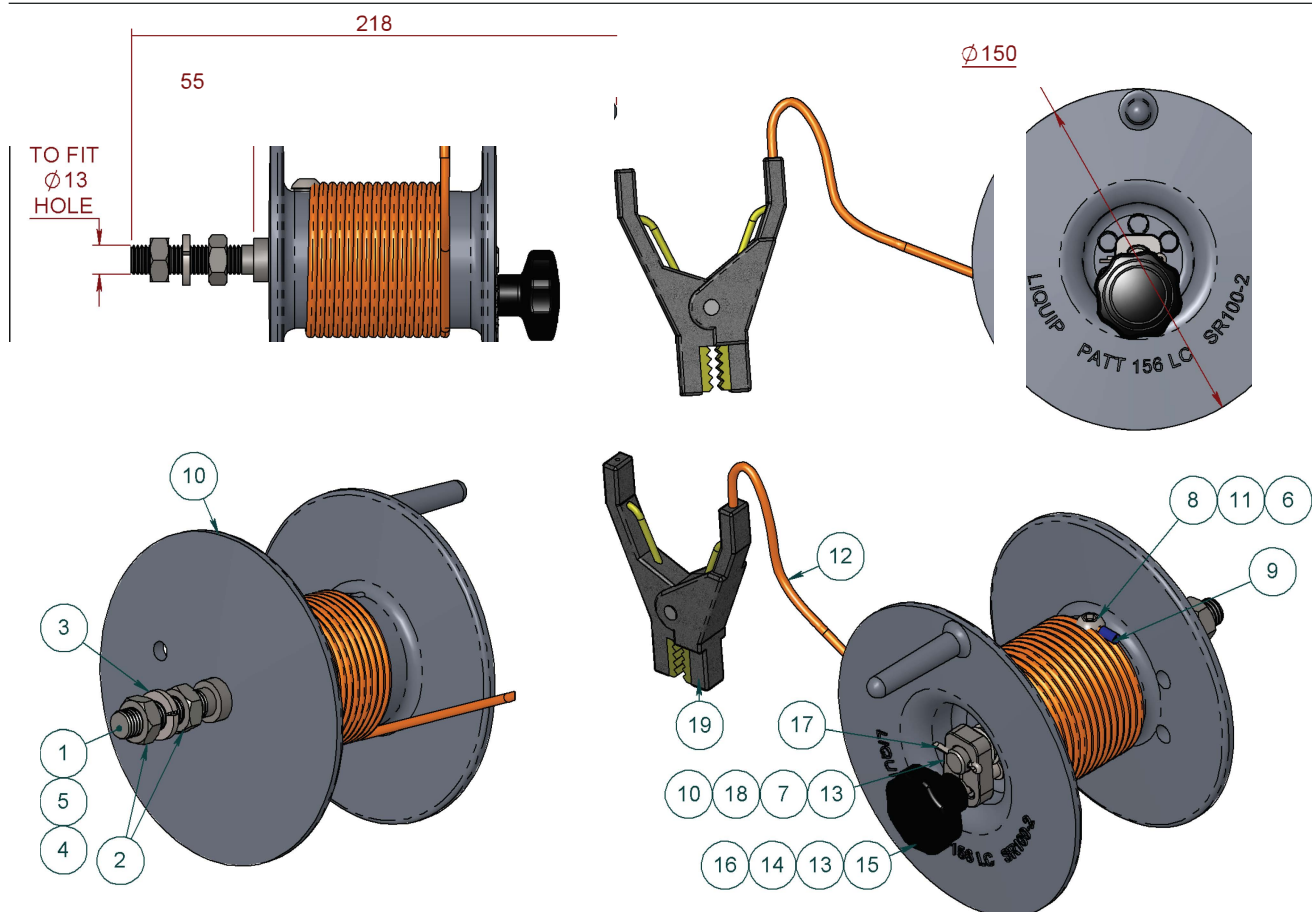
## Associated Equipment

- SR200 – Larger diameter reel for faster winding, comes with cable guide fitted.

## Specifications

Nominal reel resistance	5 ohms
Meets AS 2809:2	Maximum end-to-end resistance of 10 ohms.
Carbon brush	Runs in sealed section to eliminate dirt and corrosion.
Shaft	Has grease reservoir for all-of-life lubrication.
Materials	<ul style="list-style-type: none"> <li>• Body - Aluminium</li> <li>• Cable – Comes fitted with 30m of Yellow PVC coated galvanised wire</li> <li>• Shaft - Stainless steel</li> <li>• Brush - Carbon</li> <li>• Static clip – MIL Spec Aluminium</li> </ul>
Weight	2.0 kg

# LSR101 Locking Static Reel



ITEM	PART No	DESCRIPTION	LSR101	MATERIAL
	LSR100-3	SHAFT - MAIN		ST STEEL
2	0805	NUT - HALF	2	ST STEEL
3	0822	WASHER SPRING		ST STEEL
4	0159	O-RING		NITRILE
5	0223	O-RING		NITRILE
6	SR100-4	CARBON BRUSH		CARBON
7	0436	SPRING - SHAFT		ST STEEL
8	0040	CAPSCREW MET BUTT HD		STEEL
9	1409	EYE TERMINAL		Z/P STEEL
10	SR100-2	BODY - STATIC REEL		ALUMINIUM
11	0437	SPRING COMPRESSION		SPRING STEEL
12	9457	GROUNDING CABLE - ORANGE		WIRE ROPE
13	LSR100-1	PIN GUIDE		ST STEEL
14	LSR100-2	LOCKING PIN		ST STEEL
15	58078	KNOB		PLASTIC
16	0315	SPRING COMPRESSION		ST STEEL
17	0770	SPLIT PIN		ST STEEL
18	58080	SPRING (ROLL) PIN		Z/P STEEL
19	GTP-1101	MILITARY GROUND CLAMP		ALUMINIUM