

## D-LUX TIMER

Digital electronic timer



02/12

### GENERAL OPERATION

The D-LUX Timer is produced using SMT (Surface Mounting Technology), ensuring improved performance and consistency in our manufacturing process.

The unit offers true digital time cycle programming luxury.

The D-LUX Timer is designed to fit all solenoid valves with connection type DIN 43650 - A/ISO 4400

### SAFETY AND PROPER USAGE

To ensure safe and enduring performance of this product, you must comply strictly with the instructions enclosed herein. Non-compliance with instructions or improper handling of the product will void your warranty! Usage of this product in conditions not specified in this manual or in contrary to the instructions hereby provided is considered IMPROPER. The manufacturer will not be held liable for any damages resulting from improper use of the product.

---

### SAFETY & WARNING INSTRUCTIONS

#### ATTENTION

- Observe valid and generally accepted safety rules when planning, installing and using this product.
- Take proper measures to prevent unintentional operation of the product or damage to it.
- Do not attempt to disassemble this product or lines in the system while they are under pressure.
- Always depressurise the compressed air system before working on the system.

**It is important that personnel use safe working practices and observe all regulations and legal requirements for safety when operating this product. When handling, operating or carrying out maintenance on this product, personnel must employ safe engineering practices and observe all local health & safety requirements & regulations. International users refer to regulations that prevail within the country of installation. Most accidents, which occur during the operation and maintenance of machinery, are the result of failure to observe basic safety rules or precautions. An accident can often be avoided by recognising a situation that is potentially dangerous. Improper operation or maintenance of this product could be dangerous and result in an accident causing injury or death. The manufacturer cannot anticipate every possible circumstance, which may represent a potential hazard. The WARNINGS in this manual cover the most common potential hazards and are therefore not all-inclusive. If the user employs an operating procedure, an item of equipment or a method of working which is not specifically recommended by the manufacturer he must ensure that the product will not be damaged or made unsafe and that there is no risk to persons or property.**

**EXPLODED VIEW AND IDENTIFY ALL COMPONENTS DIAGRAM**



————— D-LUX timer



————— Flat gasket



— Screw

# INSTALLATION INSTRUCTIONS

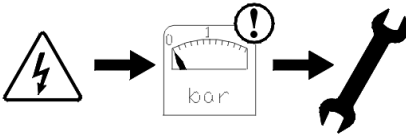
## IMPORTANT NOTICE

Before installing this product, make sure it complies with your request and that it suits your application!

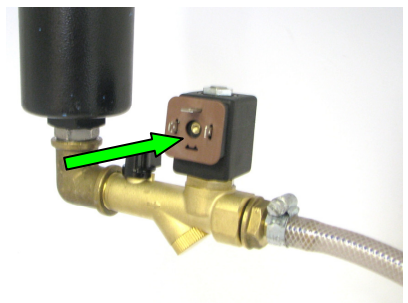
1. Unpack the unit and visually inspect for any transport damage incurred after leaving our factory.



2. Depressurise the system before installation or maintenance is carried out!

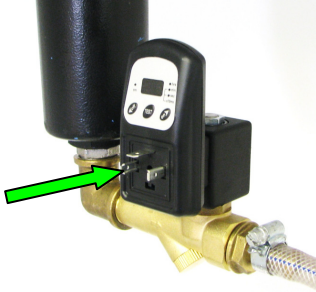


3. Remove the flat gasket from the D-LUX timer connection pins and place the flat gasket over the coil connection pins.

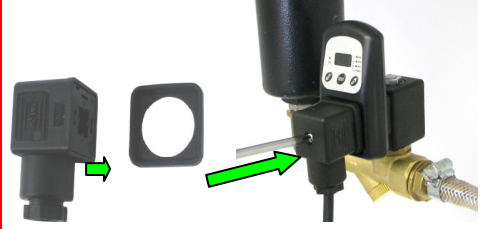


## INSTALLATION INSTRUCTIONS

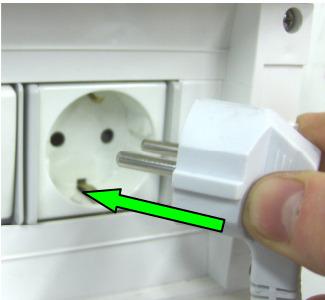
4. Mount the timer on to the coil as illustrated below, you can mount the timer up-right or upside-down.



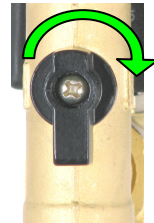
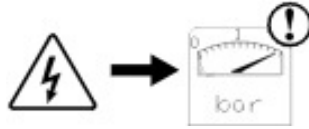
5. Place the connector gasket on the connector and plug the connector on to the timer as illustrated below and tighten the screw (max. 1Nm). Make sure both gaskets are secured properly to ensure IP65 rating.



6. After double checking that the power supply corresponds with the voltage specified on the coil and falls within the range specified on the back of the timer, you can switch the power supply ON.



7. Slowly restore normal system pressure. i.e. open the ballvalve.



8. Press the TEST button to check the valve function.



9. The drain is now at full system pressure and will periodically discharge any condensate it receives from your compressed air system fully automatic and continuous.

You can now alter the ON and OFF time if required.

The D-LUX timer will start with its pre-set time setting of 3 sec. ON and 30 min. OFF.

## INSTALLATION INSTRUCTIONS

### 10. Time setting options;

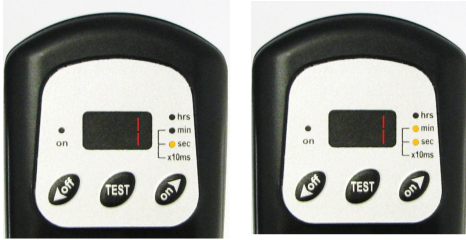
The ON and OFF time of the D- LUX timer can be programmed anywhere between 10ms and 99h.

The set time will be indicated by the LED display on the right side of the Digital display.



= 1 Hour

= 1 Minute



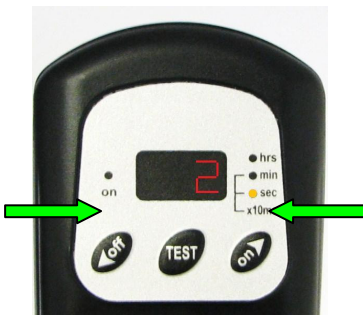
= 1 Second

= 10 Milliseconds

11. To change the ON time, simply press the right 'on/arrow up' button and 'on' will appear briefly on the display.



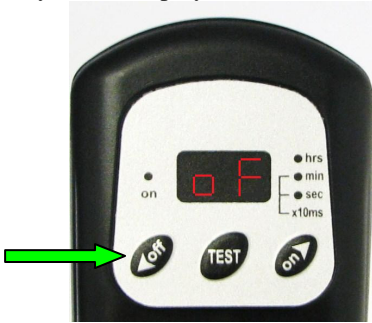
12. You can now press the left 'off/arrow down' button to decrease the time or the right 'on/arrow up' button to increase the time.



13. If the desired ON time is set, then simply don't press any buttons and after a few seconds the display will start flashing illustrating that the new time is being saved. Once the new time is saved, the unit will start operating with the new time setting.

## INSTALLATION INSTRUCTIONS

14. To change the OFF time simply press the left 'off/arrow down' button and 'off' will appear briefly on the display.



15. You can now press the left 'off/arrow down' button for decreasing the time or the right 'on/arrow up' button to increase the time.



16. If the desired OFF time is set, then simply don't press any buttons and after a few seconds the display will start flashing illustrating that the new time is being saved.

Once the new time is saved, the unit will start operating with the new time settings.

17. The unit is now fully programmed to your desired time settings and will work fully automatically.

18. Press the TEST button to check the valve function.



19. Your D-LUX timer is ready for operation!

## CHANGING THE TIMER FUNCTION

The D-LUX is able to perform the following functions:

- Function 'A' start with the ON time and then the OFF time, etc.
- Function 'C' start with the OFF time and then the ON time, etc.
- Function 'B' single shot, starts with the ON time and then switches OFF indefinite.
- Function 'D' single shot, starts with the OFF time and then switches ON indefinite.
- Function 'E' start with OFF time then ON time and then switches OFF indefinite.
- Function 'F' start with ON time then OFF time and then switches ON indefinite.

The D-LUX is factory set to the function 'A'. However, should you need a different function you can always change it.

To do so please follow these easy steps:

1. Disconnect the unit from the power supply.
2. Press and hold down the (TEST) button.
3. Connect the unit to the power supply.
4. Release the TEST button after 'A' appears on display if the unit is being programmed for the first time. If the function has already been changed then the last set function will appear on display (A/ B/ C/ D/ E or F).
5. Use (off/arrow down) and (on/arrow up) to select the function (A/ B/ C/ D/ E or F).
6. When the function is selected do not press anything and after a few seconds the unit will resume operation with the new function setting.
7. Change the pre-set ON and/or OFF times if required (see pages 6-7).

## RETURNING TO THE FACTORY SETTINGS

Factory settings of each timer: 3sec. ON time, 30min. OFF time, function 'A'.

No matter how you change the settings you can always reset all settings to factory settings.

To do so please follow these easy steps:

1. Disconnect the unit from the power supply.
2. Press and hold down (off/arrow down) and (TEST) buttons.
3. Connect the unit to the power supply.
4. Release the buttons after 'P' appears on the display.
5. Then 'A' appears on the display - do not press anything.
6. After a few seconds the unit will resume operation with factory settings.
7. Change the preset ON and/or OFF times if required (see pages 6-7).



## TECHNICAL SPECIFICATIONS



Interval Time (OFF time)	0,01sec. - 99 h. (note: check response time of your solenoid valve)
Discharge Time (ON time)	0,01sec. - 99 h. (note: check response time of your solenoid valve)
Supply voltage (range options)	110 – 240VAC/DC 50-60Hz ( $\pm 10\%$ ) 48 – 115VAC/DC 50-60Hz ( $\pm 10\%$ ) 10-48 VAC/DC 50-60Hz ( $\pm 10\%$ )
Current consumption	Max. 7mA
Case Material	ABS plastic FR grade
Connection	DIN 43650-A - ISO 4400
Indicators	Digital display

## CERTIFICATIONS

CE	Yes
cULus	Yes
RoHS	Yes
IP65	Yes



## DIMENSIONS (MM)

