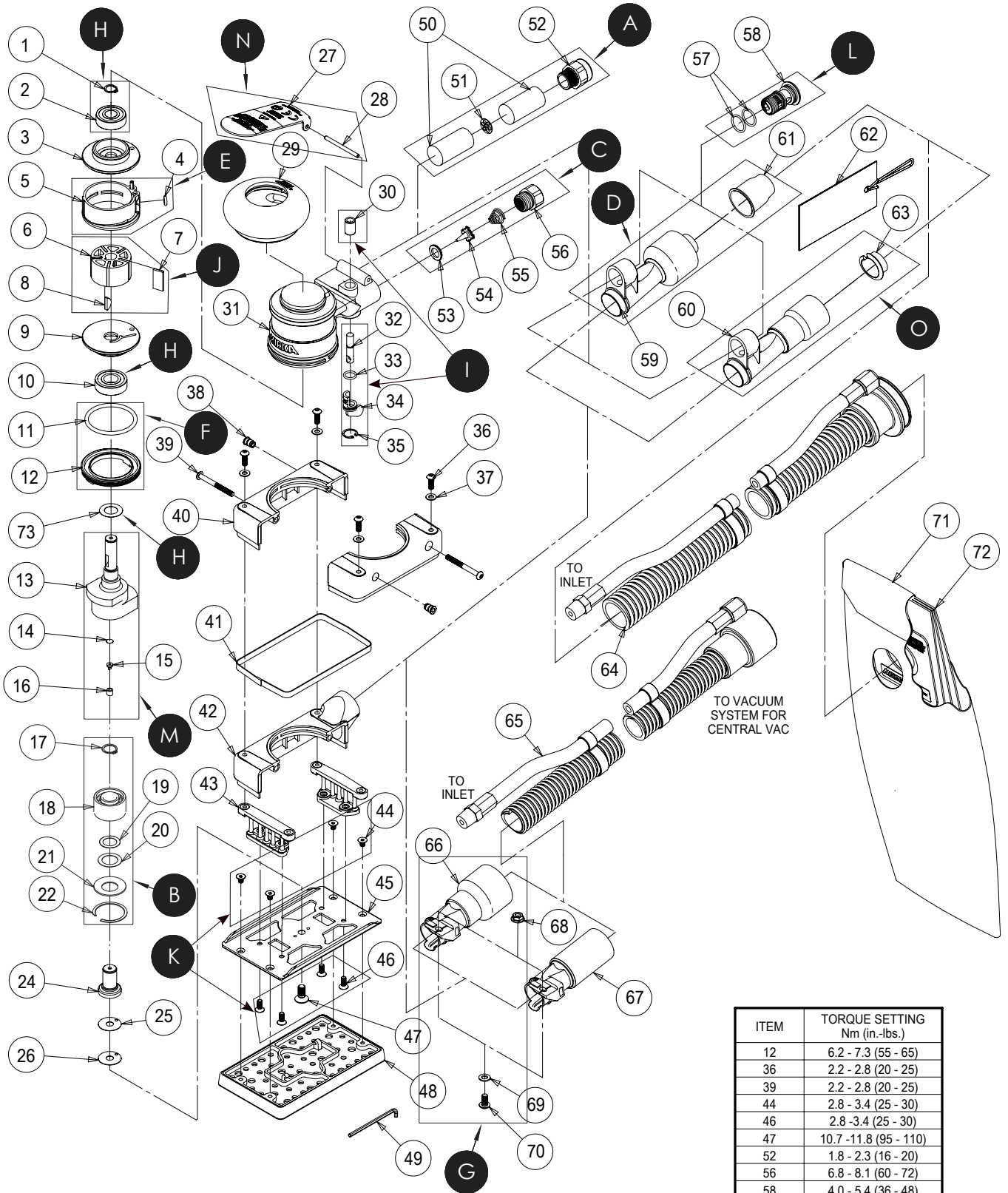


Exploded view of OS 353 - 81 x 133 mm

Updated 22.16.2021



ITEM	TORQUE SETTING Nm (in.-lbs.)
12	6.2 - 7.3 (55 - 65)
36	2.2 - 2.8 (20 - 25)
39	2.2 - 2.8 (20 - 25)
44	2.8 - 3.4 (25 - 30)
46	2.8 - 3.4 (25 - 30)
47	10.7 - 11.8 (95 - 110)
52	1.8 - 2.3 (16 - 20)
56	6.8 - 8.1 (60 - 72)
58	4.0 - 5.4 (36 - 48)
70	3.4 - 3.9 (30 - 35)

OS 353 - 81x133 mm Spare Part kits

Note! Repairs done by non-authorized repairer will breach the Mirka warranty.

Mirka Code	Item	Description	Kit	QTY	Part No
8993017211		Muffler kit 10 000 rpm			MPA0805
	50	Muffler	A	2	MPA0032
	51	Plate		1	MPA0038
	52	Muffler Housing		1	MPA0166
8993019711		Spindle Bearing kit			MPA0802
	17	Retaining Ring	B	1	MPA0090
	18	Double Row Bearing		1	MPA0938
	19	Dust Shield		1	MPA2542
	20	Spacer		1	MPA0016
	21	Washer		1	MPA0017
	22	Retaining Ring		1	MPA0018
8993018811		Air Inlet kit			MPA0798
	53	Valve Seat	C	1	MPA0009
	54	Valve		1	MPA0007
	55	Valve Spring		1	MPA0014
	56	1/4-18 Npt Inlet Bushing Assembly		1	MPA0013
8993011311		Swivel Fitting kit 28 mm DB			MPA0932
	59	Swivel Exhaust Assembly 28 mm (1 In.) Hose Supervac™ (Standard For DB)	D	1	MPA0410
	61	Hose Seal 28mm (1 In.)		1	MPA0778
8993009211		Cylinder And O-Ring kit			MPA0994
	4	O-Ring 5x2 mm	E	1	MPA0042
	5	Cylinder Assembly		1	MPA0005
8993007911		Lock Ring And O-Ring kit			MPA0993
	11	O-Ring 39.4x3.1 mm	F	1	MPA0045
	12	Lock Ring		1	MPA0001
8991600311		Swivel Fitting kit 28 mm CV			MPA3207
	66	Swivel Exhaust Supervac™ 28 mm (1 In.) CV	G	1	MPA0092
	68	Flanged Nut M5x0.8		1	MPA0048
	69	Washer M5		1	MPA0047
	70	Screw M5x10 Hex Socket		1	MPA0769
8993019811		Endplate Bearing kit			MPA0799
	1	Retaining Ring external	H	1	MPA0040
	2	Bearing 10x26x8 - 2 Shields		1	MPA0021
	10	Bearing 12x28x8 - 2 Shields		1	MPA0019
	73	Front Bearing Dust Shield		1	MPA2541

OS 353 - 81x133 mm Spare Part kits

Mirka Code	Item	Description	Kit	QTY	Part No
8993019011		Speed Valve kit			MPA0800
	30	Valve Sleeve		1	MPA0015
	32	Valve Stem Assembly	I	1	MPA0008
	33	O-Ring 9x1.5 mm		1	MPA0043
	34	Speed Control		1	MPB0014
	35	Retaining Ring internal		1	MPA0039
8993017711		Rotor, Vanes and Key kit			MPA0801
	6	Rotor	J	1	MPB0005
	7	Vane		5	MPA0010
	8	Woodruff Key 3x13 mm		1	MPA0041
8993015511		Screw kit			MPA1672
	44	Screw	K	4	MPA0766
	46	Screw		4	MPA0767
	47	Screw		1	MPA0078
8991600911		Retainer & O-Ring kit DB			MPA2697
	57	O-Ring 14x1.5	L	2	MPA0044
	58	Retainer DB		1	MPA0722
8991821311		Shaft Balancer kit			MPA2191
	13	Shaft Balancer 3 mm (1/8 In.) Orbit Airshield™	M	1	MPB0179
	14	Filter		1	MPA0122
	15	Check Valve		1	MPA0121
	16	Retainer		1	MPA0120
8991610711		Lever kit 3,0 mm Orbit			MPA1730
	27	Lever	N	1	MPA1697
	28	Pin		1	MPA0031
8993011411		Swivel Fitting kit 19 mm DB		OPT.	MPA0858
	60	Swivel Exhaust Assembly 19 mm (¾ In.) Hose Supervac™ (Optional For DB)	O	1	MPA0409
	63	Hose Seal 19mm (3/4 In.)		1	MPA0854

Separate spare parts on next page.

OS 353 - 81x133 mm Spare Parts

Mirka Code	Item	Description	Kit	QTY	Part No
	1	Retaining Ring external	H	1	MPA0040
	2	Bearing 10x26x8 - 2 Shields	H	1	MPA0021
8993009311	3	Rear Endplate		1	MPB0017
8993008211	4	O-Ring 5x2 mm	E	1	MPA0042
	5	Cylinder Assembly	E	1	MPA0005
	6	Rotor	J	1	MPB0005
	7	Vane	J	5	MPA0010
	8	Woodruff Key 3x13 mm	J	1	MPA0041
8993009411	9	Front Endplate		1	MPB0016
	10	Bearing 12x28x8 - 2 Shields	H	1	MPA0019
	11	O-Ring 39.4x3.1 mm	F	1	MPA0045
	12	Lock Ring	F	1	MPA0001
	13	Shaft Balancer 3 mm (1/8 In.) Orbit Airshield™	M	1	MPB0179
	14	Filter	M	1	MPA0122
	15	Check Valve	M	1	MPA0121
	16	Retainer	M	1	MPA0120
	17	Retaining Ring	B	1	MPA0090
	18	Double Row Bearing	B	1	MPA0938
	19	Dust Shield	B	1	MPA2542
	20	Spacer	B	1	MPA0016
	21	Washer	B	1	MPA0017
	22	Retaining Ring	B	1	MPA0018
8991802411	24	Spindle		1	MPA0113
8991601111	25	Spacer (0,2 mm thick)		OPT.	MPA0079
8991601011	26	Spacer (0,4 mm thick)		1	MPA0080
	27	Lever	N	1	MPA1697
	28	Pin	N	1	MPA0031
8993013811	29	Grip 65 mm (2 1/2 In.)		OPT.	MPA0288
8993016011	29	Grip 70 mm (2 3/4 In.)		OPT.	MPA0289
8993013511	29	Grip 75 mm (3 In.) - (Standard)		1	MPA0290
	30	Valve Sleeve	I	1	MPA0015
8993006811	31	Housing		1	MPA0227
	32	Valve Stem Assembly	I	1	MPA0008
	33	O-Ring 9x1.5 mm	I	1	MPA0043
	34	Speed Control	I	1	MPB0014
	35	Retaining Ring internal	I	1	MPA0039
8991800911	36	Screw M4x12		4	MPA0768
8991800411	37	Washer M4		4	MPA0076
8991800511	38	Threaded Insert		2	MPA0071
8991800611	39	Screw M4x40		2	MPA0770
8991804011	40	Shroud (CV/DB: Right hand) (NV: Left- & Right hand)		2	MPD0004
8991800311	41	Shroud Seal		1	MPA0444
8991800811	42	Shroud (CV/DB: Left hand)		1	MPD0005
8991608911	43	Pad Support Assembly		2	MPC0089
	44	Screw	K	4	MPA0766

OS 353 - 81x133 mm Spare Parts

Mirka Code	Item	Description	Kit	QTY	Part No
8991800211	45	Pad Backing		1	MPC0115
	46	Screw	K	4	MPA0767
	47	Screw	K	1	MPA0078
8295350111	48	Backing Pad 81x133mm Grip 54H		1	
8991608011	49	Hex Wrench 2.5 mm (Supplied with each Tool)		1	MPA0864
	50	Muffler	A	2	MPA0032
	51	Plate	A	1	MPA0038
	52	Muffler Housing	A	1	MPA0166
	53	Valve Seat	C	1	MPA0009
	54	Valve	C	1	MPA0007
	55	Valve Spring	C	1	MPA0014
	56	Inlet Bushing Assembly 1/4-18 Npt	C	1	MPA0013
	57	O-Ring 14x1.5	L	2	MPA0044
	58	Retainer DB	L	1	MPA0722
	59	Swivel Exhaust Assembly 28 mm (1 In.) Hose Supervac™ (Standard for DB)	D	1	MPA0410
	60	Swivel Exhaust Assembly 19 mm (¾ In.) Hose Supervac™ (Optional for DB)	O	1	MPA0409
	61	Hose Seal 28mm (1 In.)	D	1	MPA0778
	62	Hose Seal Tag 19mm (3/4 In.)		OPT.	MPA0856
	62	Hose Seal Tag 28mm (1 In.)		1	MPA0931
	63	Hose Seal 19mm (3/4 In.)	O	1	MPA0854
8993006711	64	ø 28 mm (1 in.) vac hose to ø 28 mm (1 in.) double bag fitting and airline assy. (standard for DB) incl.: MPA0034 ø 28 mm (1 in) x 1.8 m (6 ft) vacuum hose, MPB0123 ø 28 mm (1 in) hose to double bag vacuum fitting, MPA0033 ø 6.3 mm (¼ in) x 1.8 m (6 ft) airline with fittings, MPA0027 bungee for ø 6.3 mm (¼ in.) airline & ø 28 mm (1 in.) vacuum hose (5)		1	MPA0412
8993041111	64	ø 19 mm (¾ in.) vac hose to ø 19 mm (¾ in.) double bag fitting and airline assembly (optional for DB) incl.: MPA0200 ø 19 mm (¾ in) x 1.5 m (5 ft) vacuum hose, MPB0133 ø 19 mm (¾ in) hose to double bag vacuum fitting, MPA0302 ø 6.3 mm (¼ in) x 1.5 m (5 ft) airline with fittings, MPA0301 bungee for ø 6.3 mm (¼ in) airline & ø 19 mm (¾ in) vacuum hose (5)		OPT.	MPA0411
8993306711	65	ø 19 mm (¾ in.) vac hose to ø 19 mm (¾ in.) x ø 28 mm (1 in.) hose adapter coupling and airline assembly includes: MPA0200 ø 19 mm (¾ in.) x 1.5 m (5 ft.) (¾ in.) hose x 28 mm (1 in.) hose adapter, MPA0302 ø 6.3 mm (¼ in.) x 1.5 m (5 ft.) airline with fittings, vacuum hose, MPB0088 19 mm MPA0301 bungee for ø 6.3 mm (¼ in.) airline & ø 19 mm (¾ in.) vacuum hose (5)		OPT.	MPA0300
	66	Swivel Exhaust Supervac™ 28 mm (1 In.) CV	G	1	MPA0092
8991600211	67	Swivel Exhaust Assembly Supervac™ 19 mm (¾ In.) CV		OPT.	MPA1239
	68	Flanged Nut M5 x 0.8	G	1	MPA0048
	69	Washer M5	G	1	MPA0047
	70	Screw M5x10 Hex Socket	G	1	MPA0769
8993206011	71	Dustbag Nylon		1	MPA0658
8993206511	72	Dustbag Paper		1	MPA0465
	73	Front Bearing Dust Shield	H	1	MPA2541