

GENERAL

Please read this Quick Start Guide carefully before operating your compressor. A good understanding of your equipment will make you operate it in a safe way. Correct use and maintenance will greatly prolong the life of your compressor.



This Quick Start Guide does not replace the Instruction Manual delivered with the machine. Please refer to the Instruction Manual for complete safety, operation and maintenance guidelines. Scan the QR code.



The compressors are silenced, single stage, oil-injected screw compressors driven by a 3 cylinder in-line liquid-cooled diesel engine.

TECHNICAL SPECIFICATIONS

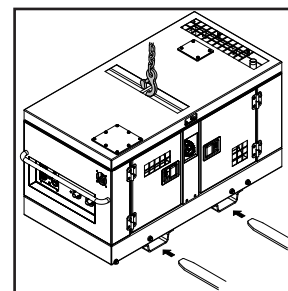
		U75	U110	U110 PACE
Max. working pressure	bar	7		5 - 10.5
	psi	100		70 - 150
Max. Flow	m ³ /min	2.1	2.8	1.3 - 2.8
Capacity of fuel tank	l	30		
Dimensions (LxWxH)	mm	1580 x 740 x 850		
Mass (max.)	Kg	500*		

*Refer to data plate for exact value

LIFTING

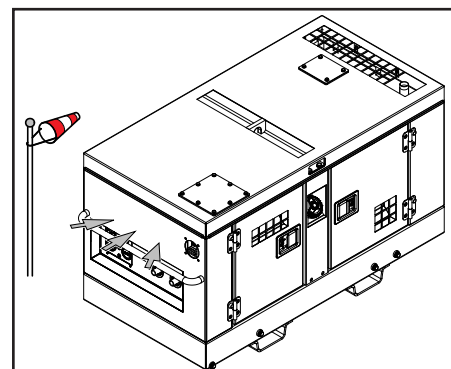


Keep lifting acceleration within safe limits. Helicopter lifting is not allowed. Never leave a load hanging on a hoist.



INSTALLATION

1. Close the compressor outlet valve before connecting or disconnecting a hose.
2. Locate the rear-end upwind, away from contaminated wind-streams and walls.
3. Avoid recirculation of warmed-up cooling air. This causes overheating and power decrease.



SAFETY



The compressor is equipped with an emergency button. Use it only in case of an emergency, not for stopping the compressor.



Frequently stopping the compressor using the emergency button can harm your compressor.

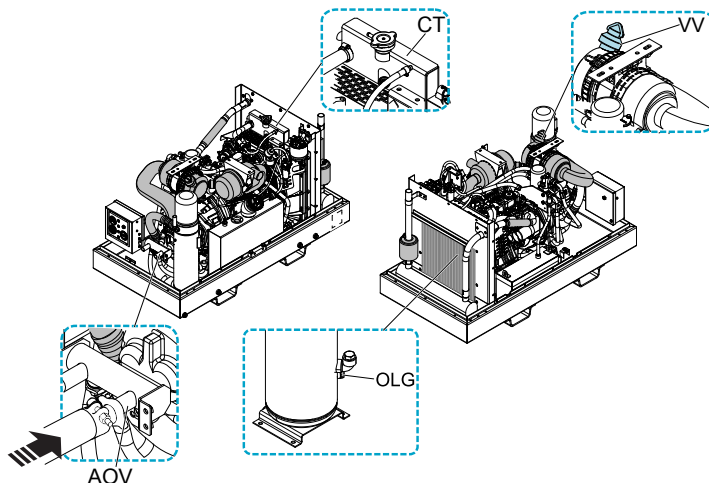


INSPECTION BEFORE USE & DAILY MAINTENANCE

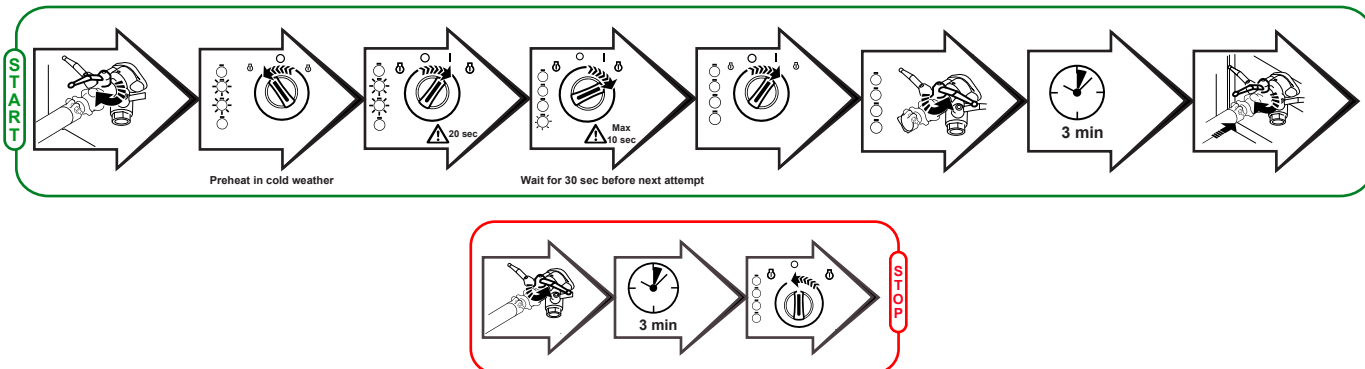


Check that inlet and outlet gratings are not obstructed (wall, cardboard, ice, snow, ...)

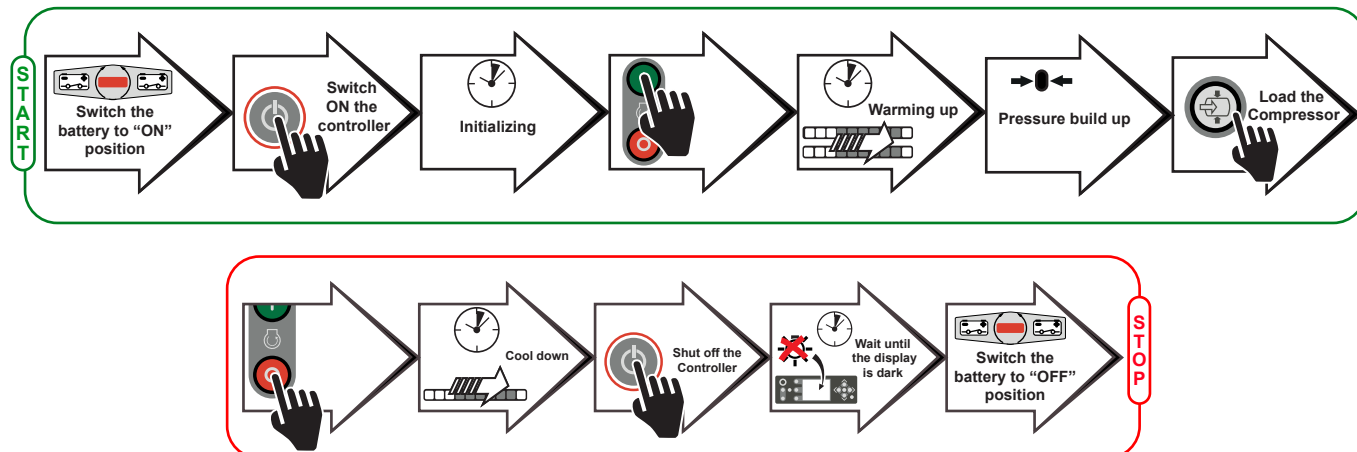
1. Check engine oil level.
2. Check compressor oil level (OLG).
3. Check coolant level at the expansion tank (CT).
4. Attach the air line to the closed air outlet valve (AOV).
5. Press the vacuator valve (VV) of the air filter to remove dust.
6. Check for clogged air filter.



START & STOP for U130 - U190



START & STOP for U110 PACE



24 h

