



**First Aid**

# **Room & Rescue**



Providing appropriate administering and rescue equipment such as immobilisation, resuscitation and defibrillation can reduce the risk of permanent injury and/or fatality. A first aid room is also recommended for low risk workplaces with 200 workers or more and high risk workplaces with 100 workers or more.

# 3 FIRST AID ROOM AND RESCUE ESSENTIALS



LEFT TO RIGHT: ADJUSTABLE CERVICAL COLLAR page 51  
SHARPS CONTAINER page 58 DEFIBRILLATOR page 52

## Adjustable Cervical Collars

▼ 871293



- ▶ Provides immobilisation in cases of suspected neck or spinal injuries
- ▶ Adjustable cervical collar has four locking sizes
- ▶ Foam collar is easily secured with velcro tab

### STANDARD PACKAGE: 1

PART NO.	DESCRIPTION
871293	Adjustable Cervical Collar
877791	Foam Cervical Collar

## Oxygen Resuscitation Equipment



- ▶ Designed as a first response first aid kit for professionally trained medical person
- ▶ Used before the patient can reach hospital



Complies to AS21488-1995 and is a TGA listed medical device

### STANDARD PACKAGE: 1

PART NO.	DESCRIPTION
871315	Oxygen Resuscitation Equipment

### KIT CONTAINS

1 x Robust Carry Bag	1 x Bodok Seal
1 x Regulator	1 x Adult Therapy Mask & Tubing
1 x Manual Resuscitator	1 x Child Therapy Mask & Tubing
1 x Mask - Adult Resus.	1 x Mask - Child Resus.

## Resuscitation Mask



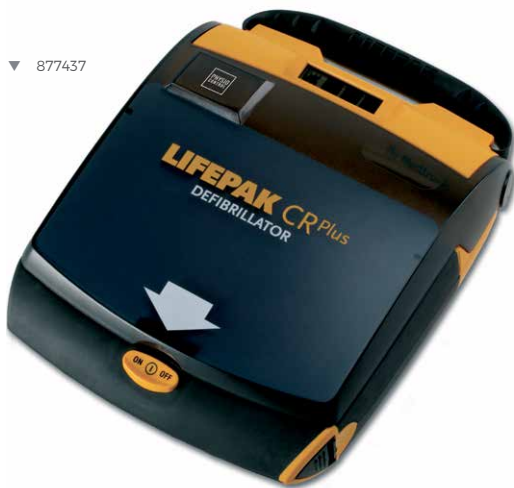
- ▶ Silicone mask with storage case
- ▶ Features a see through face piece
- ▶ Replaceable one-way valve which directs expired air away from operator

### STANDARD PACKAGE: 1

PART NO.	DESCRIPTION
858280	Mask with Valve & Carry Case
858281	Replacement Valve



## LIFEPAK® Defibrillators



### LIFEPAK® EXPRESS SEMI AUTOMATIC DEFIBRILLATOR

- ▶ Industry-leading 360 joules capability
- ▶ Step-by-step ClearVoice™ prompts
- ▶ Same technology used by medical professionals
- ▶ Flashing shock button
- ▶ Highly visible readiness indicator
- ▶ Lightweight and compact

The LIFEPAK EXPRESS semi-automatic defibrillator from Physio-Control is designed to be used by the first person to respond to a SCA victim – easily, safely and effectively.

### LIFEPAK® CR PLUS DEFIBRILLATOR

- ▶ Conducts weekly and monthly checks
- ▶ Fully automatic once defibrillator pads are attached
- ▶ Visible Readiness Display
- ▶ Industry leading 8 year warranty on the AED
- ▶ The capability to escalate to 360joules when needed
- ▶ IrDA Port allows for easy transfers of automatically recorded events

Featuring the same advanced technology trusted by emergency medical professionals—yet simple to use—the LIFEPAK CR Plus automated external defibrillator (AED) is designed specifically for the first person to respond to a victim of sudden cardiac arrest (SCA).

### STANDARD PACKAGE: 1



PART NO.	DESCRIPTION
877436	Lifepak Express Semi Automatic Defibrillator
877437	Lifepak CR Plus Automatic Defibrillator

### LIFEPAK® EXPRESS PACKAGE CONTAINS

1 X Semi-Automatic Defibrillator	1 X Operating Instructions
1 X Set Of Adult Electrodes	1 X Orientation DVD
1 X Charge-Pak™	5 Year Warranty
1 X Protocol Card Installed In Device	

### LIFEPAK® CR PLUS PACKAGE CONTAINS

1 X Automatic Defibrillator	1 X Orientation DVD
1 X Set Of Adult Electrodes	1 X Carry Case
1 X Charge-Pak™	1 X First Responder Kit
1 X Protocol Card Installed In Device	8 Year Warranty
1 X Operating Instructions	



# LIFEPAK®

## Replacement Packs and Accessories



▼ 877446



### ADULT REPLACEMENT KIT

Replacement kit for charge-pak battery charger. Includes 1 set electrodes and 1 battery charger, replacement instructions, and discharger for safe disposal of used charge-pak charger.

▼ 877447



### INFANT/CHILD REDUCED ENERGY DEFIB ELECTRODES

This package contains one pair of child/infant defibrillation pads for use with the Lifeline AED. These pads are suitable for use on patients less than 8 years of age.

▼ 877448



### FIRST RESPONDER KIT

Includes:

- ▶ 2x sets of disposable vinyl gloves
- ▶ 1x reusable mouth barrier mask with valve and filter
- ▶ 1x disposable razor
- ▶ 1x disposable anti-microbial wipe
- ▶ 1x pair of trauma scissors

### CARRY CASE

Complete soft shell carrying case.

### STANDARD PACKAGE: 1



PART NO.	DESCRIPTION
877446	Adult Replacement Kit (1 set electrodes & 1 charging unit)
877447	Infant/Child Reduced Energy Electrodes
877448	First Responder Kit
877593	Soft Shell Carry Case
877594	Wall Bracket

▼ 877593





# Lifeline AED Defibrillators



▼ 877146



### PADS AT THE READY

The electrode pads are tucked into a back pocket ready to apply.



### TEXT, LIGHTS AND VOICE GUIDES

A calm voice guides the responder step by step while a text display with lights shows the progress.



### BIG BUTTONS

The "Power On" and "Shock" buttons are oversized and brightly lit so even the most nervous fingers will hit their mark.

- ▶ Lightweight, durable and easy to use
- ▶ Clear step-by-step voice prompts
- ▶ Flashing light indicators to aid rescuer during use
- ▶ Daily, weekly and monthly automatic self tests
- ▶ NB: Defibrillators are GST Free.

## LIFELINE SEMI AUTOMATIC AED

The original award-winning Defibtech AED, the Lifeline Semi-Automatic is easy to use with only 2 buttons. Available in 2 battery options. 5 year battery (125 shocks) and 7 year battery (300 shocks) also comes with resus kit, pair of adult electrode pads, quick use card and user manual.

## LIFELINE FULLY AUTOMATED AED

Lifeline Fully Automatic Defibtech AED, is even more simple to use with only 1 button and the only 7 year battery available in the world. It also comes standard with an 8 year warranty, resus kit, pair of adult electrode pads, quick use card and user manual.

## LIFELINE VIEW

The Lifeline View shows you what to do in an emergency in full colour, high definition video. With award-winning design, easy maintenance, an 8 year warranty and Defibtech commitment to innovation, this AED has changed the face of on-site safety. Comes with a 4 year battery life (125 shocks), pair of adult electrode pads, resus kit and user manual.

## STANDARD PACKAGE: 1



PART NO.	DESCRIPTION
877146	Semi Defibrillator with 5 Year Battery
863175	Semi Defibrillator with 7 Year Battery
873577	Auto Defibrillator with 7 Year Battery
873578	View Semi Defibrillator with 4 Year Battery

▼ 873577



▼ 873578



# Lifeline Replacement Pads and Accessories

▼ 863174



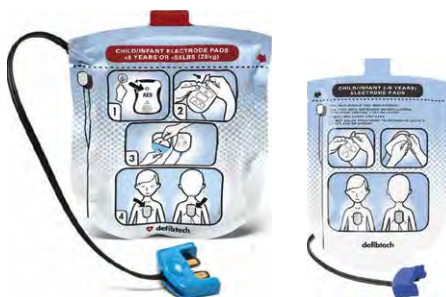
## ADULT PADS

The package contains one pair of adult defibrillation pads for use with the Lifeline AED. These pads are for adult use only (8 years or older).

## PEDIATRIC PADS

This package contains one pair of child/infant defibrillation pads for use with the Lifeline AED. These pads are suitable for use on patients less than 8 years of age.

▼ 877595



## WALL MOUNT BRACKET

This black metal bracket mounts to the wall to allow easy access to your Lifeline AED. Dimensions: 22.9cm x 22.9cm x 15.2cm. Compatible with Semi & Auto.

## WALL MOUNT CASE - ALARMED

This high visibility cabinet can be mounted on the wall to store your AED and protect it from damage or theft. A loud alarm will sound whenever the cabinet is opened. Dimensions: 45.7cm x 45.7cm x 10.2cm, compatible with Semi & Auto.

▼ 876066



## STANDARD PACKAGE: 1



PART NO.	DESCRIPTION
863174	Replacement Pad - Adults (Semi & Auto)
877595	Replacement Pads - Pediatric (Semi & Auto)
875448	Replacement Pads - Adult (view)
875449	Replacement Pads - Pediatric (View)
863173	Replacement Battery 7 Year
877596	Replacement Battery 5 Year
877211	Replacement Battery 4 Year
876066	Wall Bracket
869619	Wall Mounted Case (Alarmed)

▼ 869619







## Mobile Privacy Screen

▼ 877224



- ▶ Features a stainless steel tri-fold frame with outrigger wheels
- ▶ Easy to clean nylon curtains
- ▶ Perfect for first aid rooms

**DIMENSIONS PER PANEL: 900 x 1800mm (W x H)**

**DIMENSIONS OPEN: 2700 x 1800mm (W x H)**

**STANDARD PACKAGE: 1**



PART NO.	DESCRIPTION
877224	Mobile Privacy Screen

## Dressing Trolleys

▼ 870654

▼ 869663



- ▶ Stainless steel
- ▶ Easy to clean between patients
- ▶ Two decks with guard rails on 3 sides

**STANDARD PACKAGE: 1**



PART NO.	DESCRIPTION	DIMENSIONS (W X D X H)
869663	Dressing Trolley No Draw	750 x 750 x 450mm
870654	Dressing Trolley w/ Draw	550 x 450 x 820mm

## Examination Magnifying Lamp

▼ 868405



- ▶ Counter balanced arm for easy placement
- ▶ White powder coated finish
- ▶ Choice of mounting options
- ▶ Replacement tubes available

**STANDARD PACKAGE: 1**



PART NO.	DESCRIPTION
868405	Examination Magnifying Lamp
87562	Magnifying Lamp Wall Bracket
877696	Mobile Lamp Base - 5 Wheels
858210	Magnifying Lamp Replacement Tube
869684	Magnifying Lamp Desk Clamp Bracket



# Examination Couch and Steps



## Examination Couch:

- ▶ Safe working load 175kg
- ▶ Adjustable headrest
- ▶ Flat packed easy to assemble

## Step-Up Stools:

- ▶ Robust steel frame
- ▶ Non-slip treads

### STANDARD PACKAGE: 1

PART NO.	DESCRIPTION	DIMENSION (L X W X H)
854127	Examination Couch - Black	1820 x 610 x 769mm
875239	Examination Couch - Grey	1820 x 610 x 769mm
854128	Step Up Stool - Single	510 x 280 x 205mm
854129	Step Up Stool - Double	360 x 560 x 470mm

# AlcoSense Precision+ Breathalyser



Complies with Australian Standard AS3547 Certified

- ▶ Law enforcement grade
- ▶ 4-digit reading
- ▶ Ideal for professional, workplace safety, medical and industrial use

**INDICATION OF B.A.C:** 0.000 to 0.5000% B.A.C

**ACCURACY:** +/- 0.005% B.A.C

**WARNING UP:** Below 3 Seconds

**RESPONSE TIME:** 3 - 5 Seconds

**CALIBRATION:** 6 Months

**MOUTH PIECE:** Replacements Available

**SENSOR:** Electrochemical Fuel Cell

**CONTINUOUS USE:**

Over 200 time without battery recharge

**POWER SUPPLY:**

Four 1.5V "AAA" Alkaline batteries not included

**WEIGHT:** 150g (Including batteries)

**DIMENSIONS:** 55 x 140 x 30mm

**REMARK:** Auto power off, Battery low indicator

**STANDARD PACKAGE: 1**

PART NO.	DESCRIPTION
871106	AlcoSense Precision Breathalyser
871108	AlcoSense Precision Mouthpieces Pack Of 100



# SHARPS DISPOSAL

▼ 853122



▼ 856608



▼ 853124 or 853125



▼ 853127



▼ 850773



Complies with Australian Standard AS4031/92 Approved

- ▶ Safely dispose of sharps, robust & practical to use
- ▶ Quick and secure with tamper resistant and lock design

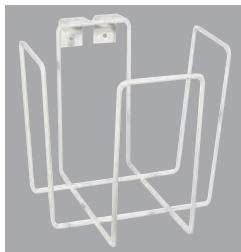
## STANDARD PACKAGE: 1



PART NO.	DESCRIPTION	SIZE
853122	Sharps Mini Container	100mm
856608	Sharps Rectangle Container	1.4 Litre
853124	Sharps Square Container	2 Litre
853125	Sharps Square Container	4.75 Litre
853127	Sharps Container	8 Litre
850773	Clinical Waste Bin	20 Litre

## Sharps Containers Accessories

▼ 853129



- ▶ Metal safe made of heavy duty steel casing, supplied with wall fixing and 2L container included
- ▶ Tamper resistant and lock design
- ▶ Sharps bracket - wall and trolley mountable metal construction

## STANDARD PACKAGE: 1



PART NO.	DESCRIPTION
853129	Bracket For 4.5L Container
853130	Metal Safe For 2L Container

\*Containers not included

▼ 853130



# Sharps Clean Up Kit



- ▶ Collect and dispose of sharps easily and safely
- ▶ Ideal for syringe disposal

**DIMENSIONS:** 220 x 145 x 55mm (W x H x D)

**STANDARD PACKAGE:** 1



PART NO.	DESCRIPTION
856593	Sharps Clean Up Kit

**KIT CONTAINS**

1 x Antiseptic - 30ml	1 x Sharps Container - 250ml
1 x Syringe Picker	1 x Plastic Strips (Pk 10)
1 x Gloves - Nitrile	1 x Plastic Bag - Resealable
1 x Gauze Swabs 7.5cm (Pk 5)	1 x Directions For Use

# Biohazard Waste Bags

▼ 854015

- ▶ Identify infectious waste and segregate biohazardous material
- ▶ Choose from self seal or heavy duty bags



PART NO.	DESCRIPTION	DIMENSIONS (WXH)	PACK QTY
854015	Self-Seal Biohazard Bag	190 x 280mm	100
854016	Heavy Duty Biohazard Bag	430 x 660mm	25
854017	Heavy Duty Biohazard Bag	450 x 750mm	10

# Syringe Picker

- ▶ Easy and effective way of picking up syringes
- ▶ 15cm long
- ▶ Ensure pick-up occurs at the cross member of syringe



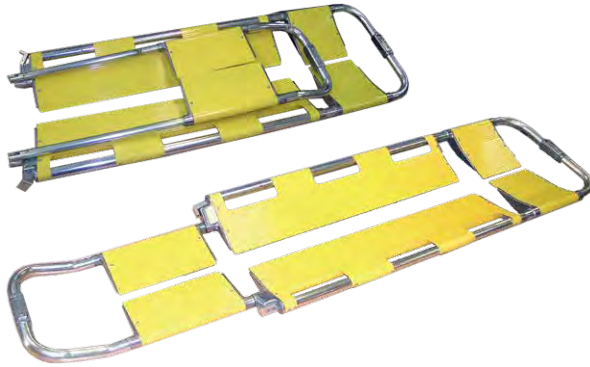
**STANDARD PACKAGE:** 1

PART NO.	DESCRIPTION
853131	Syringe Picker





## Scoop Stretcher



- ▶ Portable stretcher constructed of aluminium
- ▶ Designed to immobilise casualty minimising further trauma.
- ▶ Hinged at both ends and includes restraints.

**DIMENSIONS:** 1640 x 430 x 80mm (L x W x H)

**WEIGHT:** 9kg

**LOAD CAPACITY:** 150kg

**STANDARD PACKAGE:** 1

PART NO.	DESCRIPTION
871354	Scoop Stretcher

## Flat Spine Board

▼ 871355



- ▶ Tough, durable, lightweight and capable of keeping a body afloat
- ▶ X-Ray translucent
- ▶ Multiple handholds allow for ease of lifting and manoeuvring
- ▶ Use in cases of trauma where there is a possibility of spinal injury

**DIMENSIONS:** 1640 x 430 x 80mm (L x W x H)

**WEIGHT:** 7.5kg

**LOAD CAPACITY:** 150kg

**STANDARD PACKAGE:** 1

PART NO.	DESCRIPTION
871355	Flat Spine Board
873188	Nylon Stretcher Restraints 5cm x 2m

## Basket Stretcher

▼ 873188



- ▶ Light and portable
- ▶ Splits into two sections for compact storage
- ▶ A spine board, backboard or scoop stretcher should be used to aid patient lifting in and out of the Basket Stretcher.

**DIMENSIONS:** 2170 x 430 x 90mm (L x W x H)

**WEIGHT:** 20kg

**LOAD CAPACITY:** 150kg

**STANDARD PACKAGE:** 1

PART NO.	DESCRIPTION
871357	Basket Stretcher
873188	Nylon Stretcher Restraints 5cm x 2m



# Back Board

▼ 871356



- ▶ Tough, durable and lightweight the Backboard offers a buoyant solution for water rescues
- ▶ Compatible with basket stretchers
- ▶ Multiple handholds allow for ease of lifting and manoeuvring

**DIMENSIONS:** 1750 x 450 x 50mm (L x W x H)

**WEIGHT:** 7.5kg

**LOAD CAPACITY:** 150kg

**STANDARD PACKAGE:** 1



PART NO.	DESCRIPTION
871356	Pro Back Board
873188	Nylon Stretcher Restraints 5cm x 2m

# Lightweight Pole Stretcher

- ▶ Ideal basic emergency first aid stretcher
- ▶ Sturdy lightweight aluminium folding pole construction

**LENGTH, OPEN:** 2050mm

**LENGTH, FOLDED:** 1020mm

**WIDTH, OPEN:** 570mm

**WIDTH, FOLDED:** 180mm

**HEIGHT, OPEN:** 180mm

**HEIGHT, FOLDED:** 90mm

**WEIGHT:** 12kg

**LOAD CAPACITY:** 150kg

**STANDARD PACKAGE:** 1



PART NO.	DESCRIPTION
854133	Lightweight Pole Stretcher

