

Instructions

RACX HandTite™ Guard



Model 246215, Series A, 7/8 in. Guard

4050 psi (280 bar) Maximum Working Pressure

Model 246437, Series A, 11/16 in. Guard

4050 psi (280 bar) Maximum Working Pressure

309640A

- Patented aerodynamic design virtually eliminates paint buildup.
- Hand tighten on gun—no tools required.
- Fits all Graco airless spray guns.
- Use with RACX series SwitchTips only.
- Graco RACX SwitchTip sold separately.

⚠ WARNING

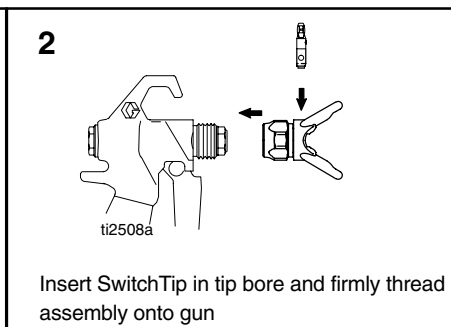
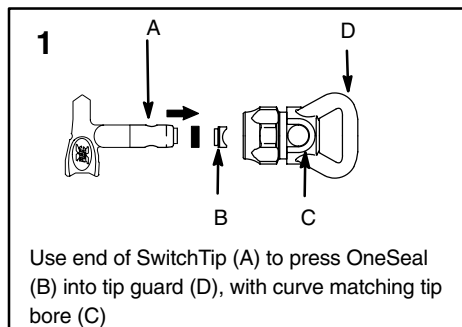
To reduce the risk of fluid injection or splashing in the eyes or on the skin, relieve air and fluid pressure in the system before installing, cleaning or changing tips. See **Pressure Relief Procedure** in gun or sprayer manual.

- **Keep clear of spray tip.** High-pressure spray or leaks can inject fluid into the body, resulting in serious injury which may require amputation. Never spray without a tip guard (D).
- Do not exceed 4050 psi (280 bar, 28 MPa) maximum working pressure.

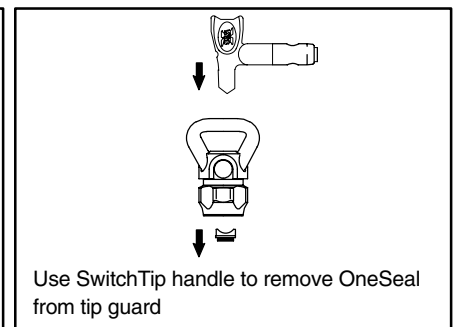
Failure to install or use the RAC™ tip guard assembly correctly may result in an undirected spray of fluid into the eyes or on the skin of the operator. Be sure you:

- Fully insert SwitchTip (A) into tip bore (C) in guard
- Do not trigger gun with SwitchTip handle between **Spray** and **Clear** positions
- Replace OneSeal™ when replacing worn SwitchTip

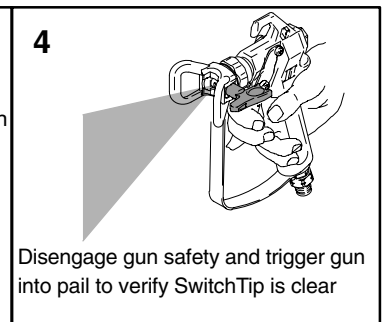
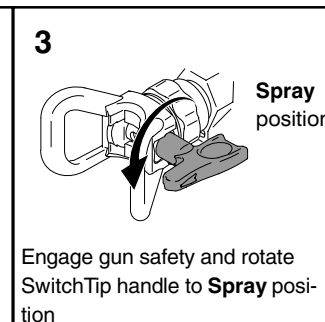
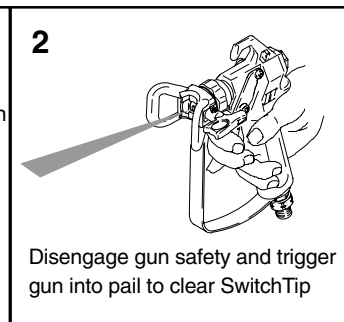
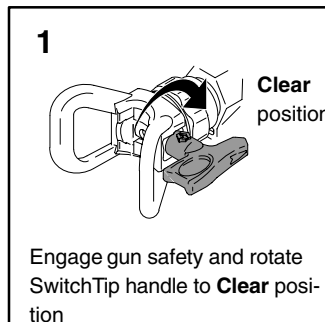
Installing



Disassembling



Clearing a Clogged SwitchTip



Note: If SwitchTip is still clogged, follow **Pressure Relief Procedure** in gun or sprayer manual, and remove SwitchTip for cleaning.



Graco Phone Number

TO PLACE AN ORDER, contact your Graco distributor, or call this number to identify the distributor closest to you: **1-800-690-2894 Toll Free**

GRACO INC. P.O. BOX 1441 MINNEAPOLIS, MN 55440-1441

©COPYRIGHT 2002, GRACO INC.
Graco Inc. is registered to I.S. EN ISO 9001

Printed in USA 309641 October 2002