

FinishPro™ HVLP 7.0/9.0/9.5

3A4967E

EN

For professional use only. For portable spray applications of fine finish coatings. Not approved for use in explosive atmospheres or hazardous locations.

FinishPro HVLP 7.0/9.0 Standard
FinishPro HVLP 7.0/9.0/9.5 ProContractor
FinishPro HVLP 9.5 ProComp
See page 3 for additional model information

10 psi (0.07 MPa, 0.7 bar) Maximum Working Pressure
ProComp Models: 50 psi (0.35MPa, 3.5 bar) Maximum Fluid Working Pressure



Important Safety Instructions

Read all warnings and instructions in this manual and in related manuals. Be familiar with the controls and the proper usage of the equipment. Save these instructions.

Related Manuals:

3A4980

Gun

WARNING

FIRE AND EXPLOSION HAZARD

- The turbine motor generates sparks. Keep sprayer at least 20 feet (6m) from spray area. Use additional hose if necessary.
- Spraying flammable or combustible materials in a factory or fixed location must comply with NFPA 33 and OSHA 1910.94(c) requirements in the USA and with all similar local regulations in other countries.

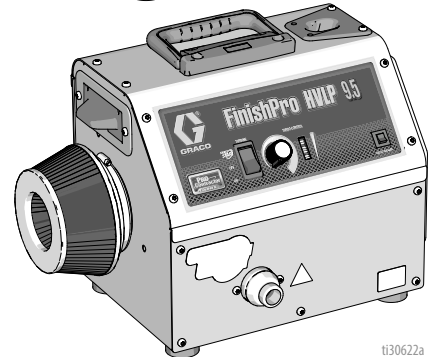
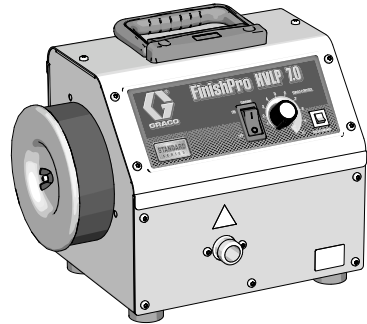






SERVICE
to every customer, every time

www.graco.com/techsupport



t130622a

Cleanup

Cleaning your sprayer and gun after every job is important. Proper care and maintenance results in optimal sprayer performance.

Cleaning Filters



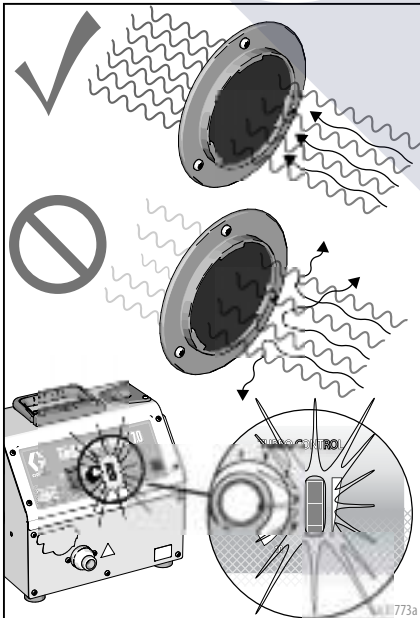
Cleaning the filters with flammable solvents may cause the equipment to ignite or explode. Do not use flammable solvents, such as lacquer thinner, to clean the filters.

The sprayer air filters must be clean at all times to provide sufficient air flow to cool the motor and atomize the fluid.

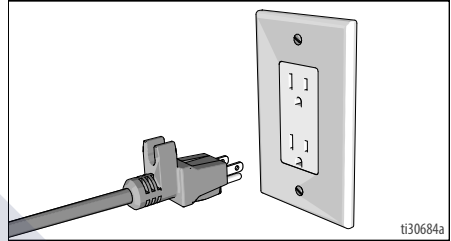
NOTICE

Damage to sprayer can occur if air filters are not cleaned properly.

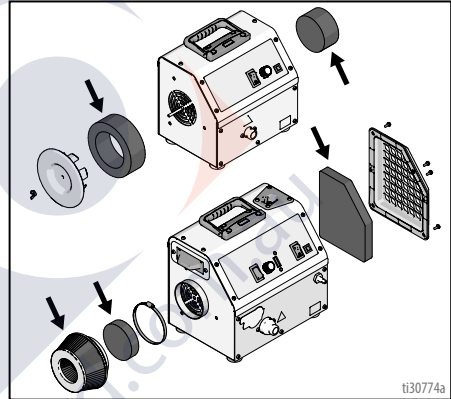
NOTE: ProContractor and ProComp models have a TurboControl LED indicator. Indicator will blink repeatedly to indicate clogged filter.



1. Perform **Pressure Relief Procedure**, page 10.
2. Unplug power cord from power outlet.



3. Remove turbine and motor air filters.



4. Clean air filters and replace as necessary:
 - Tap filter gently on flat surface, dirty side down.
 - Direct compressed air 30 psi (2 bar, 0.2 MPa) through filter from the clean side to the dirty side.

NOTICE

Damage to filter can occur if more than 100 psi (7 bar, 0.7 MPa) is applied.

- Soak filter for 15 minutes in water and mild detergent. Rinse filter until clean. Air dry.

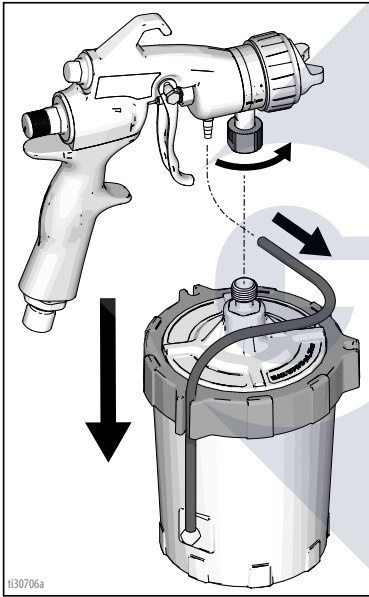
Cleanup

Cleaning FlexLiner System

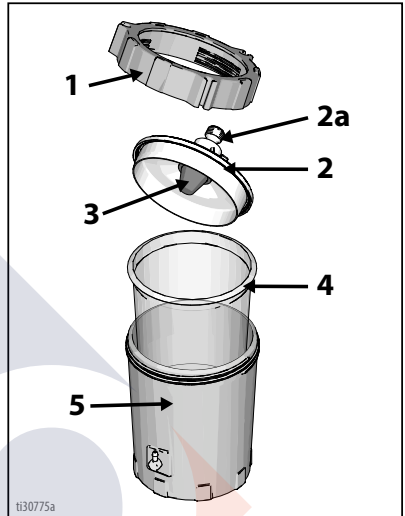
NOTICE

Solvents, such as lacquer thinner, can damage parts of the FlexLiner System. Do NOT immerse parts of the FlexLiner System in solvent.

1. Perform **Pressure Relief Procedure**, page 10.
2. Disconnect gun from FlexLiner system.



3. Loosen ring (1) from cup (5). Remove ring (1) and cover (2) from cup. Verify FlexLiner remains in cup upon removal of cover and ring.



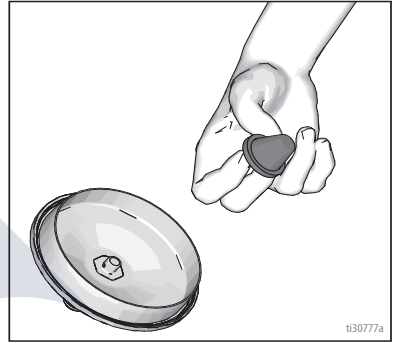
4. Return excess fluid to original container. Hold the FlexLiner (4) in place when pouring.



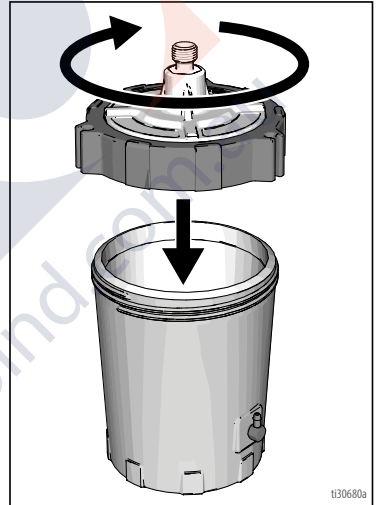
- It is recommended to dispose of the used FlexLiner (4) and install a new one. If reusing, clean by wiping all excess fluid from FlexLiner (4).



- Fill the FlexLiner (4) approximately half-full with cleaning fluid (warm water or appropriate solvent).
- Remove and clean material strainer (3) by flushing with cleaning fluid. Re-install material strainer (3).



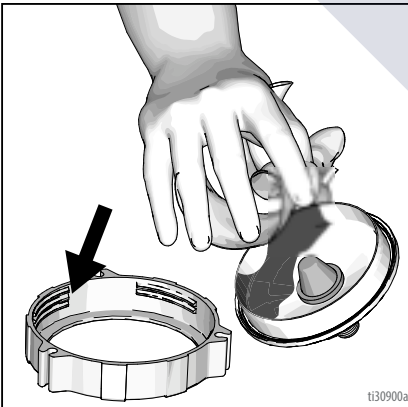
- Install cover (2) and ring (1) onto cup (5).



NOTICE

Dispose of FlexLiner, cleaning materials, and unused fluid according to local regulations. Refer to Safety Data Sheet (SDS) of fluids used.

- Wipe excess fluid from cover (2) and ring (1) of FlexLiner System.



Cleanup

10. Cover cup fitting (2a) with a rag, shake the entire FlexLiner System for a minimum of ten seconds.

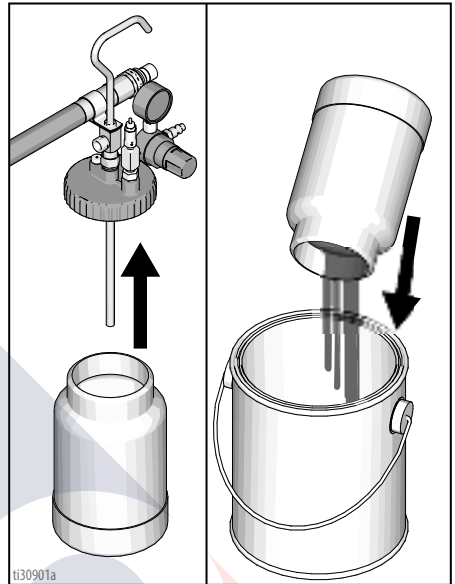


11. Wipe clean and dry all components of FlexLiner System. Properly dispose of cleaning fluid.

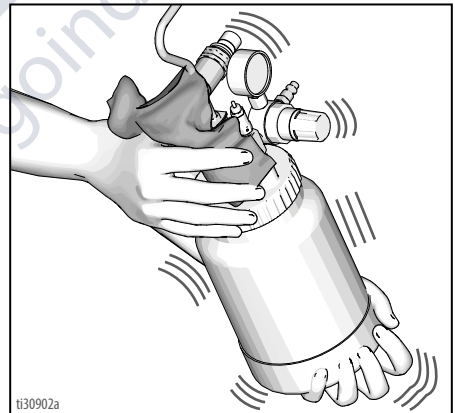


Cleaning ProComp Remote Cup

1. Perform **Pressure Relief Procedure**, page 10.
2. Remove cover from remote cup and return excess fluid to original container.



3. Wipe excess fluid from remote cup and cover.
4. Fill remote cup quarter-full with cleaning fluid (warm water or appropriate solvent).
5. Install cover.
6. Cover cup fitting with rag, shake remote cup assembly for a minimum of ten seconds.



7. Wipe clean and dry all components of remote cup. Properly dispose of cleaning fluid.

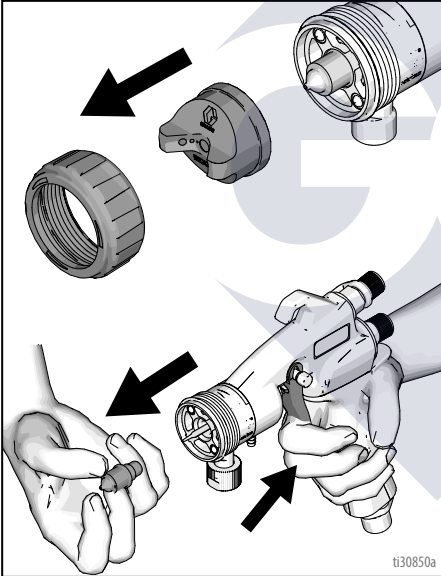
Cleaning HVLP Edge II Gun

NOTICE

Solvents, such as lacquer thinner, can damage parts of the HVLP Edge II gun. Do NOT immerse parts of the HVLP Edge II gun in solvent.

1. Remove retaining ring and air cap.
2. Trigger the gun and remove fluid nozzle from gun.

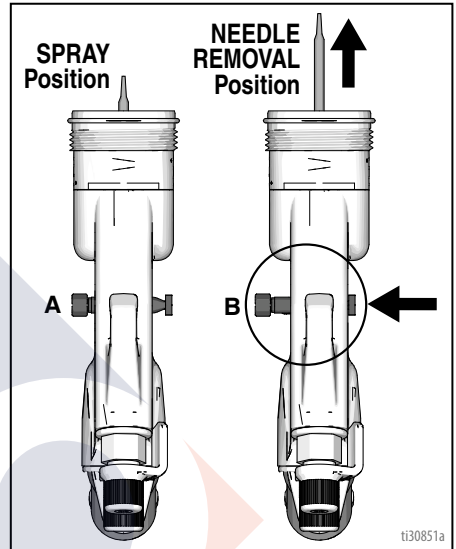
NOTE: Edge II Plus guns contain air cap guide and spring held in place by fluid nozzle. Upon removal of fluid nozzle, set aside air cap guide and spring.



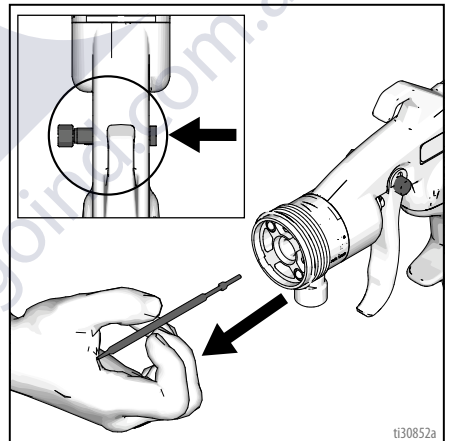
NOTICE

Trigger the gun whenever removing or installing the fluid nozzle. This prevents the fluid nozzle and needle seating surfaces from being damaged.

3. Move trigger slide from SPRAY position (A) to NEEDLE REMOVAL position (B).



4. Remove needle from front of gun.



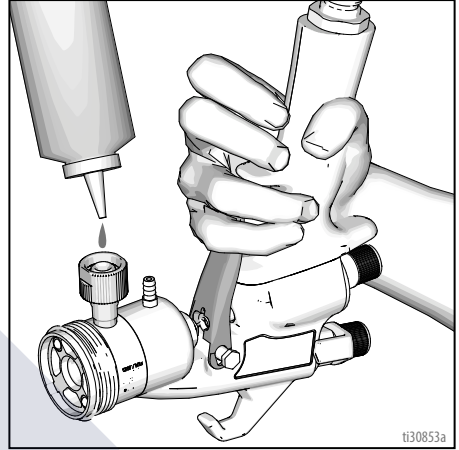
Cleanup

5. Wipe or flush fluid from nozzle and needle. If necessary, clean retaining ring, air cap, air cap guide, and spring.

NOTICE

Do not use metal tools to clean the fluid nozzle or air cap holes as this may scratch them, causing fluid leaks and a distorted spray pattern.

6. Using a squeeze bottle, flush cleaning fluid through the gun. Hold the gun upside down, pull the trigger, and dispense cleaning fluid into the cup connection.



7. Re-install needle and move trigger slide from NEEDLE REMOVAL position (B) to SPRAY position (A).
8. Trigger the gun and install spring, air cap guide, and fluid nozzle. Install air cap and retaining ring.

Troubleshooting



1. Follow **ProComp Models**, page 9, before checking or repairing.
2. Check all possible problems and causes before disassembling the unit.

Problem	Cause	What to Do
Sprayer not starting	No Power	Check electrical outlet for power. Cycle ON/OFF switch.
		Check that correct power cord is used and plugged in.
Sprayer not starting	Sprayer automatically shut-off while in SmartStart setting (ProContractor and ProComp models only)	Check circuit breaker. Push to reset.
		Verify air valve prior to gun is open. Trigger gun.
No fluid delivery	No material	Check cup for material. See Fill FlexLiner System , page 13.
		No cup pressurization
	Check for leaks in the FlexLiner System. See "FlexLiner System" section, page 28.	
	ProComp:	
	Check for air leaks from the remote cup cover and gasket. Tighten cover if loose. Clean or replace gasket as necessary.	
	Check for air flow from male quick-disconnect at ProComp outlet.	
	Turn pressure regulator on remote cup clockwise. Look for pressure on gauge. If no pressure, check air line fittings.	
	Check hole in remote cup cover at needle valve for blockage or dirt. Clean if necessary.	
	Gun tubing clogged	Check for obstructions in gun tubing. Clean or replace gun tubing if necessary.
	Fluid inlet clogged	Fluid inlet clogged
ProComp:		
Check if fluid pickup tube in remote cup is loose. Tighten.		
Blow out and clear material hose.		
Trigger pin in UNLOCK position	Trigger pin in UNLOCK position	Check trigger pin location. Must be in SPRAY position.

Troubleshooting

Problem	Cause	What to Do
Poor atomization	Dirty gun	Clean gun. See Cleaning HVLP Edge II Gun , page 25.
	Dirty air filters	Clean turbine and motor air filters. Replace as necessary. See Cleaning Filters , page 21.
	Extension cord too long	Extension cord must be a 3-wire, 12 AWG (2.5mm ²) minimum, 50 ft (15 m) maximum length.
	Air hose too long	Replace with shorter hose, no shorter than 20 ft (6,1 m)
	Leaking air hose connections	Disconnect and securely connect all hose connections.
Circuit breaker trips	Dirty air filters	Clean turbine and motor air filters. Replace as necessary. See Cleaning Filters , page 21.
	Incorrect power supply voltage	Verify power supply voltage is correct for sprayer model.
	High ambient temperature	Move sprayer to cooler area.
	Excessive current draw	Return to authorized service center.
TurboControl LED Indicator blinks (ProContractor and ProComp models only)	Dirty air filters	Clean turbine and motor air filters. Replace as necessary. See Cleaning Filters , page 21.
Sprayer shutoff while spraying	Circuit breaker	See "Circuit breaker trips" section above.
	Dirty air filters (Blinking TurboControl LED Indicator - ProContractor and ProComp models only)	Clean turbine and motor air filters. Replace as necessary. See Cleaning Filters , page 21.
	SmartStart active (ProContractor and ProComp models only)	Release gun trigger and re-trigger gun. Turn switch to ON position if SmartStart is not desired.
Sprayer does not automatically shut-off while in SmartStart setting (ProContractor and ProComp models only)	Leaking air hose connections	Verify air hose and attached components are those shipped with the sprayer.
		Disconnect air hoses. Verify o-ring is present inside connection fitting at turbine end of hose. If using a whip hose, verify gasket is present inside connection fitting. Securely connect all hose connections.
		Replace with Graco HVLP accessories, if necessary. See pages 36 and 37.
	Gun leaking air	Verify use of Edge II Plus gun. If SmartStart functions when air valve at end of hose is closed, clean gun. See Cleaning HVLP Edge II Gun , page 25. See separate HVLP Edge II Gun manual.
FlexLiner System:		

Problem	Cause	What to Do
FlexLiner does not collapse or collapses slowly	Dirty sealing surfaces	Remove ring, clean sealing surfaces, securely install ring. See Fill FlexLiner System , page 13.
	Incorrect or no air cap installed on gun	Verify Edge II air cap is installed.
	Air cap is loose	Edge II: Verify retaining ring is fully installed.
		Edge II Plus: Verify retaining ring is installed to a position that does not result in a loose air cap.
	Artisan Valve (if installed) is set too low for desired application	Rotate valve clockwise to increase air flow, until the desired flow is achieved.
	Gun tubing	Verify gun tubing is properly connected between the cup and gun.
		Verify gun tubing is not kinked.
Air leaking from cup	Damaged tubing. Remove damaged section of tubing. Replace tubing as necessary. See separate HVLP Edge II gun manual.	
	Damaged connection between cup and air fitting. Verify fitting is fully installed. If necessary, replace FlexLiner System. See separate HVLP Edge II gun manual.	
Fluid leaking between cup and ring	Cup filled too full	Verify cup is not filled above "MAX FILL" line.
	Dirty sealing surfaces	Remove ring, clean sealing surfaces, securely install ring. See Fill FlexLiner System , page 13.
Fluid leaking between cup and gun	Loose cup connection	Tighten connection. Use wrench as needed.
	Damaged o-ring on cup connection	Replace o-ring. Apply grease to o-ring to aid in assembly.
Fluid present at bottom of cup	FlexLiner not installed	Install FlexLiner.
	Damaged FlexLiner	Replace FlexLiner.
Pulsing spray pattern	Air not fully evacuated from FlexLiner System.	See step 3 of Startup , page 13.

Parts List - Standard Models

Ref. Part	Description	Qty	Ref. Part	Description	Qty
1	17R054 BOX, bottom, painted	1	21	108860 SCREW, machine	4
2	129531 SCREW, cap hex hd	1	22	17R055 COVER, back, painted	1
3	113817 BUMPER	4	23	114064 PLUG, inlet	1
4	100057 SCREW, cap, hex hd	4	24	15W998 SCREW, mach, torix	2
5	111040 NUT, lock, insert, nylock, 5/16	4	25	17N459 FITTING, barbed, exhaust	1
6	125135 WASHER, flat	3	26	100639 WASHER, lock	1
7	129443 NUT, coupler	3	27	101448 NUT, jam	1
8	GASKET, turbine	1	28	111593 SCREW, grounding	1
9	15W153 7.0 Standard	3	29	17N871 HOSE, air	1
	15W152 9.0 Standard		30	17R056 COVER, front, painted	1
	SPACER, back, turbine		31	17X786 KIT, cover	1
17N374	7.0 Standard	3	32	17N390 HANDLE, carry, pivot	1
	17N376 9.0 Standard		33	17R608 SCREW, mach, torx pan hd	4
10	194094 PLATE, turbine	1	34	116969 NUT, lock	4
11	SPACER, front, turbine	3	35	LABEL, standard series	1
	17N373 7.0 Standard		17P297 7.0 Standard		
	17N375 9.0 Standard		17P298 9.0 Standard		
12	KIT, repair, turbine (includes 6, 7, 8, 9, 10, 11, 13, 14, 18)	1	17U103 Model 17T980		
	17R936 Model 17N263, 17T980, 17U105		36	120660 SWITCH, rocker	1
	17R937 Model 17N264		37	17N957 KNOB, potentiometer	1
	17R939 Models 17P528, 17P534, 17R074		38	CIRCUIT, breaker	1
	17R940 Models 17P529, 17P535, 17R075		114403 120V Models		
			16A348 230V Models		
13	101530 SCREW, cap	3	39	17R296 KIT, filter (includes 39a, 39b)	1
14	192845 GASKET, duct	1	40	17N387 COVER, filter, turbine	1
15	17N388 HOUSING, filter, inlet, motor	1	41	100011 NUT, wing	1
16	129444 SCREW, machine, torx pan head	23	45	17R946 KIT, repair, potentiometer (includes 37, 67)	1
			55▲	17R297 LABEL, warning	1
17	15Y606 FITTING, barbed	1	56▲	15K616 LABEL, caution	1
18	17M388 PACKING, o-ring	1	62	102063 WASHER, lock, ext	1
19	17N436 FITTING, outlet	1	63▲	186620 LABEL, symbol, ground	1
20	KIT, repair, control, board (includes 21)	1	67	17X783 ISOLATOR	1
			69▲	17R747 LABEL, set, international (not shown)	1
17R942 120V Models			70	17X785 WASHER, nylon	1
17R943 230V Models					
116168 Model 17T980					

▲ Replacement Danger and Warning labels, tags, and cards are available at no cost.

Graco Information

For the latest information about Graco products, visit www.graco.com.

For patent information, see www.graco.com/patents.

TO PLACE AN ORDER, contact your Graco distributor or call 1-800-690-2894 to identify the nearest distributor.





All written and visual data contained in this document reflects the latest product information available at the time of publication.

Graco reserves the right to make changes at any time without notice.

Original instructions. This manual contains English. MM 3A4967

Graco Headquarters: Minneapolis
International Offices: Belgium, China, Japan, Korea

GRACO INC. AND SUBSIDIARIES • P.O. BOX 1441 • MINNEAPOLIS MN 55440-1441 • USA

Copyright 2014, Graco Inc. All Graco manufacturing locations are registered to ISO 9001.

www.graco.com
Revision E, May 2019