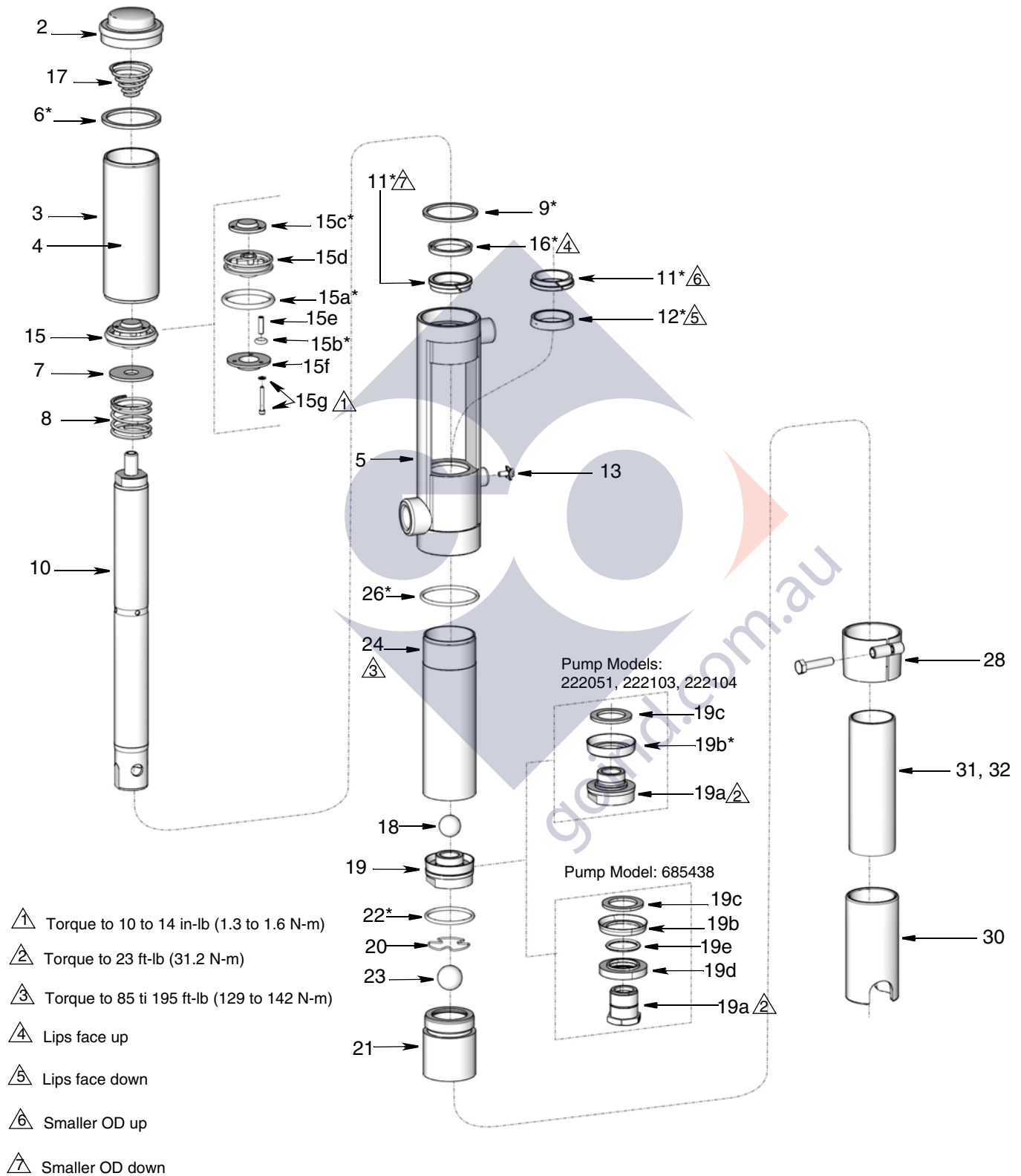


Parts



Parts

Model 222051, Series E Universal Pump

Includes items 1 through 26

Model 222103, Series E 55 Gallon Drum Bung-Mount Pump

Includes items 1 through 31

Model 22104, Series E 275 Gallon Tank Bung-Mount Pump

Includes items 1 through 30 and 32

Model 685438, Series E Universal Pump, PTFE Cup

Includes items 1 through 21, 23-26

Ref.	Part	Description	Qty.	Ref.	Part	Description	Qty.
1		AIR MOTOR (includes items 2 through 17)	1	19e	154662	O-RING, spacer	1
2	168825	CAP, air motor	1	20	157182	RETAINER, ball	1
3	185218	LABEL, identification	1	21	183009	HOUSING, intake valve	1
4	185528	CYLINDER, air	1	22*	626767	O-RING, nitrile rubber	1
5	183520	BASE, air motor	1	23	101190	BALL, steel; 1 inch (25 mm) dia	1
6*	162989	GASKET	1	24	196803	CYLINDER, fluid (for models 222051, 222103, 222104)	1
7	157872	WASHER, valve	1		191125	CYLINDER, fluid (for model 685438)	
8	157633	SPRING, compression, piston	1	26*	156641	O-RING, buna-N	1
9*	158109	GASKET	1	28	222308	BUNG ADAPTER	1
10	191389	PISTON ROD	1	30	110126	SPACER, foot	1
11*	185428	WIPER	2	31	191130	TUBE, extension, 55 gallon drum	1
12*	110247	SEAL	1	32	191131	TUBE, extension, 275 gallon tank	1
13	116343	SCREW, ground	1				
15	24J679	KIT, air valve (includes 15a through 15g)	1				
15a*	108357	O-RING	1				
15b*	108358	O-RING	3				
15c*	162729	PLATE, air exhaust valve	1				
15d	189210	PISTON	1				
15e	181485	SPACER, valve plate	1				
15f	181487	PLATE, valve	1				
15g	220884	SCREW/GASKET assembly	1				
16*	121010	SEAL, shaft	1				
17	157630	SPRING, compression	1				
18	100279	BALL, metallic, 0.88 inch (22.2 mm) diameter	1				
19		PISTON, fluid (models 222051, 222103, 222104)	1				
19a	196802	PISTON, fluid	1				
19b*	116152	CUP, piston	1				
19c	116153	WASHER	1				
19		PISTON, fluid (model 685438)	1				
19a	626767	PISTON, fluid	1				
19b	162871	CUP, piston	1				
19c	171594	WASHER	1				
19d	158857	SPACER, piston	1				

▲ Replacement safety labels, tags, and cards are available at no cost.

* Parts included in Kit 247431 (purchase separately).