

## RoadView™ Camera for RoadLazer™ Line Striping System

3A1216F

EN

### Video Guidance System (a RoadLazer System Option)

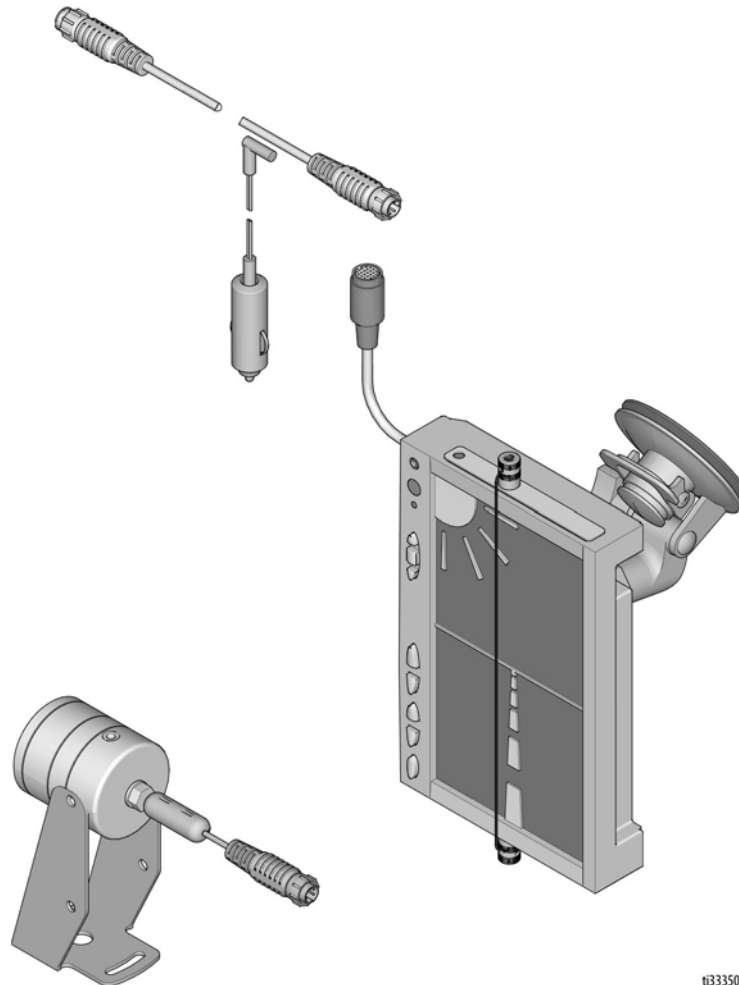
#### Model 24G633, Series A

*With color CCTV camera, LCD color monitor, cables, and mounting hardware*



#### Important Safety Instructions

Read all warnings and instructions in this manual and in related manuals.  
Be familiar with the controls and the proper usage of the equipment.  
Save these instructions.



t33350a

# Video Guidance System

## Installation

This manual makes references to other components in the RoadLazer System. For complete warnings and safety instructions see RoadLazer™ Line Striper System manual. Save these instructions.

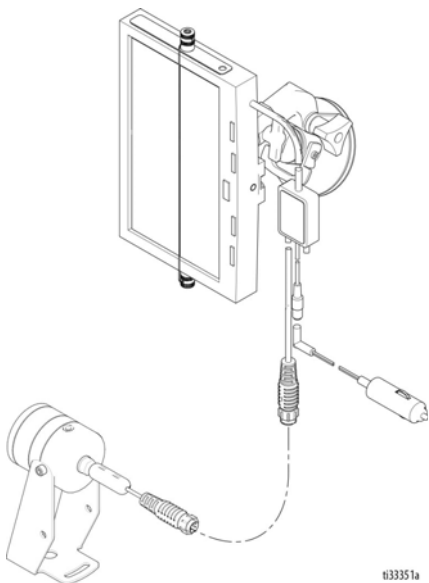
## Video Monitor Installation

### NOTICE

To Prevent damage to the video monitor:

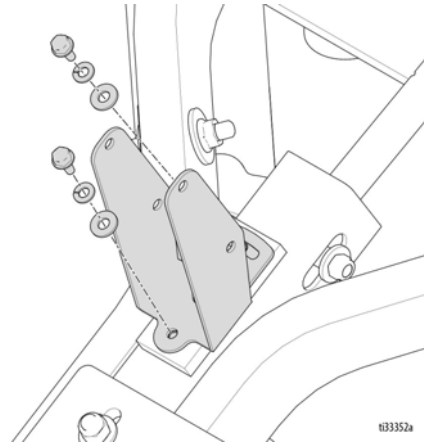
- Do not expose video monitor to extreme temperatures or direct sunlight.
- Avoid dust and moisture.
- Avoid dropping and strong impact.
- Turn power off and unplug the adaptor when not in use or during thunderstorm.
- Do not attempt to perform maintenance.

1. Mount video monitor in truck cab in a position that is easy to view. Mount it level with dashboard but not obstructing forward vision. Monitor mounting is supplied with windshield mounting bracket.
2. Connect plug of camera power/video cable to camera.
3. Connect monitor cable plug to monitor power cable.
4. Connect end of monitor power cable to truck receptacle.

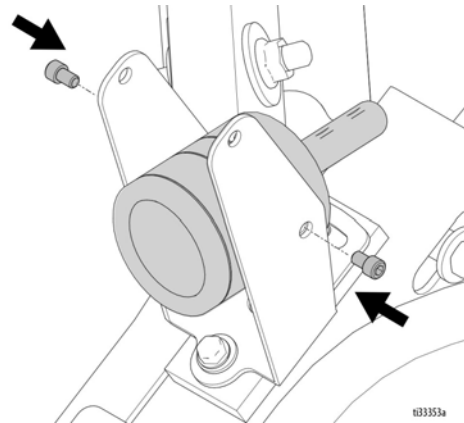


## Camera Installation on Gun Arm

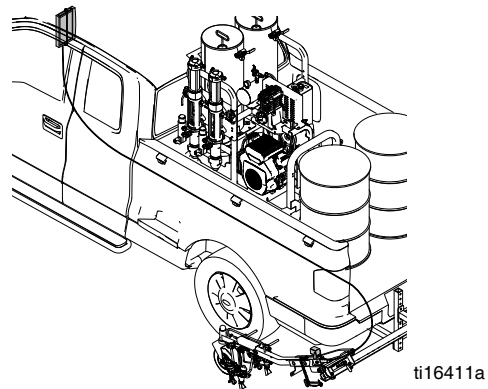
1. Install mounting bracket onto gun arm.



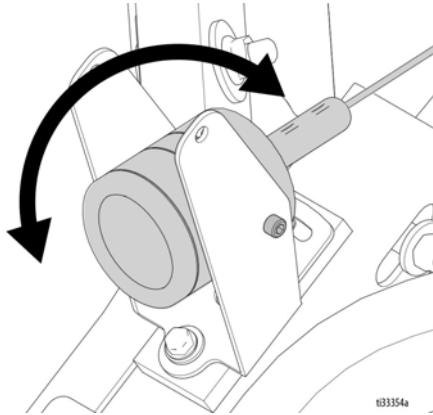
2. Mount camera to bracket with fasteners and tighten with fingers. **NOTE:** Camera can be mounted in either A or B locations.



3. Route camera cable through hose wrap and camera location. Plug camera into power/video cable. Turn monitor ON. Press A/V button once if image is not seen on monitor.

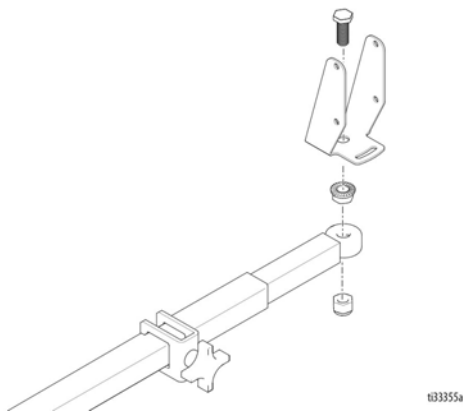


4. Aim camera in direction of travel then tighten to 12 in-lb. Review image on monitor to ensure camera is in correct orientation.

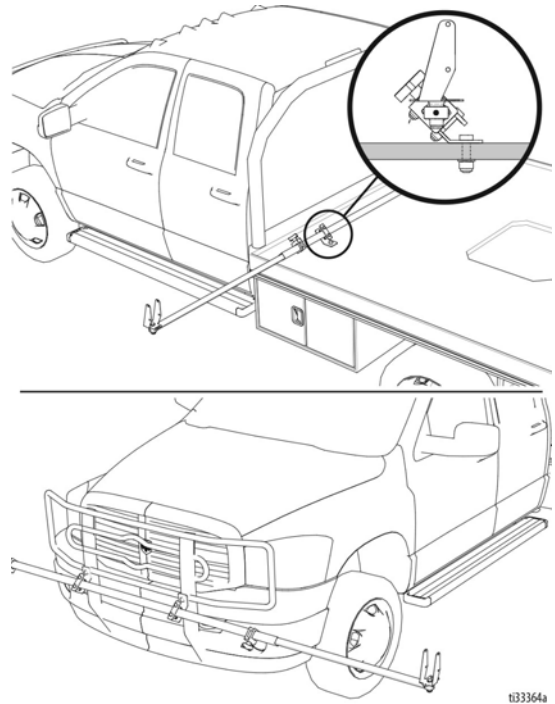


### Camera Installation on Flatbed

1. Install mounting bracket onto extension arm.

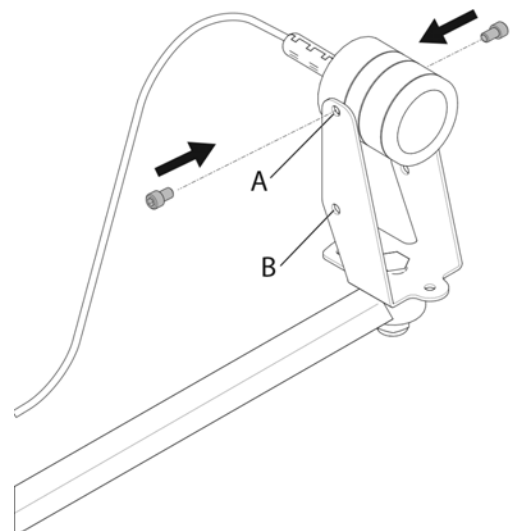


2. Mount extension arm to flatbed, or other desired location on truck.

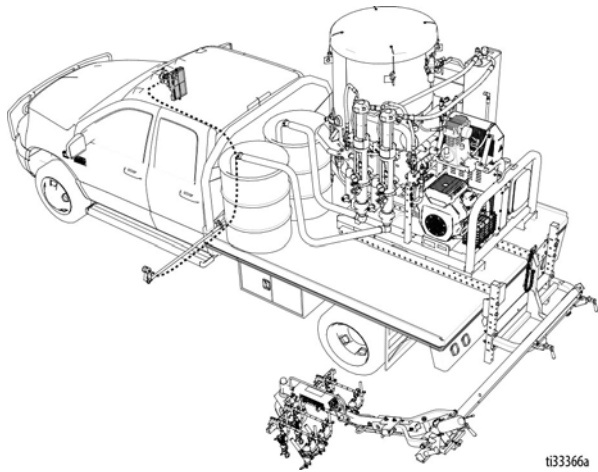


3. Mount camera to bracket with fasteners and tighten with fingers.

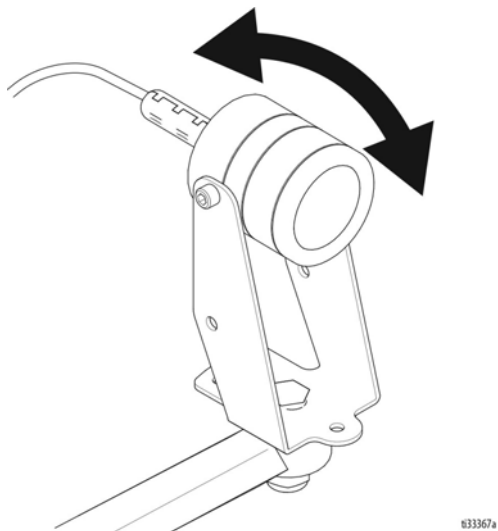
**NOTE:** Camera can be mounted in either A or B locations.



4. Route camera cable accordingly.



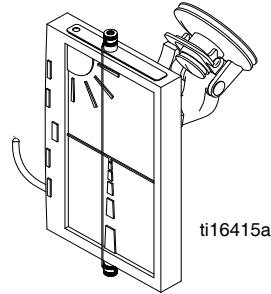
5. Aim camera in direction of travel then tighten to 12 in-lb. Review image on monitor to ensure camera is in correct orientation.



### Install Cross hairs (Optional)

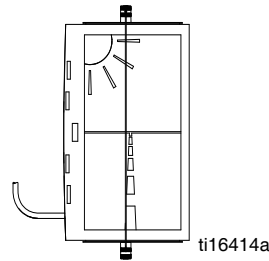
Elastic cross hairs allow the user to create a reference line to guide the vehicle while striping. A vertical line may be used to define the reference point.

1. Install TABS onto monitor after it has been placed in the vehicle. For best results wipe monitor sides with alcohol to remove any contaminants from the surface. Remove tape film and apply tab to monitor in the desired location (2 places).

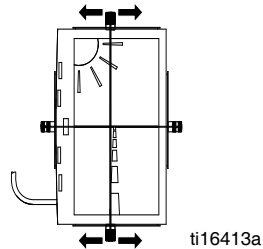


(Preferred Orientation)

2. Mount magnet line to monitor. For best reference the line should be as close as possible to the monitor.



3. Adjust vertical line to your preference by sliding the magnet on the monitor (if cross hairs are desired).

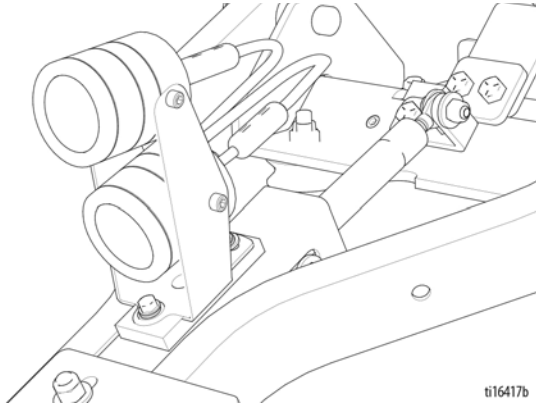


**NOTE:** Remove monitor when not in use to prevent it from obstructing view while driving.

**NOTE:** When not in use, disconnect power to monitor to prevent power from being drained from vehicle battery.

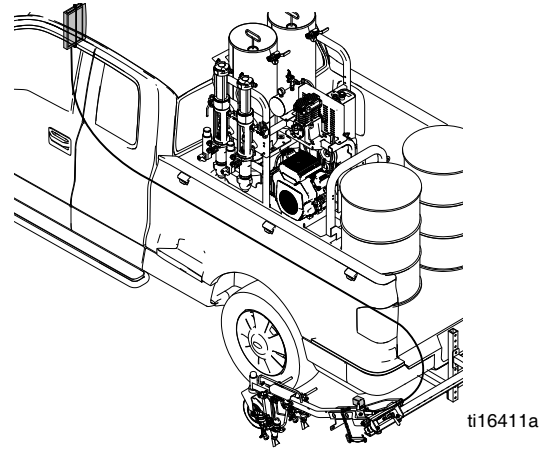
## Installing the Auxiliary Camera (Optional)

1. Select view location for camera. The gun arm bracket is made to accommodate 2 cameras. To mount second camera see **Camera Installation** steps 3-5 (page 4). Press A/V button to switch between cameras on monitor.



(Alternative Mounting)

2. The magnetic base can be used to mount camera in any location with ferrous material. Route cable accordingly.



# Operation

For RoadLazer operating instructions, see RoadLazer System manual 3A5384.



6 mm



16 mm

## Striping

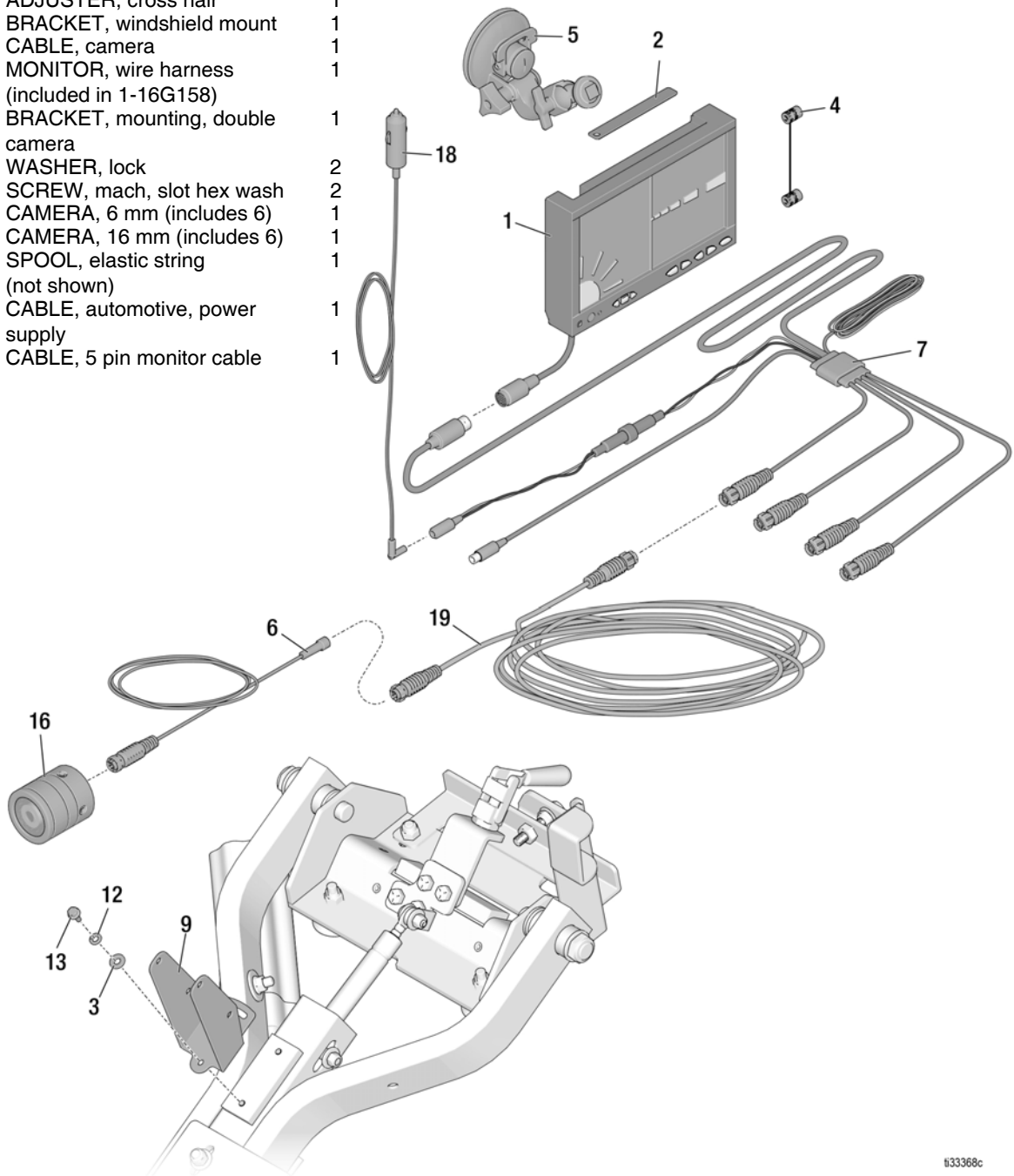
To get accustomed to using a reference string to paint lines, practice spraying with water. The cross hairs can be moved across the screen in infinite increments to provide a guideline to place accurate lines. For example, when painting a single line the elastic string can be placed centered on the paint gun. When driving, keep the line to be painted on the elastic string for accurate overlay. Alternately, the elastic string can be placed in the center of the gun arm as shown above. In this case the driver would keep a constant from one line or centered between two lines. Using the elastic string is a matter of user preference. This can be mastered after minutes of use to paint accurate lines on roadway surfaces. A second camera can be mounted onto the gun arm for a wider angle view. This can be useful for painting curved lines. To switch between two cameras press the AV button.

# Troubleshooting

Problem	Cause	Solution
No picture on video monitor screen	<p>No power to camera or monitor</p> <p>No video signal</p>	<p>Check connections.</p> <p>Check truck fuse.</p> <p>Check video connections. Repair or replace cable.</p> <p>Check cable connection between monitor video cable (122) and camera power cable (61).</p>
Faint or hard-to-see image on video monitor screen	Glare on video monitor screen	<p>Tilt monitor back slightly.</p> <p>Rotate monitor slightly left or right.</p> <p>Wear dark clothing.</p> <p>Tint truck windows.</p>
Washed out colors on video monitor screen	Contrast or color settings out of adjustment	Adjust with controls on monitor.

# Parts - Video Camera and Gun Arm Mounting Assembly

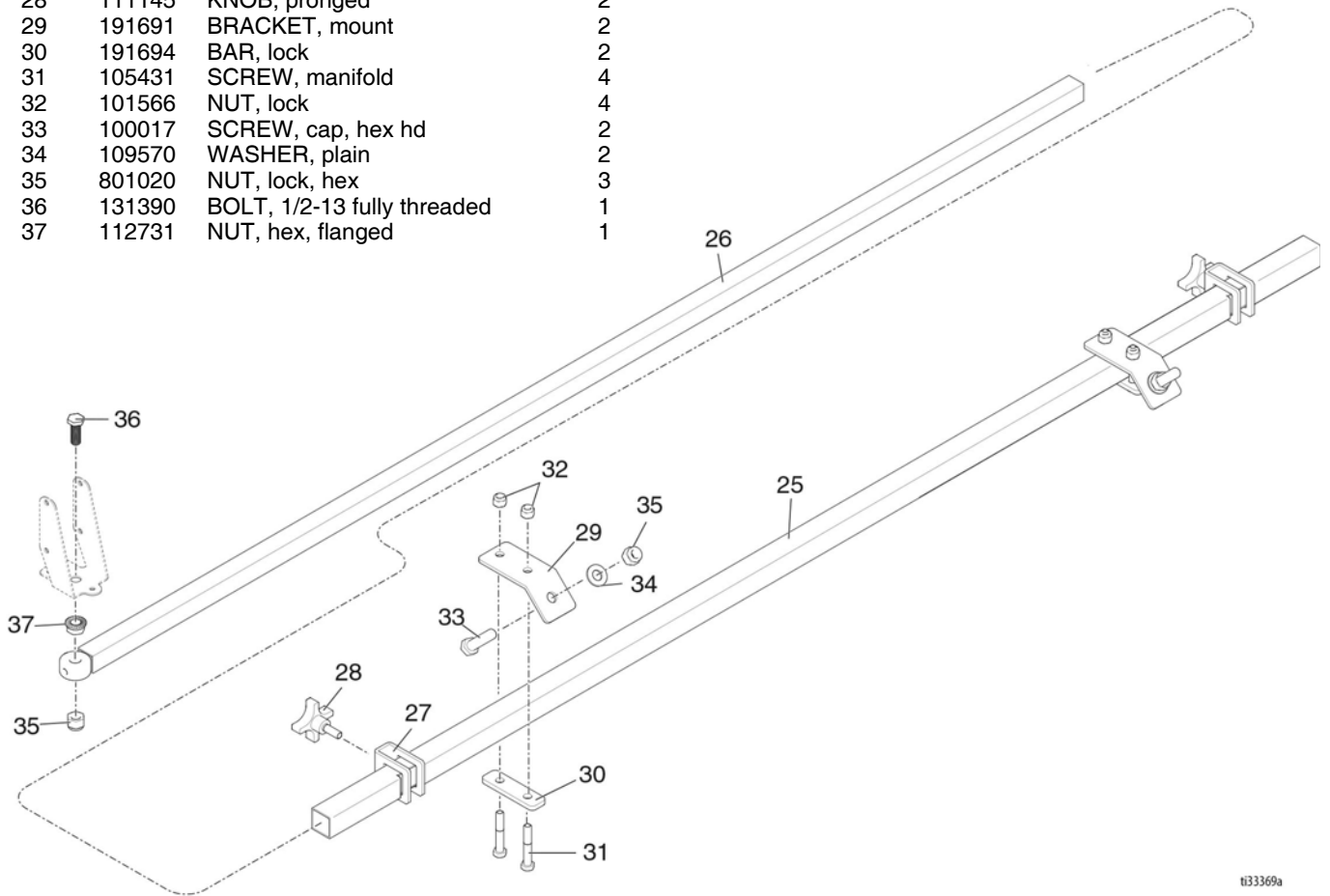
Ref.	Part	Description	Qty.
1	16G158	MONITOR, LCD, color	1
	24H612	KIT, monitor (includes 5)	1
2	24G838	SLIDE, cross hair with tape	2
3	110755	WASHER, plain	2
4	24G837	ADJUSTER, cross hair	1
5	16G443	BRACKET, windshield mount	1
6	131812	CABLE, camera	1
7	17Y658	MONITOR, wire harness (included in 1-16G158)	1
9	16G444	BRACKET, mounting, double camera	1
12	100016	WASHER, lock	2
13	101501	SCREW, mach, slot hex wash	2
16	24G771	CAMERA, 6 mm (includes 6)	1
	24H555	CAMERA, 16 mm (includes 6)	1
17	16G442	SPOOL, elastic string (not shown)	1
18	16G448	CABLE, automotive, power supply	1
19	16G160	CABLE, 5 pin monitor cable	1



133368c

# Parts - Extension Mounting Arm

Ref.	Part	Description	Qty.
25	191692	BRACKET, support	1
26	24F989	EXTENSION, arm, guide	1
27	224136	CLAMP, extension	2
28	111145	KNOB, pronged	2
29	191691	BRACKET, mount	2
30	191694	BAR, lock	2
31	105431	SCREW, manifold	4
32	101566	NUT, lock	4
33	100017	SCREW, cap, hex hd	2
34	109570	WASHER, plain	2
35	801020	NUT, lock, hex	3
36	131390	BOLT, 1/2-13 fully threaded	1
37	112731	NUT, hex, flanged	1



t33369a

# Technical Data

<b>Video Guidance System</b>	
Electrical requirements	
Sender input	12-15 VDC
Ground	Negative
Operating Temperature	32 - 130 F (0 - 54 C)
Weight (approximate)	
Camera and bracket (with magnet)	0.75 lb (0.34 kg)
Monitor	1.25 lb (0.57 kg)
Dimensions (approximate)	
Camera Body	2.54 L x 2.32 Dia.
Monitor	9.06 in. L x 6.0 in. W x 1.40 in. D

# Graco Standard Warranty

Graco warrants all equipment referenced in this document which is manufactured by Graco and bearing its name to be free from defects in material and workmanship on the date of sale to the original purchaser for use. With the exception of any special, extended, or limited warranty published by Graco, Graco will, for a period of twelve months from the date of sale, repair or replace any part of the equipment determined by Graco to be defective. This warranty applies only when the equipment is installed, operated and maintained in accordance with Graco's written recommendations.

This warranty does not cover, and Graco shall not be liable for general wear and tear, or any malfunction, damage or wear caused by faulty installation, misapplication, abrasion, corrosion, inadequate or improper maintenance, negligence, accident, tampering, or substitution of non-Graco component parts. Nor shall Graco be liable for malfunction, damage or wear caused by the incompatibility of Graco equipment with structures, accessories, equipment or materials not supplied by Graco, or the improper design, manufacture, installation, operation or maintenance of structures, accessories, equipment or materials not supplied by Graco.

This warranty is conditioned upon the prepaid return of the equipment claimed to be defective to an authorized Graco distributor for verification of the claimed defect. If the claimed defect is verified, Graco will repair or replace free of charge any defective parts. The equipment will be returned to the original purchaser transportation prepaid. If inspection of the equipment does not disclose any defect in material or workmanship, repairs will be made at a reasonable charge, which charges may include the costs of parts, labor, and transportation.

**THIS WARRANTY IS EXCLUSIVE, AND IS IN LIEU OF ANY OTHER WARRANTIES, EXPRESS OR IMPLIED, INCLUDING BUT NOT LIMITED TO WARRANTY OF MERCHANTABILITY OR WARRANTY OF FITNESS FOR A PARTICULAR PURPOSE.**

Graco's sole obligation and buyer's sole remedy for any breach of warranty shall be as set forth above. The buyer agrees that no other remedy (including, but not limited to, incidental or consequential damages for lost profits, lost sales, injury to person or property, or any other incidental or consequential loss) shall be available. Any action for breach of warranty must be brought within two (2) years of the date of sale.

**GRACO MAKES NO WARRANTY, AND DISCLAIMS ALL IMPLIED WARRANTIES OF MERCHANTABILITY AND FITNESS FOR A PARTICULAR PURPOSE, IN CONNECTION WITH ACCESSORIES, EQUIPMENT, MATERIALS OR COMPONENTS SOLD BUT NOT MANUFACTURED BY GRACO.** These items sold, but not manufactured by Graco (such as electric motors, switches, hose, etc.), are subject to the warranty, if any, of their manufacturer. Graco will provide purchaser with reasonable assistance in making any claim for breach of these warranties.

In no event will Graco be liable for indirect, incidental, special or consequential damages resulting from Graco supplying equipment hereunder, or the furnishing, performance, or use of any products or other goods sold hereto, whether due to a breach of contract, breach of warranty, the negligence of Graco, or otherwise.

## **FOR GRACO CANADA CUSTOMERS**

The Parties acknowledge that they have required that the present document, as well as all documents, notices and legal proceedings entered into, given or instituted pursuant hereto or relating directly or indirectly hereto, be drawn up in English. Les parties reconnaissent avoir convenu que la rédaction du présente document sera en Anglais, ainsi que tous documents, avis et procédures judiciaires exécutés, donnés ou intentés, à la suite de ou en rapport, directement ou indirectement, avec les procédures concernées.

# Graco Information

For the latest information about Graco products, visit [www.graco.com](http://www.graco.com).

For patent information, see [www.graco.com/patents](http://www.graco.com/patents).

**TO PLACE AN ORDER**, contact your Graco distributor or call 1-800-690-2894 to identify the nearest distributor.

*All written and visual data contained in this document reflects the latest product information available at the time of publication.  
Graco reserves the right to make changes at any time without notice.*

Original instructions. This manual contains English. MM 3A1216

**Graco Headquarters:** Minneapolis

**International Offices:** Belgium, China, Japan, Korea

**GRACO INC. AND SUBSIDIARIES • P.O. BOX 1441 • MINNEAPOLIS MN 55440-1441 • USA**  
**Copyright 2017, Graco Inc. All Graco manufacturing locations are registered to ISO 9001.**

[www.graco.com](http://www.graco.com)

Revision F, March 2020