

1. INDEX

Table with 2 columns: Page number, Index entry (INDEX CONFORMITY, CE DECLARATION, GENERAL PRECAUTIONS, SAFETY INSTRUCTIONS, etc.)

2. CONFORMITY

2.1 DECLARATION OF CONFORMITY
The undersigned: PIUSI S.p.A. Via Pacinotti 16/A z.l. Rangavino 46029 Suzzara - Mantova - Italy

DECLARES on its own responsibility, that the machine described below. Description: Dispenser AD-Blue® for cars. Model: Delphin PRO

Documents are made available to the appropriate authority on request at Piusi S.p.A. Alternatively, it can be requested writing to e-mail: doc.tec@piusi.com

Otto Varini The legal representative

2.2 DECLARATION OF COMPATIBILITY

The undersigned: PIUSI S.p.A. Via Pacinotti 16/A z.l. Rangavino 46029 Suzzara - Mantua - Italy

DECLARES THAT DELPHIN EVO COMPONENTS IN DIRECT CONTACT WITH THE LIQUIDS HANDLED, HAVE BEEN TESTED IN CONFORMITY WITH THE FOLLOWING DIRECTIVES

Otto Varini The legal representative

3. GENERAL PRECAUTIONS

Important warnings: In order to protect workers' safety, to avoid damaging the distribution system and before performing any operation, please read the whole instruction manual.

Manual storage: This manual must be intact and completely readable. The final users, as well as the qualified technicians authorised to installation and maintenance must be able to view it at any time.

4. SAFETY INSTRUCTIONS

4.1 SAFETY WARNINGS
CAUTION! Before installation, make sure that the electric power supply network is fitted with a suitable earth-line and complies with the regulations in force.

Control and maintenance operations Prohibitions: Before any checks or maintenance work are carried out, switch the system's power off by disconnecting the plug from the socket.

3.2 FIRST AID MEASURES

Contact with the product: For issues arising from the treated product with EYES, SKIN, INHALATION and INGESTION refer to the DEF SAFETY DATA SHEET.

3.3 GENERAL SAFETY NORMS

Personal protection equipment features: Wear personal protection equipment that is: suitable to the operations to be performed; resistant to the various cleaning products used.

5. DISTRIBUTION SYSTEM PACKAGING

The dispensing system comes packed in a cardboard box bearing the following markings: an arrow indicating the TOP side.

5.1. CONTENTS OF THE PACKAGING
Forward: In order to open the cardboard box, use scissors or a cutter, paying attention not to damage the distribution system or its components.

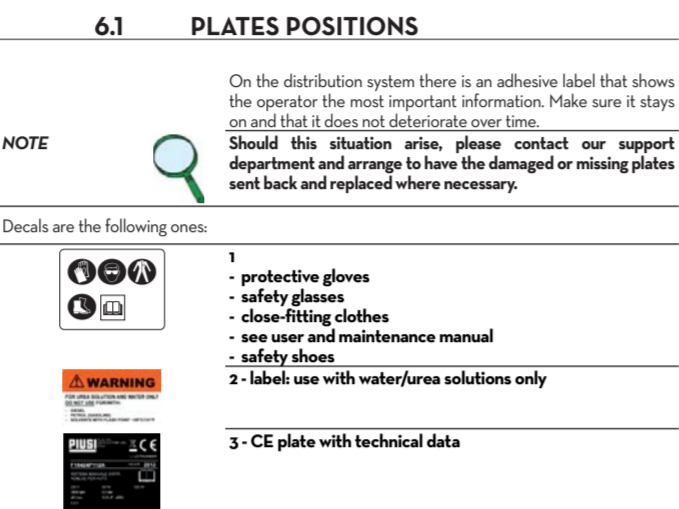
5.2 DELPHIN PRO COMPOSITION



6. MACHINE AND MANUFACTURER IDENTIFICATION

The distribution system is provided with an identification marking located directly on the pump. This indicates the following information: model; lot number / Production year; technical data; use and maintenance handbook code.

6.1 PLATES POSITIONS



7. TECHNICAL CHARACTERISTICS

Table with 2 columns: Parameter (Max. dimensions, Technical data) and Value (800 mm Length, 220 / 230 V Voltage, etc.)

8. DIRECTED USE

Intended use: The dispensing system "Delphin PRO" was designed and built for the distribution of the product called AdBlue®, D.E.F. (Diesel Exhaust Fluid) or water.

9. CHARACTERISTICS OF THE PRODUCTS HANDLED

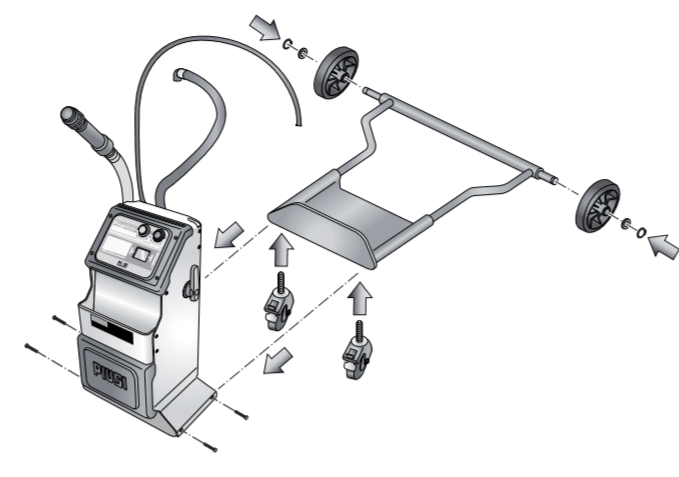
Products permitted: The "Delphin PRO" dispensing system was designed and built to dispense a special liquid, made from an aqueous urea solution, known as AdBlue®/D.E.F., based on the ISO 22241 standard.

10. INSTALLATION

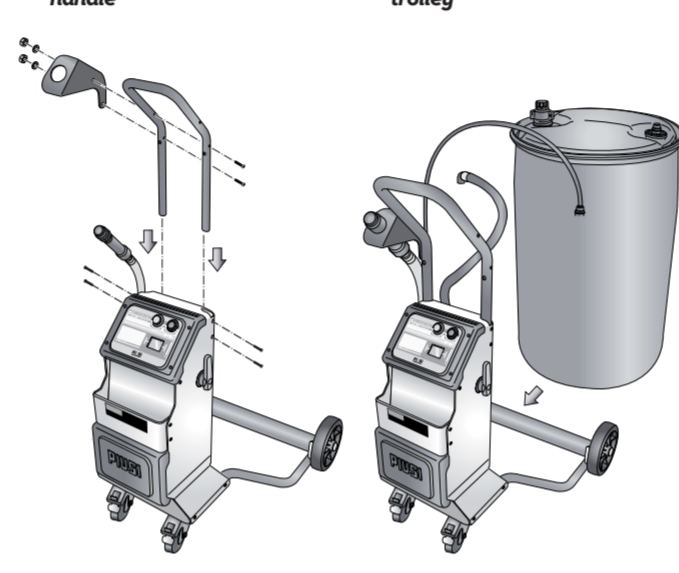
Forward: The "Delphin PRO" dispensing system has been designed and arranged on a trolley for ease of use and delivery. Installation must be performed exclusively by qualified and authorised staff.

11. ASSEMBLING

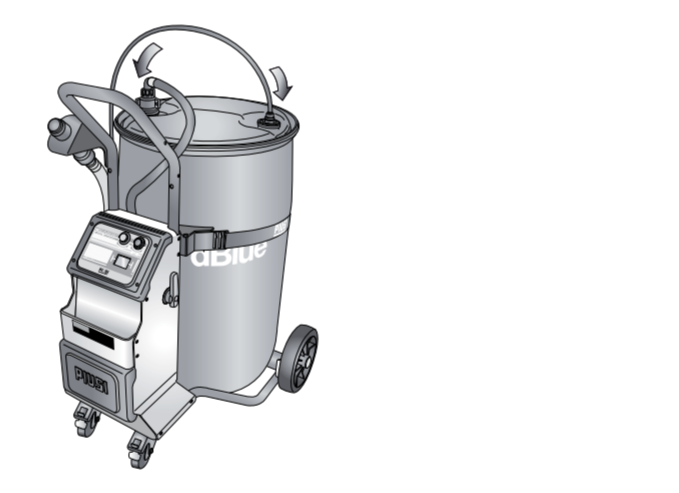
1- Installation of wheels on the trolley: Assemble as shown in the illustrations. See components numbering. The wheels can be installed on the inside or outside of the trolley, depending on the drum type.



2- Installation of bracket and handle



4- Connection of pipes to the drum



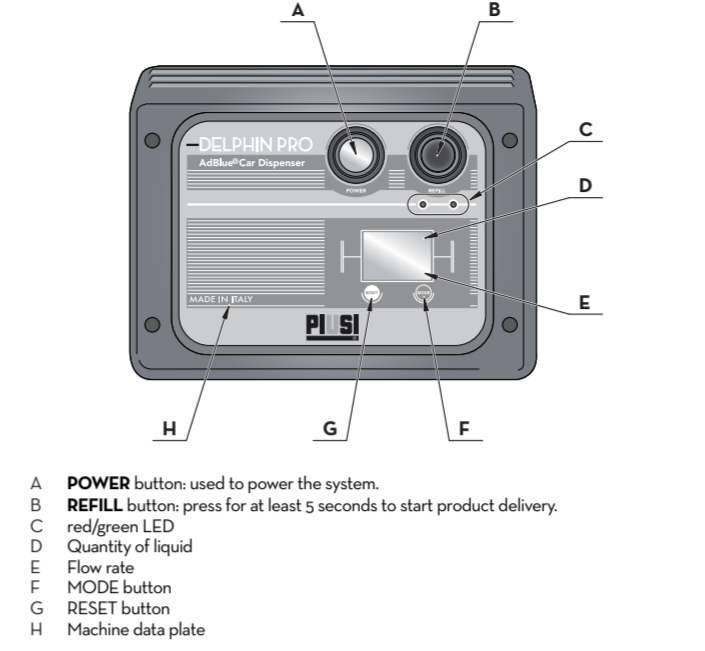
12. OPERATION AND USE

WARNING: To remove any substance residue or foreign matters from the pipes, wash the system before putting it into operation. To wash the system, follow the same dispensing procedures using demineralized or deionized water and eventually rinse with AdBlue®.

12.3 PHASES OF DELIVERY

1. Connect the delivery hose to the car. 2. Press POWER button [A]. 3. Press the REFILL button [B] for 5 seconds. 4. Wait for the filling end.

12.1 DISPLAY

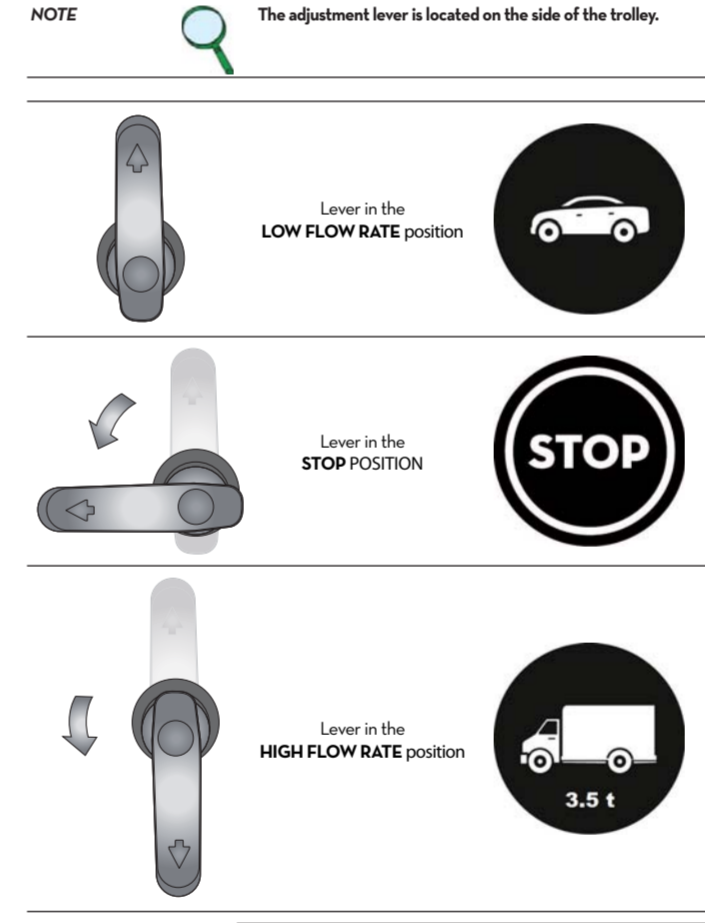


CAUTION: If the label is damaged, DO NOT use the machine and replace the label immediately.

12.1.1 LED INDICATOR TABLE

Table with 4 columns: White lamp, Red LED, Green LED, System status (OFF, Stand By, Start-up, etc.)

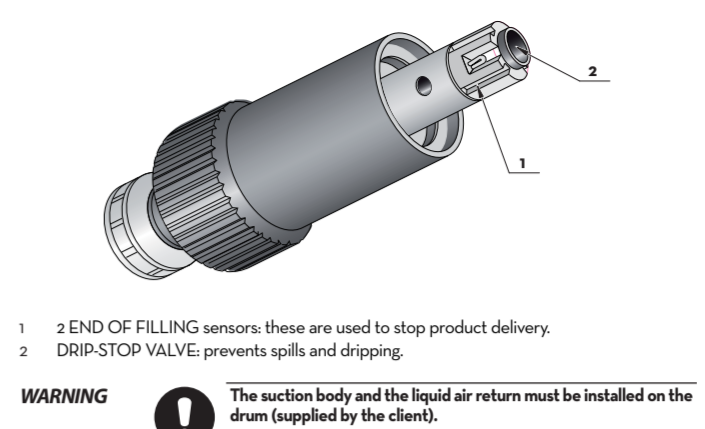
12.2 FLOW RATE ADJUSTMENT LEVER



12.3 PHASES OF DELIVERY

1. Connect the delivery hose to the car. 2. Press POWER button [A]. 3. Press the REFILL button [B] for 5 seconds.

12.4 END OF FILLING SENSORS



13. LEAVING THE SYSTEM UNUSED FOR LONG PERIODS OF TIME

Operations to be carried out: Whenever it is thought that the system will remain unused for at least 15 days, it must be emptied in order to prevent the product from crystallising inside.

14. WASHING THE DISPENSING SYSTEM

Forward: The dispensing system requires washing in order to remove product crystallisation which may damage the plant. CAUTION: Wear personal protective equipment (PPE) when performing the wash cycle.

15. MAINTENANCE

Safety warnings: The distribution system has been designed and built to require minimum maintenance. Before carrying out any maintenance work, disconnect the dispensing system from any electrical and hydraulic power source.

16. TROUBLESHOOTING

Table with 3 columns: TROUBLE (THE MOTOR IS NOT TURNING, THE MOTOR TURNS SLOWLY WHEN STARTING, etc.), POSSIBLE CAUSE, CORRECTIVE ACTION.

Piusi S.p.A. - customer care tel. 0039 0376 254561 e-mail: customercare@piusi.com

MADE IN ITALY Installation, use and maintenance IT Installazione uso e manutenzione BULLETIN MO406_ML ITEN_OO

17. SCRAPPING AND DISPOSAL

Forward: In case the system should be demolished, its parts must be given to companies specialised in industrial waste disposal and recycling.

