

# High Pressure Swivels

307005F

EN

**Models 207947, 196337, 207948**

6000 psi (41 MPa, 414 bar) Maximum Working Pressure

**Models 207946, 24P834**

6500 psi (45 MPa, 448 bar) Maximum Working Pressure

**Models 17G981, 17G980**

7250 psi (50 MPa, 500 bar) Maximum Working Pressure



**Important Safety Instructions**

Read all warnings and instructions in this manual before using the equipment. Save these instructions.

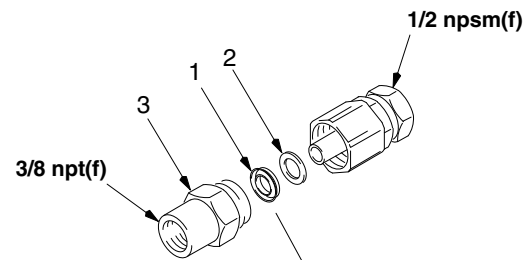
## **WARNING**

Spray from the gun, leaks or ruptured components can inject fluid into your body and cause extremely serious injury, including the need for amputation. Fluid splashed in the eyes or on the skin can also cause serious injury.

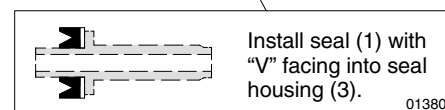
- Do not exceed the maximum working pressure of the swivels.
- Always relieve pressure before removing, checking, or servicing the swivels.
- Do not stop or deflect leaks with your hand, body, glove or rag.

**Model 207946, Series B, 17G981, Series A,  
Model 24P834, Series A, and 17G980,  
Series A  
Straight Swivel; 3/8 npt(f) x 1/2 npsm(f)**

Ref. Part	Description	Qty.
1	102918 SEAL, polyurethane (207946, 17G981)	1
	111689 SEAL, PTFE (24P834, 17G980)	1
2	168667 WASHER	1
3	168666 HOUSING, seal; 1-20 UNEF-2A(m) x 3/8-18 npt(f)	1

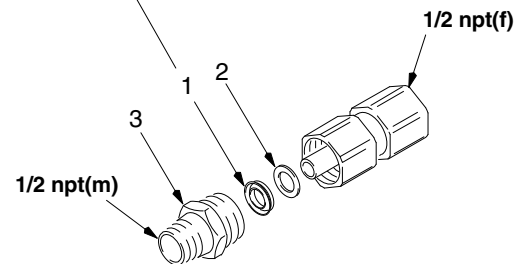


01377



**Model 207947, Series B and  
Model 196337, Series A  
Straight Swivel; 1/2 npt(m) x 1/2 npt(f)**

Ref. Part	Description	Qty.
1	102918 SEAL, polyurethane (207947 only)	1
	111689 SEAL, PTFE (196337 only)	1
2	168667 WASHER	1
3	168670 HOUSING, seal; 1-20 UNEF-2A(m) x 1/2-14 npt(m)	1



01373

## Optional PTFE Seal 111689 with stainless steel spring

For use with straight swivels 207946 and 207947 to replace the polyurethane seal.

Unscrew the seal housing (4) and remove the seal (1) and washer (3).

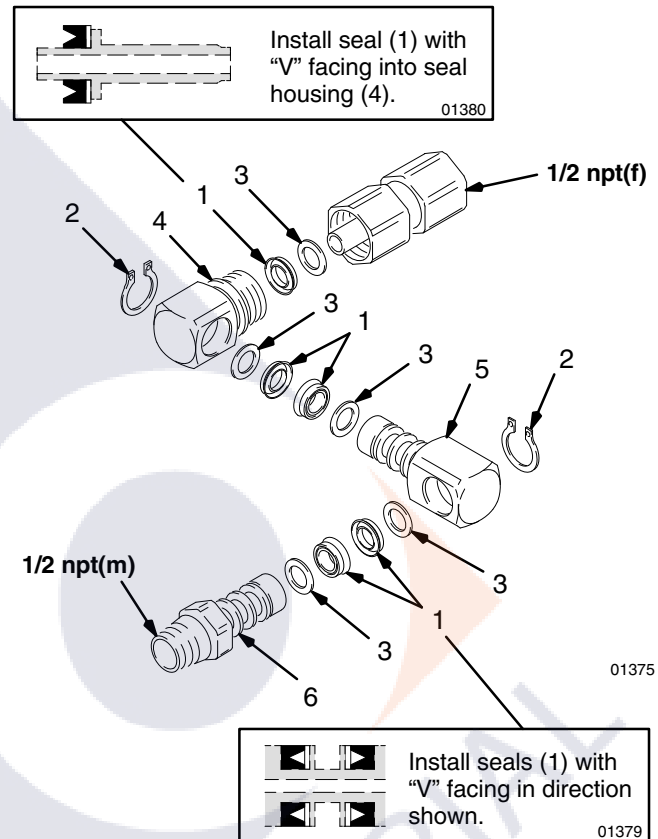
Lubricate the new seals with No. 2 lithium base grease and assemble as shown at right.

## Straight Swivel Service

To replace the seal (1), unscrew the seal housing (3) and remove the seal and back-up washer (2). Lubricate the new seal with No. 2 lithium base grease and install as shown above.

### Model 207948, Series B Zee Swivel; 1/2 npt(f) x 1/2 npt(m)

Ref.	Part	Description	Qty.
1	102918	SEAL; polyurethane	5
2	102919	RING, retaining	2
3	168667	WASHER	5
4	168671	HOUSING, seal	1
5	168672	STUD, swivel	1
6	168673	COUPLING, swivel; 1/2-14 npt(m)	1



## Zee Swivel Service

To replace the seal, remove the retaining ring (2) from the swivel stud (5). Pull the swivel coupling (6) from the swivel stud (5). Remove the seals (1) and washers (3).

Remove the retaining ring (2) from the seal housing (4). Pull the swivel stud (5) from the seal housing (4). Remove the seals (1) and washers (3).

## Graco Information

For the latest information about Graco products, visit [www.graco.com](http://www.graco.com).

For patent information, see [www.graco.com/patents](http://www.graco.com/patents).

**TO PLACE AN ORDER, contact your Graco distributor or call to identify the nearest distributor.**

**Phone: 612-623-6928 or Toll Free: 1-800-533-9655, Fax: 612-378-3590**

*All written and visual data contained in this document reflects the latest product information available at the time of publication. Graco reserves the right to make changes at any time without notice.*

Original instructions. This manual contains English. MM 307005

**Graco Headquarters:** Minneapolis

**International Offices:** Belgium, China, Japan, Korea

**GRACO INC. AND SUBSIDIARIES • P.O. BOX 1441 • MINNEAPOLIS MN 55440-1441 • USA**  
**Copyright 1992, Graco Inc. All Graco manufacturing locations are registered to ISO 9001.**

[www.graco.com](http://www.graco.com)  
 Revision F, July 2018