

DutyMax EH/GH™ 230/300, DH230 HD Hydraulic Sprayers

334606J

EN

For professional use only.

Not approved for use in explosive atmosphere or hazardous locations.

For portable airless spraying of architectural paints and coatings.

3300 psi (22.8 MPa, 228 bar) Maximum Working Pressure

See page 3 for model information, including maximum working pressure and approvals.



Important Safety Instructions

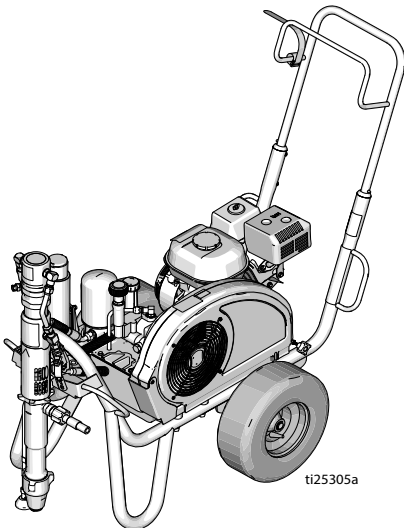
Read all warnings and instructions in this manual and in related manuals.

Be familiar with the controls and the proper usage of the equipment.

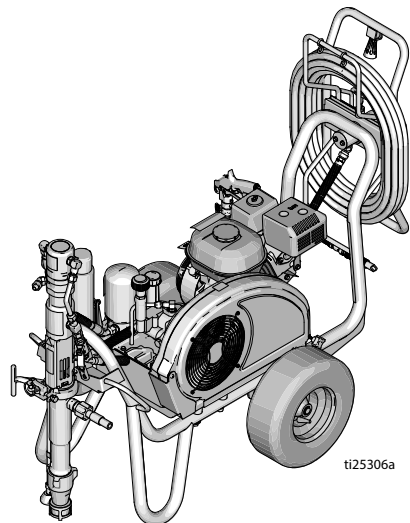
Save these instructions.

Related Manuals:

308491	DutyMax DH/GH230 Gun	334654	Pump
309495	DutyMax GH300 Gun	310812	Electric Motor



Standard Series



ProContractor Series

Use only genuine Graco replacement parts.

The use of non-Graco replacement parts may void warranty.

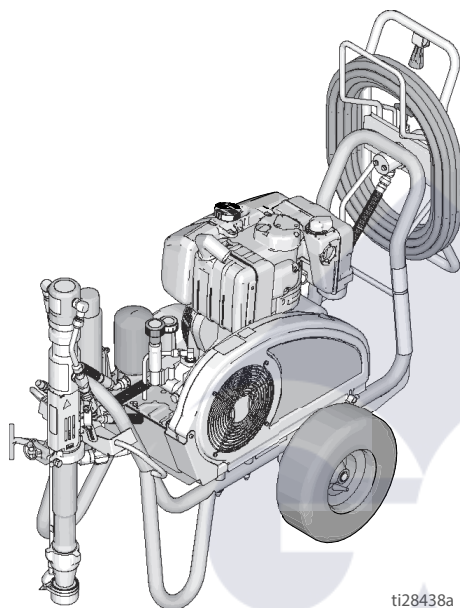


Table of Contents

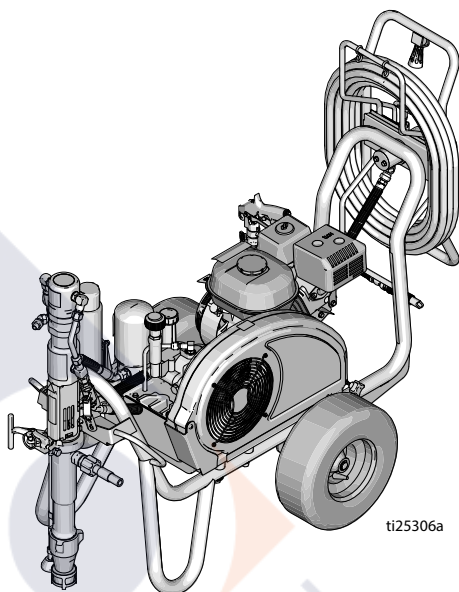
Models	3
Electric Motor Kit Options	3
OEM Kits	3
Warnings	4
Electric Motor Warnings	4
Internal Combustion Engine Warnings	7
Electric Motor/Internal Combustion Engine Warnings	8
Component Identification	11
Standard Models (EH/GH230, 300 HD)	11
ProContractor Models (EH/GH230, 300 HD)	12
ProContractor Model (DH230 HD)	13
Grounding	14
Grounding Procedure for Gas Engine	14
Grounding Procedure for Electric Motor	14
Grounding of Pails	15
Circuit Protection	15
Setup	16
Change Engine or Motor	16
Complete Setup	17
Pressure Relief Procedure	19
Startup (Internal Combustion Models)	20
Startup (Electric Models)	23
How to Spray	25
Switch Tip™ and Guard Assembly	25
Spray	25
Clear Tip Clogs	26
Hose Reel	26
Clean Up	27
Maintenance	29
Troubleshooting	31
Standard Series Pump	33
ProContractor Series Pump	34
DutyMax EH/GH230/300 HD Standard Series Parts	37
DutyMax DH230/EH/GH230/300 HD ProContractor Series	49
Technical Data	64
DutyMax EH230 HD Standard Series	64
DutyMax EH300 HD Standard Series	65
DutyMax GH230 HD Standard Series	66
DutyMax GH300 HD Standard Series	67
DutyMax EH230 HD ProContractor Series	68
DutyMax EH300 HD ProContractor Series	69
DutyMax DH230/GH230 HD ProContractor Series	70
DutyMax GH300 HD ProContractor Series	71
Graco Standard Warranty	75
Graco Information	76

DutyMax DH230/EH/GH230/300 HD

DutyMax DH230/EH/GH230/300 HD ProContractor Series





DutyMax DH230 HD

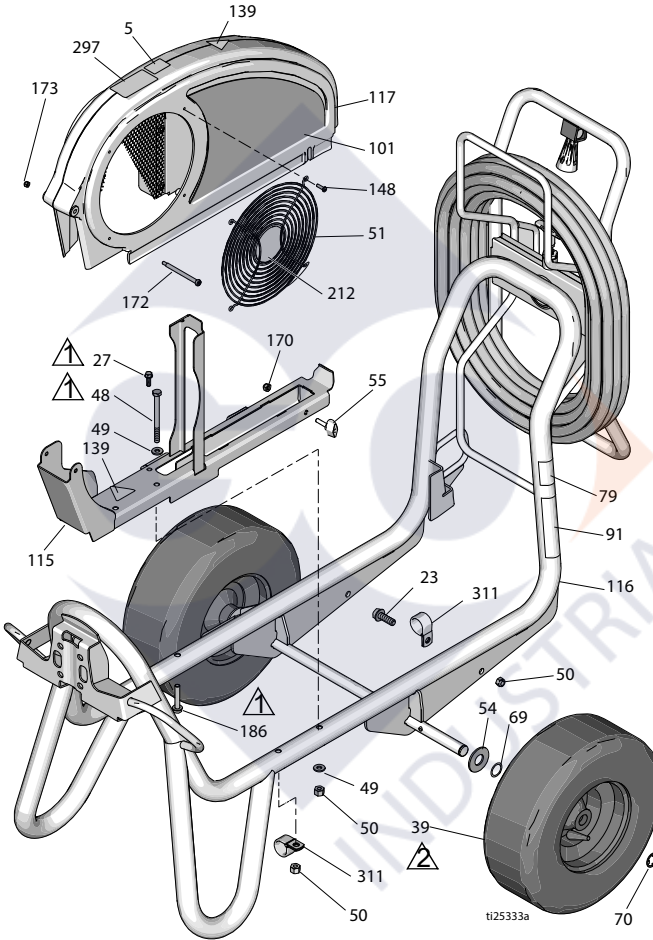


DutyMax EH/GH230/300 HD

DutyMax DH230/EH/GH230/300 HD

DH230/EH/GH230/300 HD Frame and Belt Guard Parts

Ref.	Torque	Ref.	Torque
	120-130 in-lb (13.6 - 14.7 N•m)		Inflate tires to 25-35 psi (1.7-2.4 bar)



Parts List


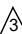

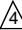
Ref.	Part	Description	Qty.	Ref.	Part	Description	Qty.
5	16D576	LABEL, made in USA with global component	1	17D044	LABEL, brand, side (GH230DI)	1	
23	110963	SCREW, cap, flange head	1	17D046	LABEL, brand, side (EH300DI)	1	
27	260212	SCREW, hex washer hd, thd form	1	17D048	LABEL, brand, side (GH300DI)	1	
39	119509	WHEEL, pneumatic	2	115	24M086	RAIL, belt guard, assy	1
48	867539	SCREW, cap, hex hd	2	116	17D108	FRAME, cart, weldment	1
49	100527	WASHER, plain	3	117	248973	GUARD, belt assembly, painted	1
50	110838	NUT, lock	2	139▲	16M768	LABEL, warning	2
51	117284	GRILL, fan guard	1	148	115477	SCREW, mach, torx pan hd	4
54	156306	WASHER, flat	2	170	102040	NUT, lock, hex	1
55	17D813	NUT, hand	1	172	119434	SCRWE, shoulder, skt hd	1
69	116038	WASHER, wave spring	2	173	116969	NUT, lock	1
70	120211	RING, retaining, e-ring	2	186	17D142	SCREW, hex washer hd	2
79▲	189246	LABEL, warning	1	212	16N398	LABEL, direction (EH/GH300DI)	1
91▲	194317	LABEL, warning, EN	1	297	17D033	LABEL, ProContractor	1
	16N948	LABEL, warning, ISO	1	311	128051	CLAMP	2
	17D947	LABEL, warning, multi-languages	1				
101	17D042	LABEL, brand, side (EH230DI)	1				
	17J339	LABEL, brand, side (DH230DI)	1				

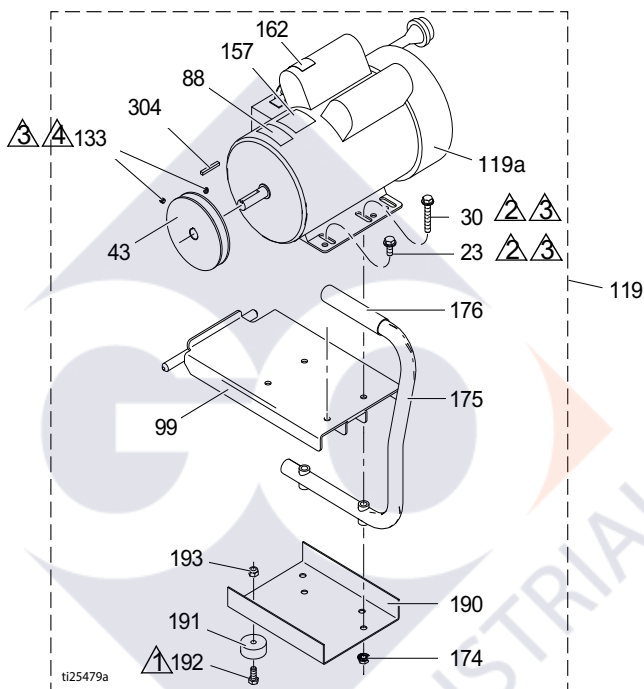
▲Danger and Warning labels are available at no cost

INDUSTRIAL

DutyMax DH230/EH/GH230/300 HD

DutyMax EH230 HD Electric Motor Parts

Ref.	Torque	Ref.	Torque
	26-30 in-lb (2.9 - 3.4 N•m)		Apply Loctite 242
	215-235 in-lb (24.3 - 26.6 N•m)		55-62 in-lb (6.7 - 7.0N•m)



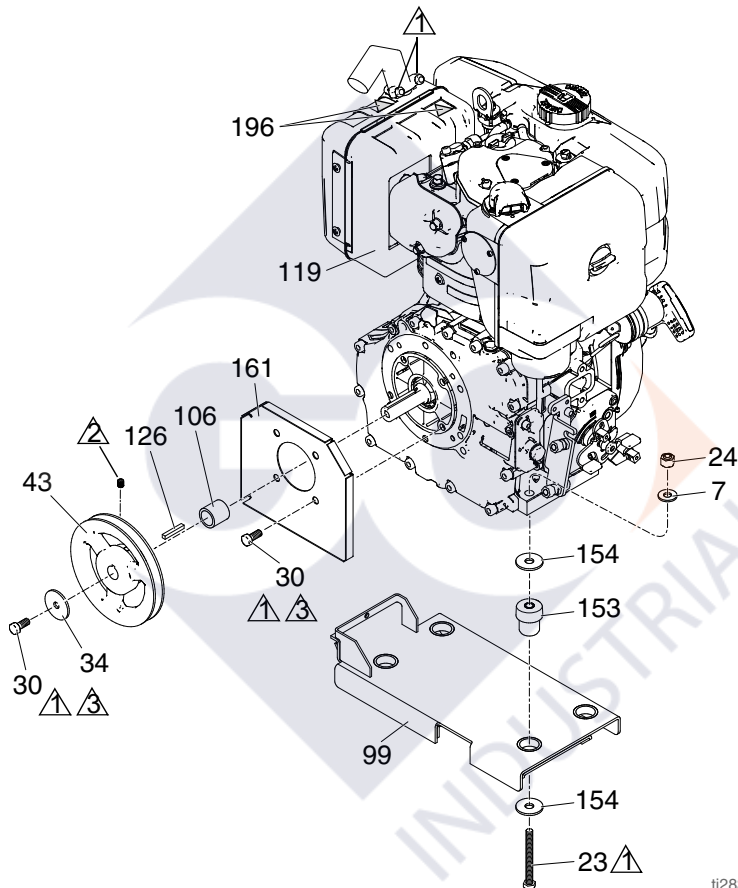
Ref.	Part	Description	Qty.	Ref.	Part	Description	Qty.
23	110963	SCREW, cap, flange head	2	133	100002	SCREW, set	2
30	114653	SCREW, cap, flange head	2	157	15B804	LABEL, Graco	2
43	15E588	PULLEY	1	162▲	189930	LABEL, warning	1
44	116914	BELT, V-Grip-notch (not shown)	1	174	110996	NUT, hex, flange head	4
88▲	15K616	LABEL, caution	1	175	246214	HANDLE, conversion	1
99	15E585	BRACKET, mounting, elec. motor	1	176	111700	GRIP, handle	1
119	248946	KIT, electric motor 3.0 hp (includes all parts listed on this page)	1	190	15F217	PLATE, isolator, bottom	1
119a	15E669	MOTOR, electric 3 HP, 230V AC	1	191	113817	BUMPER	4
				192	100057	SCREW, cap, hex hd nylock, 5/16	4
				193	111040	NUT, lock, insert, nylock, 5/16	4
				304	117632	KEY, square 3/16 x 1.25	1

▲Danger and Warning labels are available at no cost

DutyMax DH230/EH/GH230/300 HD

DutyMax DH230 HD Diesel Engine Parts

Ref.	Torque	Ref.	Torque
▲1	120-130 in-lb (13.6 - 14.7 N•m)	▲3	Apply Loctite 242
▲2	58-62 in-lb (6.6 - 7.0 N•m)	▲4	65-85 in-lb (7.3 - 9.6 N•m)



ti28390a

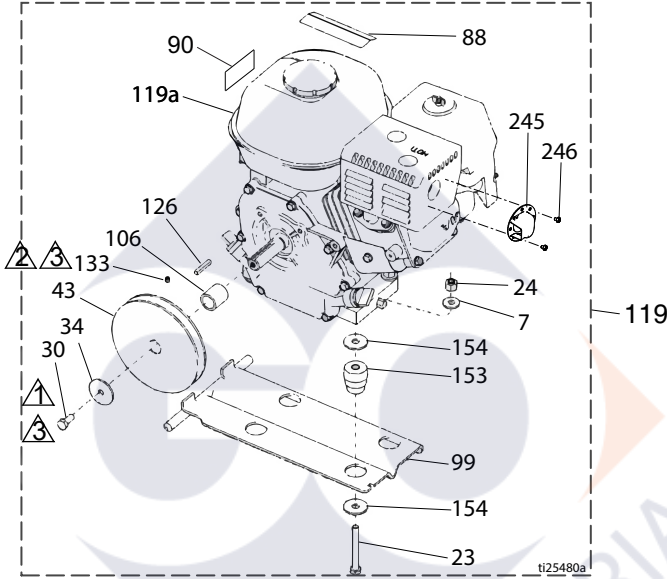
Ref.	Part	Description	Qty.	Ref.	Part	Description	Qty.
7	100023	WASHER, flat	4	126	17L826	KEY, square 3/16 x 1.125	1
23	110385	SCREW, cap, hex head	4	153	15E888	DAMPENER, engine mount	4
24	110838	NUT, lock	4	154	108851	WASHER, plain surface	8
30	108842	SCREW, cap, flange head	5	161	17K215	SHIELD, engine shaft	1
34	112717	WASHER	1	196▲	17K859	LABEL, safety, hot surface	2
43	17L825	PULLEY, 6 inch	1			BELT, V-Grip-notch (not shown)	1
99	17H148	BRACKET, mounting, engine, Diesel	1				
106	17L823	SLEEVE, engine shaft	1				
119	17H150	ENGINE, Diesel	1				

▲Danger and Warning labels are available at no cost

DutyMax DH230/EH/GH230/300 HD

DutyMax GH230 HD Gasoline Engine Parts

Ref.	Torque	Ref.	Torque
▲1	120-130 in-lb (13.6 - 14.7 N•m)	▲3	Apply Loctite 242
▲2	58-62 in-lb (6.6 - 7.0 N•m)		

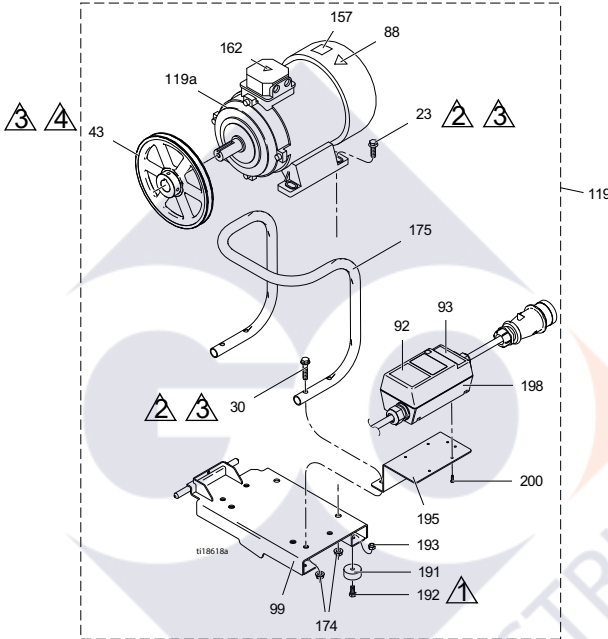


Ref.	Part	Description	Qty.	Ref.	Part	Description	Qty.
7	100023	WASHER, flat	4	119	248944	KIT, gas engine 6.5 hp (includes all parts listed on this page)	2
23	113664	SCREW, cap, hex hd	4	119a	116298	ENGINE, 6.5 gas	1
24	110838	NUT, lock	4	126	117632	KEY, square, 3/16 x 1.25	1
30	108842	SCREW, cap, hex hd	2	133	100002	SCREW, set	1
34	112717	WASHER	1	153	15E888	DAMPENER, motor mount	4
43	116908	PULLEY, 5.50 in.	1	154	108851	WASHER, plain	8
44	119433	BELT, V-Grip-notch (not shown)	1	245	128099	DEFLECTOR, exhaust	1
50	110838	NUT, lock	4	246	128101	SCREW, tapping	2
88▲	194126	LABEL, warning	1	▲Danger and Warning labels are available at no cost			
90▲	16Y720	LABEL, warning, ISO engine	1				
99	15F157	BRACKET, mounting, engine	1				
106	15B314	SLEEVE, motor shaft	1				

DutyMax DH230/EH/GH230/300 HD

DutyMax EH300 HD Electric Motor Parts

Ref.	Torque	Ref.	Torque
▲1	26-30 in-lb (2.9 - 3.4 N•m)	▲3	Apply Loctite 242
▲2	215-235 in-lb (24.3 - 26.6 N•m)	▲4	58-62 in-lb (6.6 - 7.0 N•m)



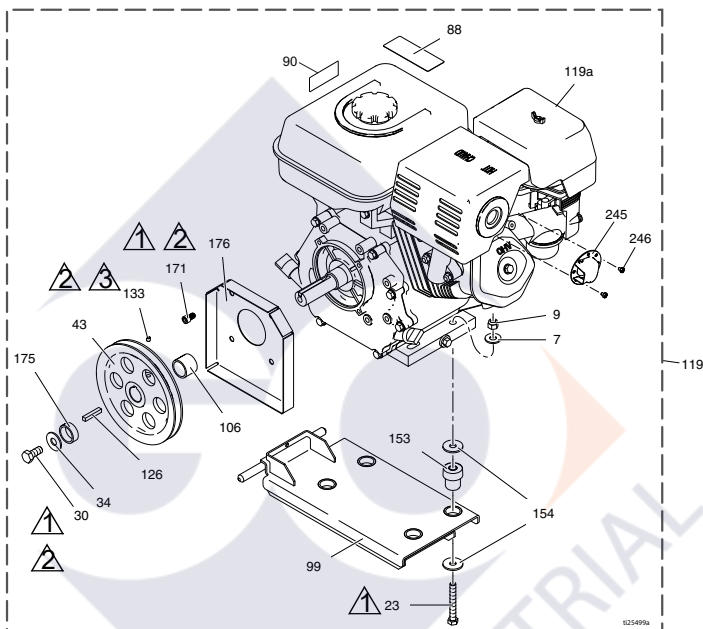
Ref.	Part	Description	Qty.	Ref.	Part	Description	Qty.
23	111193	SCREW, cap, flange head	4	162▲	189930	LABEL, caution	1
30	116780	SCREW, hex, hd, flanged	4	174	112958	NUT, hex, flanged	8
43	125811	PULLEY, cast iron, 8.75 in	1	175	16M473	TUBE, handle, conversion	1
88▲	15K616	LABEL, caution	1	191	113817	BUMPER	4
92	16N399	LABEL, motor switch box on-off	1	192	100057	SCREW, cap, hex hd	4
93	16N400	LABEL, red light indicator	1	193	111040	NUT, lock, insert, nylock, 5/16	4
99	16M467	BRACKET, mounting, motor, EH300	1	195	16M474	BRACKET, motor starter	1
119	24M669	KIT, motor (includes all parts listed on this page)	1	198	24N064	STARTER, motor assembly	1
119a	24N019	MOTOR, elec., 400 VAC, 50 Hz, 7.3 hp	1	200	119236	SCREW, plastite	4

▲Danger and Warning labels are available at no cost

DutyMax DH230/EH/GH230/300 HD

DutyMax GH300 HD Gasoline Engine Parts

Ref.	Torque	Ref.	Torque
▲1	120-130 in-lb (13.6 - 14.7 N•m)	▲3	58-62 in-lb (6.6 - 7.0 N•m)
▲2	Apply Loctite 242		

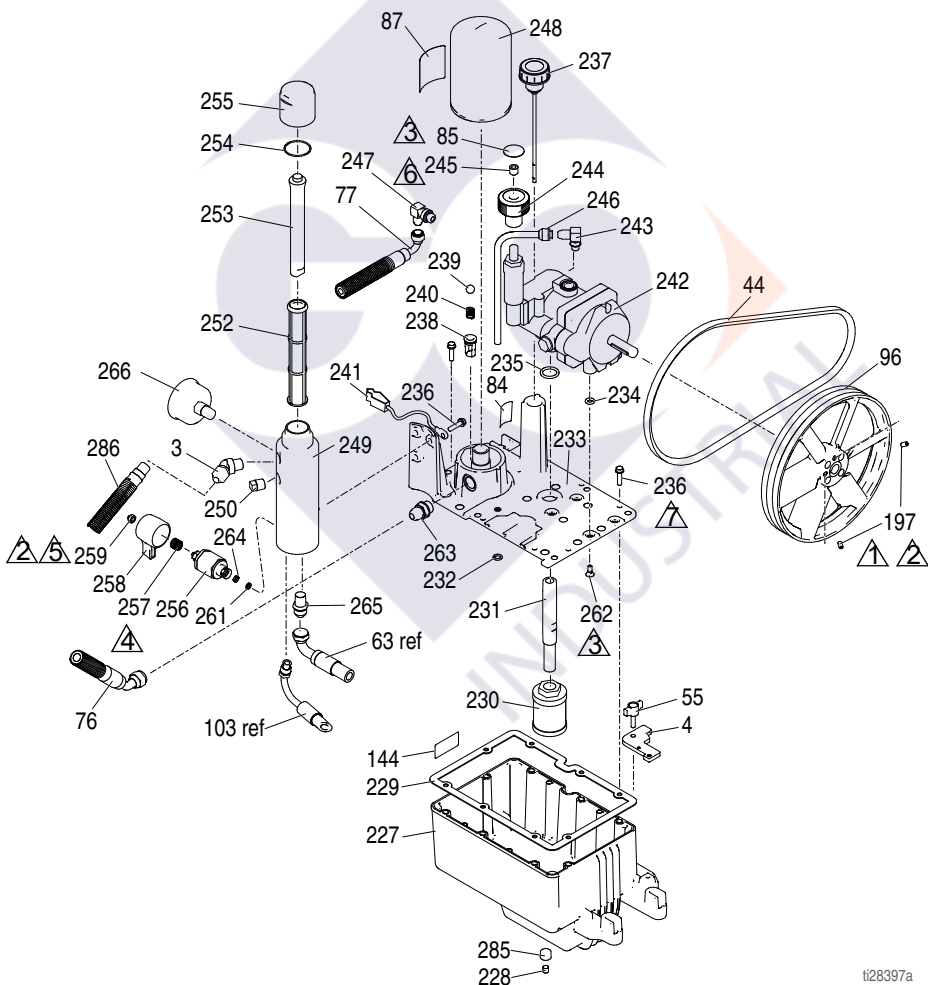


Ref.	Part	Description	Qty.	Ref.	Part	Description	Qty.
7	100132	WASHER, flat	4	119a	803900	ENGINE, gasoline, 9.0 hp (Honda)	1
	100023	WASHER, flat (Vanguard)	4		24P301	ENGINE, gasoline, 9.0 hp (China only)	1
9	110838	NUT, lock	4		248945V	ENGINE, gasoline, 10 hp (Vanguard, California compliant)	1
23	106212	SCREW, cap, hex hd	4		126	KEY, parallel, square	1
	113664	SCREW, cap, hex hd (Vanguard)	4		133	SCREW, set	1
30	116645	SCREW, cap, hex head	1		153	195515 DAMPENER, motor mount	4
34	100696	WASHER, wrought	1		15E888	DAMPENER, motor mount (Vanguard)	4
43	119401	PULLEY	1	154	108851	WASHER, plain	8
44	119432	BELT, V-Grip-notch (not shown)	1	171	C20010	SCREW, cap, socket head	4
88▲	194126	LABEL, warning	1	175	15E764	SPACER, shaft, engine	1
90▲	16Y720	LABEL, warning, ISO engine	1	176	15E973	SHIELD, engine shaft	1
99	15E583	BRACKET, mounting, engine	1	245	124145	DEFLECTOR, exhaust	1
106	15E586	SLEEVE, shaft, engine	1	246	128101	SCREW, tapping	3
119	248945	KIT, gas engine 9.0 hp (includes all parts listed on this page)	1	▲Danger and Warning labels are available at no cost			
119	25P354	KIT, gas engine 9.0 hp (China Only)	1				

DutyMax DH230/EH/GH230/300 HD

DutyMax Reservoir & Filter Parts

Ref.	Torque	Ref.	Torque
	58-62 in-lb (6.6 - 7.0 N•m)		15-25 in-lb (1.7 - 2.8 N•m)
	Apply Loctite 242		Apply Loctite 277
	90-110 in-lb (10.2 - 12.4 N•m)		110-120 in-lb (12.4 - 13.6 N•m)
	355-395 in-lb (40.1 - 44.6 N•m)		



t28397a





DutyMax Reservoir & Filter Parts List

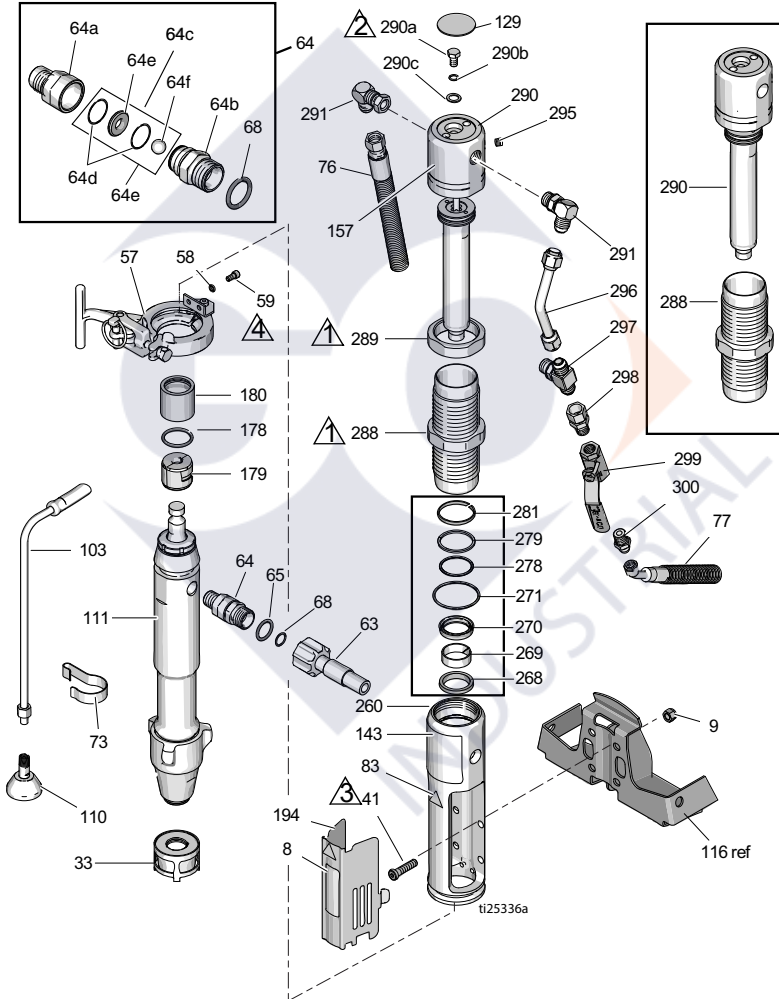
Ref.	Part	Description	Qty.	Ref.	Part	Description	Qty.
3	161889	FITTING, outlet	1	242	249003	PUMP, hydraulic	1
4	15E476	BRACKET, retainer, motor	1	246178	PUMP, hydraulic (DH230DI)	1	
44	116914	BELT, V, AX42 (EH230DI)	1	243	110792	FITTING, elbow, male, 90°	1
	119433	BELT, V, AX41 (GH230DI)		244	15B438	KNOB, pressure	1
	125834	BELT, V, AX48 (EH300DI)	1	245	117560	SCREW, set, socket head	1
	17L829	BELT, V, AX43 (DH230DI)	1	246	246167	TUBE, hydraulic, case drain	1
	119432	BELT, V, AX44 (GH300DI)	1	247	116829	FITTING, elbow, hydraulic	1
55	17D813	NUT, hand	1	248	246173	FILTER, oil, spin on	1
84	198585	LABEL, hydraulic fluid, GH	1	249	15E599	HOUSING, filter	1
85	15A464	LABEL, control	1	250	15G331	PLUG, pipe	1
87	189892	LABEL, Graco	1	252	244067	FILTER, fluid	1
96	15E410	PULLEY, fan	1	253	15C766	TUBE, diffusion	1
144	15K440	LABEL, brand, GH/EH cooling	1	254	117285	PACKING, o-ring	1
				255	15C765	CAP, filter	1
197	120087	SCREW, set, 1/4 x 1/2	2	256*	287879	VAVLE, drain, assy	1
227	15J513	TANK, reservoir, blue	1	257*	114708	SPRING, comp	1
228	101754	PLUG, pipe	1	258*	15G563	HANDLE, valve	1
229	120604	GASKET, reservoir	1	259*	116424	NUT, cap	1
230	116919	FILTER	1	261*	193710	SEAL, seat, valve	1
231	15E587	TUBE, suction	1	262	117471	SCREW, mach, hex flat head	4
232	154594	PACKING, o-ring	1	263	120184	FITTING, hydraulic	1
233	15M056	COVER, reservoir	1	264*	193709	SEAT, valve	1
234	107188	PACKING, o-ring	1	265	121311	FITTING, connector	1
235	156401	PACKING, o-ring	4	266	868015	GAUGE	1
236	119426	SCREW, mach, hex washer hd	11	285	116618	MAGNET	1
237	120726	CAP, breather, filter	1	286	17D266	HOSE, coupled, 3/8 x 73.5	1
238	198841	RETAINER, ball, pressure bypass	1	299	290079	LABEL, ground warning, English	1
239	100084	BALL, metallic	1		16Y633	LABEL, ground warning, Chinese	1
240	116967	SPRING, compression	1				
241	237686	WIRE, ground assembly w clamp	1				

* Included in Drain Valve Kit 245103

DutyMax DH230/EH/GH230/300 HD

Hydraulic Motor & Displacement Pump Parts

Ref.	Torque	Ref.	Torque
	145-155 ft-lb (196.6 - 210.2 N•m)		140-160 in-lb (15.8 - 18.1 N•m)
	12-18 ft-lb (16.3 - 24.4 N•m)		90-110 in-lb (10.2 - 12.4 N•m)



DutyMax DH230/EH/GH230/300 HD

Hydraulic Motor & Displacement Pump Parts List

Ref.	Part	Description	Qty.	Ref.	Part	Description	Qty.
8	15F584	LABEL, ProConnect	1	157◆	15B804	LABEL, Graco	2
9	101566	NUT, lock	4	178	156698	PACKING, o-ring	1
33	15V573	STRAINER		179	277377	COUPLER, pump	2
41◆	107210	SCREW	4	180	15H957	COVER, coupler	1
57	288344	CLAMP, pump	1	194	16M749	COVER, shield	1
58	105510	WASHER, lock, spring (hi-collar)	2	260◆	15J279	MANIFOLD, adapter	1
59	101550	SCREW, cap	2	268◆+	117739	WIPER, rod	1
63	257908	HOSE, coupled	1	269◆+	112342	BEARING, rod	1
64	24M611	KIT, check valve (includes 64a -64f)	1	270◆+	112561	PACKING, block	1
64a	16N461	HOUSING, seat, check valve	1	271◆+	117283	PACKING, o-ring	1
64b	16N462	HOUSING, ball, check valve	1	278◆+	108014	PACKING, o-ring	1
64c	24M725	KIT, repair, check valve (includes 64d, 64e, 64f, 68)	1	279◆+	178226	SEAL, piston	1
64d*		O-RING	2	281◆+	178207	BEARING, piston	1
64e*		SEAT, valve	1	288◆	248991	SLEEVE, hydraulic, cylinder	1
64f*		BALL, ceramic	1	289◆	15A726	NUT, jam	1
65	109450	PACKING, o-ring	1	290◆	288737	KIT, repair, Trip Rod (includes 129, 278, 279, 281, 282, 295)	1
68*	C20195	PACKING, o-ring	1	290a◆	106276	SCREW, cap, hex head	1
73	198542	CLIP, spring	1	290b◆	155685	PACKING, o-ring	1
76	15K642	HOSE, hydraulic, return	1	290c◆	178179	WASHER, sealing	1
77	15K641	HOSE, hydraulic, supply	1	291◆	117607	FITTING, elbow std thd	2
83▲◆	15H108	LABEL, warning	1	295◆	100139	PLUG, pipe	1
103	243993	HOSE, drain, Ultra hi-boy	1	296◆	15E596	TUBE, hydraulic, supply	1
110	241920	DEFLECTOR, threaded	1	297◆	117609	FITTING, tee, branch, str thd	1
111	24X001	PUMP, displacement	1	298	117328	FITTING, nipple, straight	1
129◆▲	15B063	LABEL, warning, hot surface	1	299	117441	VALVE, ball	1
143		LABEL, brand, front	1	300	116813	FITTING, nipple, hydraulic	1
	17J340	(DH230DI)	1				
	17D061	(EH230DI)	1				
	17D063	(GH230DI)	1				
	17D065	(EH300DI)	1				
	17D067	(GH300DI)	1				

▲ *Danger and Warning labels are available at no cost*

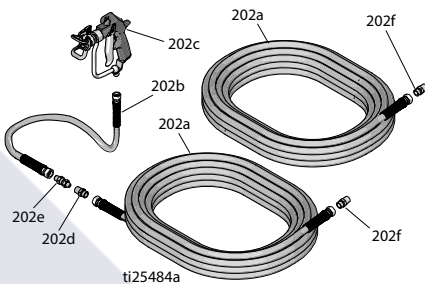
◆ *Included in Hydraulic Motor Repair Kit, 288760*
+ *Included in Seal Kit 246174*

* *Included in Check Valve Repair Kit 24M725*

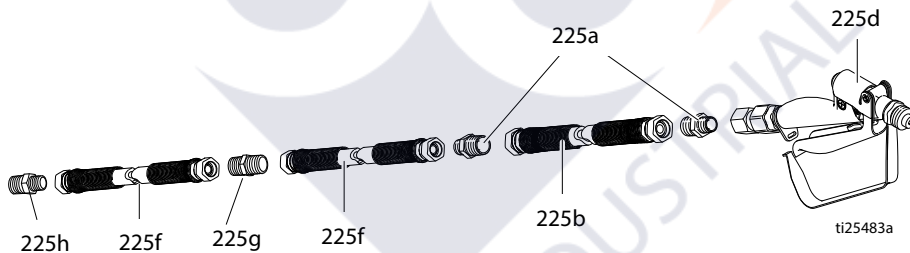
DutyMax DH230/EH/GH230/300 HD

DutyMax DH/EH/GH230 HD Sprayer - Spray Gun & Hose

Ref.	Part No.	Description	Qty.
202a	240797	HOSE, grounded, nylon; 3/8 in. ID; cpld 3/8-18 npsm; 50 ft (15 m); spring guards both ends	2
202b	241735	HOSE, grounded, nylon; 1/4 in. ID; cpld 1/4 npt(m) x 1/4 npsm(f); 3 ft (0.9m); spring guards both ends 3300 psi (227 bar, 22.7 MPa)	1
202c	241705	GUN, spray, texture, Includes RAC® Tip Guard and LTX531 Spray Tip Cylinder, See 308491 for parts	1
202d	159841	ADAPTER, 3/8 x 1/4 in. npt	1
202e	189018	SWIVEL, straight	1
202f	162485	ADAPTER, nipple	2




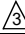
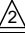

DutyMax EH/GH™ 300 HD Sprayer - Spray Gun and Hose

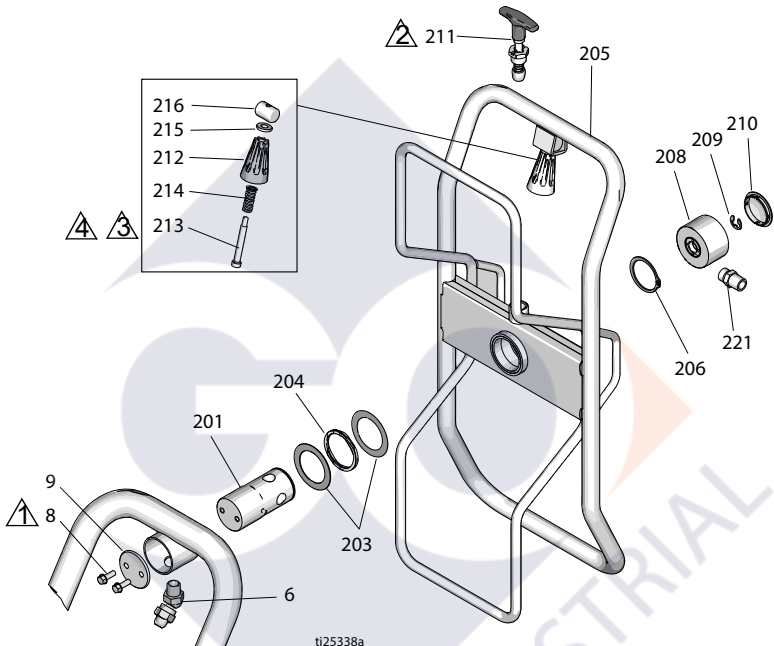


Ref.	Part No.	Description	Qty.
225a	159239	FITTING, nipple, pipe, rdcg	3
225b	191239	HOSE, cpld, 3/8 in. x 11 ft 10 in.	1
225d	245820	KIT, accessory, gun	1
225f	278499	HOSE, cpld, 1/2 in. x 50 ft, 3300 wp	2
225g	158491	FITTING, nipple	1
225h	159239	FITTING, nipple	1

DutyMax DH230/EH/GH230/300 HD

ProContractor Series Only Hose Reel Parts

Ref.	Torque	Ref.	Torque
	120-130 in-lb (13.6 - 14.7 N•m)		130-150 in-lb (14.7 - 16.9 N•m)
	25-35 ft-lb (33.9 - 47.5 N•m)		Apply Loctite 277



ti25338a

Ref.	Part	Description	Qty.	Ref.	Part	Description	Qty.
6	161889	FITTING, union swivel 45°	1	211	24E400	PIN, pop, lock out	1
8	260212	SCREW, hex washer hd	2	212	278085	HANDLE, swivel	1
9	16C975	PLATE, pivot mount	1	213	122518	SCREW, shoulder, sch	1
201	24E016	TUBE, hose reel, pivot	1	214	122542	SPRING	1
203	122607	WASHER, flat	1	215	122669	WASHER, flat	1
204	122534	SPRING, wave	1	216	15X618	NUT, swivel, handle	1
205	24B691	REEL, hose	1	221	162485	ADAPTER (models 24W942, 24W962, DH230DI)	1
206	122524	RING, retaining, external	1	116756	ADAPTER (models 24W966, 24W968)	1	
208	24B248	CAP, swivel, complete	1	159239	ADAPTER (models 24W966, 24W968)	1	
209	122347	RING, retaining, external	1				
210	122787	CAP	1				

Graco Standard Warranty

Graco warrants all equipment referenced in this document which is manufactured by Graco and bearing its name to be free from defects in material and workmanship on the date of sale to the original purchaser for use. With the exception of any special, extended, or limited warranty published by Graco, Graco will, for a period of twelve months from the date of sale, repair or replace any part of the equipment determined by Graco to be defective. This warranty applies only when the equipment is installed, operated and maintained in accordance with Graco's written recommendations.

This warranty does not cover, and Graco shall not be liable for general wear and tear, or any malfunction, damage or wear caused by faulty installation, misapplication, abrasion, corrosion, inadequate or improper maintenance, negligence, accident, tampering, or substitution of non-Graco component parts. Nor shall Graco be liable for malfunction, damage or wear caused by the incompatibility of Graco equipment with structures, accessories, equipment or materials not supplied by Graco, or the improper design, manufacture, installation, operation or maintenance of structures, accessories, equipment or materials not supplied by Graco.

This warranty is conditioned upon the prepaid return of the equipment claimed to be defective to an authorized Graco distributor for verification of the claimed defect. If the claimed defect is verified, Graco will repair or replace free of charge any defective parts. The equipment will be returned to the original purchaser transportation prepaid. If inspection of the equipment does not disclose any defect in material or workmanship, repairs will be made at a reasonable charge, which charges may include the costs of parts, labor, and transportation.

THIS WARRANTY IS EXCLUSIVE, AND IS IN LIEU OF ANY OTHER WARRANTIES, EXPRESS OR IMPLIED, INCLUDING BUT NOT LIMITED TO WARRANTY OF MERCHANTABILITY OR WARRANTY OF FITNESS FOR A PARTICULAR PURPOSE.

Graco's sole obligation and buyer's sole remedy for any breach of warranty shall be as set forth above. The buyer agrees that no other remedy (including, but not limited to, incidental or consequential damages for lost profits, lost sales, injury to person or property, or any other incidental or consequential loss) shall be available. Any action for breach of warranty must be brought within two (2) years of the date of sale.

GRACO MAKES NO WARRANTY, AND DISCLAIMS ALL IMPLIED WARRANTIES OF MERCHANTABILITY AND FITNESS FOR A PARTICULAR PURPOSE, IN CONNECTION WITH ACCESSORIES, EQUIPMENT, MATERIALS OR COMPONENTS SOLD BUT NOT MANUFACTURED BY GRACO. These items sold, but not manufactured by Graco (such as electric motors, switches, hose, etc.), are subject to the warranty, if any, of their manufacturer. Graco will provide purchaser with reasonable assistance in making any claim for breach of these warranties.

In no event will Graco be liable for indirect, incidental, special or consequential damages resulting from Graco supplying equipment hereunder, or the furnishing, performance, or use of any products or other goods sold hereto, whether due to a breach of contract, breach of warranty, the negligence of Graco, or otherwise.

FOR GRACO CANADA CUSTOMERS

The Parties acknowledge that they have required that the present document, as well as all documents, notices and legal proceedings entered into, given or instituted pursuant hereto or relating directly or indirectly hereto, be drawn up in English. Les parties reconnaissent avoir convenu que la rédaction du présente document sera en Anglais, ainsi que tous documents, avis et procédures judiciaires exécutés, donnés ou intentés, à la suite de ou en rapport, directement ou indirectement, avec les procédures concernées.

Graco Information

For the latest information about Graco products, visit www.graco.com.

For patent information, see www.graco.com/patents.

TO PLACE AN ORDER, contact your Graco distributor or call 1-800-690-2894 to identify the nearest distributor.



All written and visual data contained in this document reflects the latest product information available at the time of publication.

Graco reserves the right to make changes at any time without notice.

Original instructions. This manual contains English. MM 334606

Graco Headquarters: Minneapolis

International Offices: Belgium, China, Japan, Korea

GRACO INC. AND SUBSIDIARIES • P.O. BOX 1441 • MINNEAPOLIS MN 55440-1441 • USA

Copyright 2014, Graco Inc. All Graco manufacturing locations are registered to ISO 9001.

www.graco.com

Revision J, August 2022