

**RUPES®**



# Catalogue 2024



Ed. 1 - 2024



**INNOVATION  
TECHNOLOGY  
DESIGN**

# Catalogue 2024

Ed. 1 - 2024

## INDEX

<b>Company Profile</b>	<b>2</b>
<b>1. ELECTRIC &amp; iBRID TOOLS</b>	<b>4</b>
1.1 Grinders	
1.2 Polishers / Sanders	
1.3 Polishers	
1.4 BigFoot polishers	
1.5 Sanders	
1.6 Edge trimmers	
1.7 Glazing machines	
<b>2. PNEUMATIC TOOLS</b>	<b>54</b>
2.1 Sanders	
2.2 Polishers	
<b>3. CONSUMABLES AND ACCESSORIES</b>	<b>66</b>
3.1 Sanding backing pads	
3.2 Polishing backing pads	
3.3 Polishing pads	
3.4 Polishing Compounds	
3.5 Residue remover	
3.6 Car Care Products	
3.7 Accessories	
3.8 Abrasives	
<b>4. DUST EXTRACTION SYSTEMS</b>	<b>128</b>
4.1 Air purifiers standard	
4.2 Air purifiers 4.0	
4.3 Mobile units standard	
4.4 Mobile units 4.0	
4.5 Matic Systems	
4.6 Vacuum towers	
4.7 Turbines centralized units standard	
4.8 Turbines centralized units 4.0	
4.9 Terminals	
4.10 ATEX	
4.11 ATEX 4.0	
4.12 Vacuum cleaners, prefilters and terminals ATEX	
4.13 Cleaning machines	
4.14 Accessories	



## **RUPES**

Realizzazione Utensili Pneumatici Elettrici Speciali, since 1947

Our history is composed of achievements, challenges, ideas, and international successes. The constant commitment to research and development, aimed at constantly improving the performance of each product, is one of the fundamental aspects that during our 75 years of history have contributed to affirm RUPES as one of the major successful brands in the field of professional tools.

The focus on designing and manufacturing products that are in total compliance with health and safety regulations, offering enhanced worker comfort, and providing innovative solutions are at the core of each new idea.

With four production sites and a well - established sales network, RUPES is always close to customers and provides them with products that anticipate and respond quickly to the market needs. The brand has complete coverage of all the main international markets, bringing its systems all over the world thanks to a distribution network consisting of two direct branches and numerous authorized dealers.



## MISSION & VISION

Making tomorrow a safer place

Designing, manufacturing and distributing innovative and reliable solutions in the professional tool market, with particular emphasis on electric tools, pneumatic tools, low voltage tools, and dust extraction systems to improve the quality of life and work.

Researching and creating solutions to simplify work and increase performance, enhancing both productivity and worker comfort while increasing safety. We design tools that change the way people work, helping professionals to work better, faster, and more effectively.

Improving work quality and simplifying tasks through creativity and innovation is our primary skill. We know that the satisfaction of a job well done is something less.

We work hard allowing you to work better. Passion for what we do, on - going research through leading - edge technologies, and commitment to our customers demands are the inspirations that show us the way towards the future.

3.

# CONSUMABLES AND ACCESSORIES



### 3. CONSUMABLES AND ACCESSORIES

## 3.1 Sanding backing pads

For iBrid Nano polisher



### Polishing backing pads Ø30 mm - Ø1.25"

For iBrid Nano

<b>CODE</b>	<b>995.001 /C</b>
<b>Interface</b>	Velcro
<b>Holes</b>	-
<b>Hardness</b>	Hard
<b>Tool</b>	iBrid Nano
<b>Fitting</b>	M8
<b>Unit</b>	1



### Sanding backing pads Ø30 mm - Ø1.25"

For iBrid Nano

<b>CODE</b>	<b>997.001 /C</b>
<b>Interface</b>	Adhesive
<b>Holes</b>	-
<b>Hardness</b>	Soft
<b>Tool</b>	iBrid Nano
<b>Fitting</b>	M8
<b>Unit</b>	1



### Polishing backing pads Ø50mm - Ø2"

For iBrid Nano

<b>CODE</b>	<b>996.001 /C</b>
<b>Interface</b>	Velcro
<b>Holes</b>	-
<b>Hardness</b>	Hard
<b>Tool</b>	iBrid Nano
<b>Fitting</b>	M8
<b>Unit</b>	1

### 3. CONSUMABLES AND ACCESSORIES

## 3.1 Sanding backing pads

For iBrid Nano sander Q-Mag



### Sanding backing pads Ø Delta

For Q - MAG

CODE	981.393
------	---------

Interface	Velcro
Holes	-
Hardness	-
Tool	Q - MAG
Fitting	Magnetico
Unit	1



### Sanding backing pads Ø75mm - Ø3"

For Q - MAG

CODE	983.393
------	---------

Interface	Velcro
Holes	-
Hardness	-
Tool	Q - MAG
Fitting	Magnetico
Unit	1





### 3.1 Sanding backing pads



#### Sanding backing pads Ø30mm - Ø1.25"

For LD30 - LD32

CODE	9P06.060	9P06.061
Interface	Adhesive	Velcro
Holes	-	-
Hardness	Hard	Hard
Tool	LD30 - 32	LD30 - 32
Fitting	M10	M10
Unit	1	1



#### Sanding backing pads Ø30mm - Ø1.25"

For LD30 - LD32

CODE	9P06.062
Interface	Vel/Adh
Holes	-
Hardness	Soft
Tool	LD30 - 32
Fitting	M10
Unit	1



#### Sanding backing pads Ø50mm - Ø2"

For TA11 - TA50

CODE	9P01.046
Interface	Velcro
Holes	-
Hardness	Hard
Tool	TA11 - TA50
Fitting	M6
Unit	1



#### Sanding backing pads Ø50mm - Ø2"

For ROC50

CODE	9P23.024
Interface	Roloc
Holes	-
Hardness	-
Tool	ROC50
Fitting	1/4"F
Unit	1

### 3.1 Sanding backing pads



#### Sanding backing pads Ø75mm - Ø3"

For TA11 - TA50

CODE	9P01.055
------	----------

Interface	Velcro
Holes	-
Hardness	Hard
Tool	TA11 - TA50
Fitting	M6
Unit	1



#### Sanding backing pads Ø75mm - Ø3"

For ROC75

CODE	9P24.024
------	----------

Interface	Roloc
Holes	-
Hardness	-
Tool	ROC75
Fitting	1/4"F
Unit	1

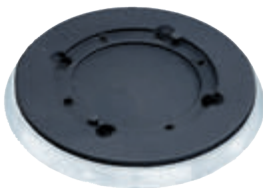


#### Sanding backing pads Ø75mm - Ø3"

For RA75 - RA75A

CODE	990.003	990.012
------	---------	---------

Interface	Velcro	Velcro
Holes	-	3
Hardness	Soft	Soft
Tool	RA75	RA75A
Fitting	5/16"	5/16"
Unit	1	1



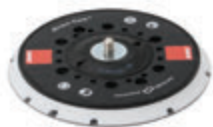
#### Sanding backing pads Ø125mm - Ø5"

For LR71 - HSE73

CODE	980.046
------	---------

Interface	Velcro
Holes	8 + 8 + 1
Hardness	Hard
Tool	LR71 - HSE73
Fitting	6 Viti
Unit	1

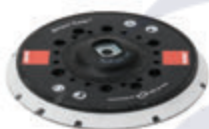
### 3.1 Sanding backing pads



#### Sanding backing pads Ø125mm - Ø5"

For RX2 - RA150

CODE	980.060	980.060/48
Interface	Velcro	Velcro
Holes	8 + 8 + 1	8 + 8 + 1
Hardness	Hard	Hard
Tool	RX2 - RA150	RX2 - RA150
Fitting	5/16"	5/16"
Unit	1	48



#### Sanding backing pads Ø125mm - Ø5"

For ER - RH - BR

CODE	980.050	980.050/48
Interface	Velcro	Velcro
Holes	8 + 8 + 1	8 + 8 + 1
Hardness	Hard	Hard
Tool	ER - RH - BR	ER - RH - BR
Fitting	M8	M8
Unit	1	48



#### Sanding backing pads Ø125mm - Ø5"

For ER - RH

CODE	980.015N	980.015N/48	980.035N
Interface	Velcro	Velcro	Velcro
Holes	8 + 8 + 1	8 + 8 + 1	MULTIHOLES
Hardness	Hard	Hard	Hard
Tool	ER - RH	ER - RH	ER - RH
Fitting	M8	M8	M8
Unit	1	48	1



#### Sanding backing pads Ø150mm - Ø6"

For AK - BK - EK - TK

CODE	981.100
Interface	Velcro
Holes	6 + 8 + 1
Hardness	Hard
Tool	AK - BK - EK - TK
Fitting	6 Viti
Unit	1

### 3.1 Sanding backing pads



#### Sanding backing pads Ø150mm - Ø6"

For RX2 - RA

CODE	981.408	981.408/48
Interface	Velcro	Velcro
Holes	8 + 8 + 1	8 + 8 + 1
Hardness	Hard	Hard
Tool	RX2 - RA	RX2 - RA
Fitting	5/16"	5/16"
Unit	1	48



#### Sanding backing pads Ø150mm - Ø6"

For ER - RH - BR

CODE	981.308N	981.308N/48
Interface	Velcro	Velcro
Holes	8 + 8 + 1	8 + 8 + 1
Hardness	Hard	Hard
Tool	ER - RH - BR	ER - RH - BR
Fitting	M8	M8
Unit	1	48



#### Sanding backing pads Ø150mm - Ø6"

For BR - TA - RA

CODE	981.253	981.253/48
Interface	Velcro	Velcro
Holes	6 + 1	6 + 1
Hardness	Hard	Hard
Tool	BR - TA - RA	BR - TA - RA
Fitting	5/16"	5/16"
Unit	1	48



#### Sanding backing pads Ø150mm - Ø6"

For ER - RH - BR

CODE	981.340N	981.340N/48
Interface	Velcro	Velcro
Holes	MULTIHOLES	MULTIHOLES
Hardness	Hard	Hard
Tool	ER - RH - BR	ER - RH - BR
Fitting	M8	M8
Unit	1	48

### 3. CONSUMABLES AND ACCESSORIES

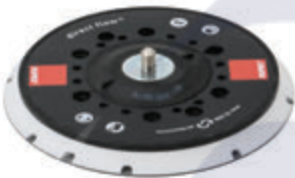
## 3.1 Sanding backing pads



### Sanding backing pads Ø150mm - Ø6"

For ER - RH - BR

CODE	981.500	981.500/48
<b>Interface</b>	Velcro	Velcro
<b>Holes</b>	MULTIHOLES	MULTIHOLES
<b>Hardness</b>	Hard	Hard
<b>Tool</b>	ER - RH - BR	ER - RH - BR
<b>Fitting</b>	M8	M8
<b>Unit</b>	1	48



### Sanding backing pads Ø150mm - Ø6"

For RX2 - RA150 - BR

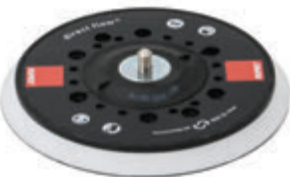
CODE	981.600	981.600/48
<b>Interface</b>	Velcro	Velcro
<b>Holes</b>	MULTIHOLES	MULTIHOLES
<b>Hardness</b>	Hard	Hard
<b>Tool</b>	RX2 - RA150 - BR	RX2 - RA150 - BR
<b>Fitting</b>	5/16"	5/16"
<b>Unit</b>	1	48



### Sanding backing pads Ø150mm - Ø6"

For ER - RH - BR

CODE	981.550	981.550/48
<b>Interface</b>	Velcro	Velcro
<b>Holes</b>	MULTIHOLES	MULTIHOLES
<b>Hardness</b>	Hard	Hard
<b>Tool</b>	ER - RH - BR	ER - RH - BR
<b>Fitting</b>	M8	M8
<b>Unit</b>	1	48

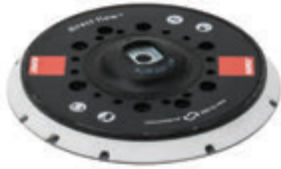


### Sanding backing pads Ø150mm - Ø6"

For RX2 - RA150 - BR

CODE	981.650	981.650/48
<b>Interface</b>	Velcro	Velcro
<b>Holes</b>	MULTIHOLES	MULTIHOLES
<b>Hardness</b>	Hard	Hard
<b>Tool</b>	RX2 - RA150 - BR	RX2 - RA150 - BR
<b>Fitting</b>	5/16"	5/16"
<b>Unit</b>	1	48

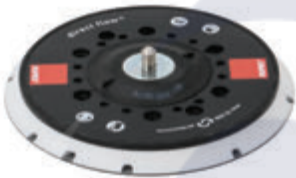
## 3.1 Sanding backing pads

**NEW**


### Extra Grip Sanding backing pads Ø150mm - Ø6"

For ER - RH - BR

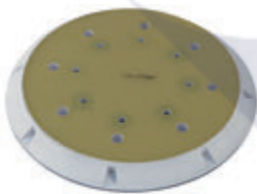
CODE	981.510	981.510/48
Interface	Velcro	Velcro
Holes	MULTIHOLES	MULTIHOLES
Hardness	Hard	Hard
Tool	ER - RH - BR	ER - RH - BR
Fitting	M8	M8
Unit	1	48



### Extra Grip Sanding backing pads Ø150mm - Ø6"

For RX2 - RA150 - BR

CODE	981.610	981.610/48
Interface	Velcro	Velcro
Holes	MULTIHOLES	MULTIHOLES
Hardness	Hard	Hard
Tool	RX2 - RA150 - BR	RX2 - RA150 - BR
Fitting	5/16"	5/16"
Unit	1	48



### Sanding backing pads Ø200mm - Ø7,87"

For AK - BK - EK - TK

CODE	912.279	912.279H
Interface	Velcro	Velcro
Holes	8	8 + 1
Hardness	Hard	Hard +
Tool	AK - BK - EK - TK	AK - BK - EK - TK
Fitting	8 Viti	8 Viti
Unit	1	1



### Sanding backing pads Ø200mm - Ø7,87"

For LH

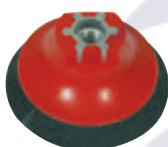
CODE	86.098
Interface	Velcro
Holes	-
Hardness	Mousse
Tool	LH
Fitting	M14
Unit	1

## 3.2 Polishing backing pads

**Polishing backing pads for rotary Ø75mm - Ø3"**

For LH75P

CODE	9P08.060
Interface	Velcro
Holes	-
Hardness	Hard
Tool	LH75P
Fitting	5/16"
Unit	1

**Polishing backing pads for rotary Ø75mm - Ø3"**

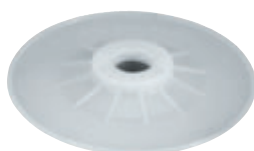
For FR - LH

CODE	990.015
Interface	Velcro
Holes	-
Hardness	Hard
Tool	FR - LH
Fitting	M14
Unit	1

**Polishing backing pads for rotary Ø75mm - Ø3"**

For LH76P

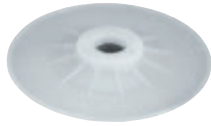
CODE	9P26.058
Interface	Velcro
Holes	-
Hardness	Hard
Tool	LH76P
Fitting	3/8"
Unit	1

**Polishing backing pads for rotary Ø100mm - Ø4"**

For BA

CODE	923.91
Interface	Fibre disc
Holes	22mm
Hardness	-
Tool	BA
Fitting	M14
Unit	1

## 3.2 Polishing backing pads



### Polishing backing pads for rotary Ø115mm - Ø4,5"

For BA

CODE	92.91
Interface	Fibre disc
Holes	22mm
Hardness	-
Tool	BA
Fitting	M14
Unit	1



### Polishing backing pads for rotary Ø125mm - Ø5"

For LH

CODE	992.500
Interface	Velcro
Holes	-
Hardness	-
Tool	LH
Fitting	M14
Unit	1



### Polishing backing pads for rotary Ø150mm - Ø6"

For LH

CODE	992.600
Interface	Velcro
Holes	-
Hardness	Hard
Tool	LH
Fitting	M14
Unit	1



### Polishing backing pads for rotary Ø165mm - Ø6,4"

For LH

CODE	992.650
Interface	Velcro
Holes	-
Hardness	Hard
Tool	LH
Fitting	M14
Unit	1



### 3.2 Polishing backing pads



#### Polishing backing pads for rotary Ø125mm - Ø5" (USA)

For LH

<b>CODE</b>	<b>982.500</b>
<b>Interface</b>	Velcro
<b>Holes</b>	-
<b>Hardness</b>	Hard
<b>Tool</b>	LH
<b>Fitting</b>	5/8"
<b>Unit</b>	1



#### Polishing backing pads for rotary Ø150mm - Ø6" (USA)

For LH

<b>CODE</b>	<b>982.600</b>
<b>Interface</b>	Velcro
<b>Holes</b>	-
<b>Hardness</b>	-
<b>Tool</b>	LH
<b>Fitting</b>	5/8"
<b>Unit</b>	1



#### Polishing backing pads for rotary Ø165mm - Ø6,4" (USA)

For LH

<b>CODE</b>	<b>982.650</b>
<b>Interface</b>	Velcro
<b>Holes</b>	-
<b>Hardness</b>	Hard
<b>Tool</b>	LH
<b>Fitting</b>	5/8"
<b>Unit</b>	1



#### Polishing backing pads for rotary Ø178mm - Ø7"

For LH

<b>CODE</b>	<b>92.44</b>
<b>Interface</b>	Fibre disc
<b>Holes</b>	-
<b>Hardness</b>	Hard
<b>Tool</b>	LH
<b>Fitting</b>	M14
<b>Unit</b>	1

### 3.2 Polishing backing pads



#### Polishing backing pads - D-A Ø75mm - Ø3"

For LHR75 - LTA75 - HLR75

CODE	990.007
Interface	Velcro
Holes	6
Hardness	Hard
Tool	LHR75 - LTA75 - HLR75
Fitting	M6
Unit	1



#### Polishing backing pads - D-A Ø125mm - Ø5"

For LHR150

CODE	9P05.041
Interface	Velcro
Holes	6
Hardness	Hard
Tool	LHR150
Fitting	5/16"
Unit	1



#### Polishing backing pads - D-A Ø125mm - Ø5"

For LHR15 - LHR12 - LTA125

CODE	980.027N	980.027N/48
Interface	Velcro	Velcro
Holes	MULTIHOLES	MULTIHOLES
Hardness	Hard	Hard
Tool	LHR15-LHR12 LTA125	LHR15-LHR12 LTA125
Fitting	M8	M8
Unit	1	1

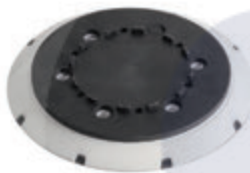
### 3.2 Polishing backing pads



#### Polishing backing pads - D-A Ø125mm - Ø5"

For LK900 - LK125

CODE	980.037
Interface	Velcro
Holes	6 + 1
Hardness	Hard
Tool	LK900 - LK125
Fitting	6 Viti
Unit	1



#### Polishing backing pads - D-A Ø150mm - Ø6"

For LK900

CODE	981.089
Interface	Velcro
Holes	6 + 8 + 1
Hardness	Hard
Tool	LK900
Fitting	6 Viti
Unit	1



#### Polishing backing pads - D-A Ø150mm - Ø6"

For LHR21

CODE	981.321N	981.321N/48
Interface	Velcro	Velcro
Holes	MULTIHOLES	MULTIHOLES
Hardness	Hard	Hard
Tool	LHR21	LHR21
Fitting	M8	M8
Unit	1	1

### 3.2 Polishing backing pads

**NEW**



#### Polishing backing pads PrecisionPro D-A Ø125mm - Ø5"

For iBrid HLR 15 and LHR 15 Mark V

CODE	980.710
------	---------

Interface	Velcro
Holes	-
Hardness	Hard
Tool	iBrid LHR15 - LHR 15 MarkV
Fitting	M8
Unit	1

**NEW**



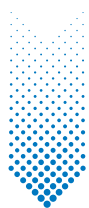
#### Polishing backing pads PrecisionPro D-A Ø150mm - Ø6"

For iBrid HLR 21 and LHR 21 Mark V

CODE	981.710
------	---------

Interface	Velcro
Holes	-
Hardness	Hard
Tool	iBrid LHR21 - LHR 21 MarkV
Fitting	M8
Unit	1





## NEW BACKING PADS PRECISIONPRO

These revolutionary backing pads have been meticulously designed to take your polishing experience to the next level. Without polyurethane, they not only bring durability to the forefront but also provide a lower center of gravity. This means enhanced stability during operation, allowing for greater control and precision in your work.

The rubber edge adds an extra layer of finesse to your polishing tasks, ensuring that even the most delicate surfaces are treated with care.

What truly sets our backing pads apart is their ability to guarantee better balancing, even with different polishing pads. This means you can effortlessly switch between various pads without compromising on performance or quality.

### LOWER CENTER OF GRAVITY

For superior stability and control

### RUBBER BORDER PROTECTION

For added surface protection and a smoother glide

### BALANCING VERSATILITY

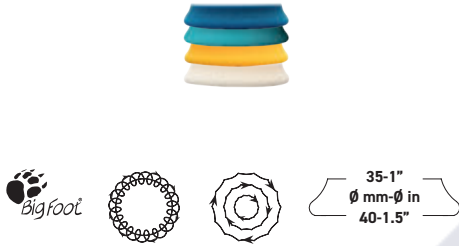
Perfect balance with various polishing pads

Ø125 mm - 5" Part Number **980.710**

Ø150 mm - 6" Part Number **981.710**

### 3.3 Polishing pads

D-A series - Foam polishing pads



#### D-A SERIES Foam polishing pad Ø35 - 40 mm (1" - 1.5")

CODE	Description	Color	Quantity
9.DA40H/6	COARSE	Blue	1 pack with 6 pads
9.DA40H/48	COARSE	Blue	1 box with 48 pads
9.DA40B/6	INTERMEDIATE	Azure	1 pack with 6 pads
9.DA40B/48	INTERMEDIATE	Azure	1 box with 48 pads
9.DA40M/6	FINE	Yellow	1 pack with 6 pads
9.DA40M/48	FINE	Yellow	1 box with 48 pads
9.DA40S/6	ULTRA FINE	White	1 pack with 6 pads
9.DA40S/48	ULTRA FINE	White	1 box with 48 pads



#### D-A SERIES Foam polishing pad Ø50 - 70 mm (2" - 3")

CODE	Description	Color	Quantity
9.DA70H/4	COARSE	Blue	1 pack with 4 pads
9.DA70H/48	COARSE	Blue	1 box with 48 pads
9.DA70B/4	INTERMEDIATE	Azure	1 pack with 4 pads
9.DA70B/48	INTERMEDIATE	Azure	1 box with 48 pads
9.DA70M/4	FINE	Yellow	1 pack with 4 pads
9.DA70M/48	FINE	Yellow	1 box with 48 pads
9.DA70S/4	ULTRA FINE	White	1 pack with 4 pads
9.DA70S/48	ULTRA FINE	White	1 box with 48 pads



#### D-A SERIES Foam polishing pad Ø80 - 100 mm (3" - 4")

CODE	Description	Color	Quantity
9.DA100H	COARSE	Blue	1 pack with 1 pad
9.DA100H/48	COARSE	Blue	1 box with 48 pads
9.DA100B	INTERMEDIATE	Azure	1 pack with 1 pad
9.DA100B/48	INTERMEDIATE	Azure	1 box with 48 pads
9.DA100M	FINE	Yellow	1 pack with 1 pad
9.DA100M/48	FINE	Yellow	1 box with 48 pads
9.DA100S	ULTRA FINE	White	1 pack with 1 pad
9.DA100S/48	ULTRA FINE	White	1 box with 48 pads

3. CONSUMABLES AND ACCESSORIES

### 3.3 Polishing pads

D-A series - Foam polishing pads



130-5"  
Ø mm-Ø in  
150-6"

#### D-A SERIES Foam polishing pad Ø130 - 150 mm (5" - 6")

CODE	Description	Color	Quantity
9.DA150H	COARSE	Blue	1 pack with 1 pad
9.DA150H/48	COARSE	Blue	1 box with 48 pads
9.DA150B	INTERMEDIATE	Azure	1 pack with 1 pad
9.DA150B/48	INTERMEDIATE	Azure	1 box with 48 pads
9.DA150M	FINE	Yellow	1 pack with 1 pad
9.DA150M/48	FINE	Yellow	1 box with 48 pads
9.DA150S	ULTRA FINE	White	1 pack with 1 pad
9.DA150S/48	ULTRA FINE	White	1 box with 48 pads



160-6"  
Ø mm-Ø in  
180-7"

#### D-A SERIES Foam polishing pad Ø160 - 180 mm (6" - 7")

CODE	Description	Color	Quantity
9.DA180H	COARSE	Blue	1 pack with 1 pad
9.DA180H/48	COARSE	Blue	1 box with 48 pads
9.DA180B	INTERMEDIATE	Azure	1 pack with 1 pad
9.DA180B/48	INTERMEDIATE	Azure	1 box with 48 pads
9.DA180M	FINE	Yellow	1 pack with 1 pad
9.DA180M/48	FINE	Yellow	1 box with 48 pads
9.DA180S	ULTRA FINE	White	1 pack with 1 pad
9.DA180S/48	ULTRA FINE	White	1 box with 48 pads



#### IMPORTANT NOTICE

- All pads are individually packaged in a resistant flow pack
- 48 foam pads individually packaged in 1 carton box



D-A INTERMEDIATE IN THE NEW FLOW PACK

# ECO-FRIENDLY

Paper flow pack 100% recyclable

CERTIFIED FOR SUSTAINABILITY FSC (Forest Stewardship Council)

### 3.3 Polishing pads

D-A series - Wool polishing pads



#### D-A SERIES Wool polishing pads Ø35 - 45 mm (1" - 1.5")

CODE	Description	Color	Quantity
9.BW40H/4	COARSE	Blue	1 pack with 4 pads
9.BW40M/4	MEDIUM	Yellow	1 pack with 4 pads



#### D-A SERIES Wool polishing pads Ø50 - 65 mm (2" - 2.5")

CODE	Description	Color	Quantity
9.BW70H/4	COARSE	Blue	1 pack with 4 pads
9.BW70M/4	MEDIUM	Yellow	1 pack with 4 pads





3. CONSUMABLES AND ACCESSORIES

### 3.3 Polishing pads

D-A series - Wool polishing pads

**NEW**



80-3"  
Ømm-Ø in  
80-3"

#### D-A SERIES Wool polishing pads Ø80 mm (3")

CODE	Description	Color	Quantity
<b>9.NW80H</b>	COARSE	Blue	1 pack with 1 pad
<b>9.NW80H/48</b>	COARSE	Blue	1 box with 48 pads
<b>9.NW80M</b>	MEDIUM	Yellow	1 pack with 1 pad
<b>9.NW80M/48</b>	MEDIUM	Yellow	1 box with 48 pads

**NEW**



130-5"  
Ømm-Ø in  
130-5"

#### D-A SERIES Wool polishing pads Ø130 mm (5")

CODE	Description	Color	Quantity
<b>9.NW130H</b>	COARSE	Blue	1 pack with 1 pad
<b>9.NW130H/48</b>	COARSE	Blue	1 box with 48 pads
<b>9.NW130M</b>	MEDIUM	Yellow	1 pack with 1 pad
<b>9.NW130M/48</b>	MEDIUM	Yellow	1 box with 48 pads

**NEW**



160-6"  
Ømm-Ø in  
160-6"

#### D-A SERIES Wool polishing pads Ø160 mm (6")

CODE	Description	Color	Quantity
<b>9.NW160H</b>	COARSE	Blue	1 pack with 1 pad
<b>9.NW160H/48</b>	COARSE	Blue	1 box with 48 pads
<b>9.NW160M</b>	MEDIUM	Yellow	1 pack with 1 pad
<b>9.NW160M/48</b>	MEDIUM	Yellow	1 box with 48 pads



#### IMPORTANT NOTICE

- All pads are individually packaged in a resistant flow pack
- 48 foam pads individually packaged in 1 carton box

### 3.3 Polishing pads

D-A series - Microfiber polishing pads

**NEW**



#### D-A SERIES Microfiber polishing pads Ø40 mm (1.5")

CODE	Description	Color	Quantity
<b>9.MF40H/4</b>	COARSE	Blue	1 pack with 4 pads
<b>9.MF40M/4</b>	FINE	Yellow	1 pack with 4 pads
<b>9.MF40S/4</b>	ULTRA FINE	White	1 pack with 4 pads

**NEW**



#### D-A SERIES Microfiber polishing pads Ø60 mm (2")

CODE	Description	Color	Quantity
<b>9.MF60H/4</b>	COARSE	Blue	1 pack with 4 pads
<b>9.MF60M/4</b>	FINE	Yellow	1 pack with 4 pads
<b>9.MF60S/4</b>	ULTRA FINE	White	1 pack with 4 pads



#### D-A SERIES Microfiber polishing pads Ø85 mm (3")

CODE	Description	Color	Quantity
<b>9.MF80H</b>	COARSE	Blue	1 pack with 1 pad
<b>9.MF80H/48</b>	COARSE	Blue	1 box with 48 pads
<b>9.MF80M</b>	FINE	Yellow	1 pack with 1 pad
<b>9.MF80M/48</b>	FINE	Yellow	1 box with 48 pads
<b>9.MF80S</b>	ULTRA FINE	White	1 pack with 1 pad
<b>9.MF80S/48</b>	ULTRA FINE	White	1 box with 48 pads

3. CONSUMABLES AND ACCESSORIES

### 3.3 Polishing pads

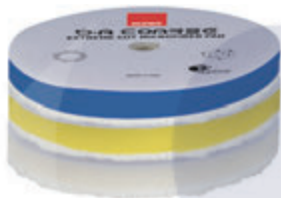
D-A series - Microfiber polishing pads



135-5"  
Ømm-Ø in  
135-5"

#### Microfiber polishing pads Ø135 mm (5")

CODE	Description	Color	Quantity
<b>9.MF130H</b>	COARSE	Blue	1 pack with 1 pad
<b>9.MF130H/48</b>	COARSE	Blue	1 box with 48 pads
<b>9.MF130M</b>	FINE	Yellow	1 pack with 1 pad
<b>9.MF130M/48</b>	FINE	Yellow	1 box with 48 pads
<b>9.MF130S</b>	ULTRA FINE	White	1 pack with 1 pad
<b>9.MF130S/48</b>	ULTRA FINE	White	1 box with 48 pads



160-6"  
Ømm-Ø in  
160-6"

#### Microfiber polishing pads Ø160 mm (6")

CODE	Description	Color	Quantity
<b>9.MF160H</b>	COARSE	Blue	1 pack with 1 pad
<b>9.MF160H/48</b>	COARSE	Blue	1 box with 48 pads
<b>9.MF160M</b>	FINE	Yellow	1 pack with 1 pad
<b>9.MF160M/48</b>	FINE	Yellow	1 box with 48 pads
<b>9.MF160S</b>	ULTRA FINE	White	1 pack with 1 pad
<b>9.MF160S/48</b>	ULTRA FINE	White	1 box with 48 pads

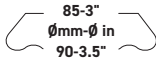


#### IMPORTANT NOTICE

- All pads are individually packaged in a resistant flow pack
- 48 foam pads individually packaged in 1 carton box

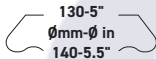
### 3.3 Polishing pads

Foam pads for rotary polishers



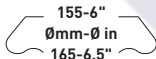
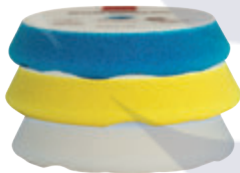
#### Rotary waffle foam pads Ø85 - 90 mm (3" - 3.5")

CODE	Description	Color	Quantity
9.WF90H	COARSE	Blue	1 pack with 1 pad
9.WF90H/48	COARSE	Blue	1 box with 48 pads
9.WF90M	FINE	Yellow	1 pack with 1 pad
9.WF90M/48	FINE	Yellow	1 box with 48 pads
9.WF90S	ULTRA FINE	White	1 pack with 1 pad
9.WF90S/48	ULTRA FINE	White	1 box with 48 pads



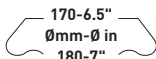
#### Rotary waffle foam pads Ø130 - 140 mm (5" - 5.5")

CODE	Description	Color	Quantity
9.WF150H	COARSE	Blue	1 pack with 1 pad
9.WF150H/48	COARSE	Blue	1 box with 48 pads
9.WF150M	FINE	Yellow	1 pack with 1 pad
9.WF150M/48	FINE	Yellow	1 box with 48 pads
9.WF150S	ULTRA FINE	White	1 pack with 1 pad
9.WF150S/48	ULTRA FINE	White	1 box with 48 pads



#### Rotary waffle foam pads Ø155 - 165 mm (6" - 6.5")

CODE	Description	Color	Quantity
9.WF180H	COARSE	Blue	1 pack with 1 pad
9.WF180H/48	COARSE	Blue	1 box with 48 pads
9.WF180M	FINE	Yellow	1 pack with 1 pad
9.WF180M/48	FINE	Yellow	1 box with 48 pads
9.WF180S	ULTRA FINE	White	1 pack with 1 pad
9.WF180S/48	ULTRA FINE	White	1 box with 48 pads



#### Rotary waffle foam pads Ø170 - 180 mm (6.5" - 7")

CODE	Description	Color	Quantity
9.WF200H	COARSE	Blue	1 pack with 1 pad
9.WF200H/48	COARSE	Blue	1 box with 48 pads
9.WF200M	FINE	Yellow	1 pack with 1 pad
9.WF200M/48	FINE	Yellow	1 box with 48 pads
9.WF200S	ULTRA FINE	White	1 pack with 1 pad
9.WF200S/48	ULTRA FINE	White	1 box with 48 pads



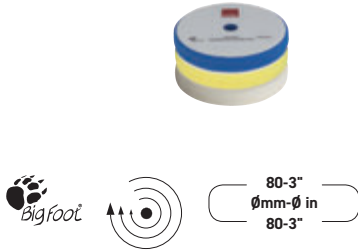
#### IMPORTANT NOTICE

- All pads are individually packaged in a resistant transparent flow pack with UV protection
- 48 foam pads individually packaged in 1 carton box

### 3. CONSUMABLES AND ACCESSORIES

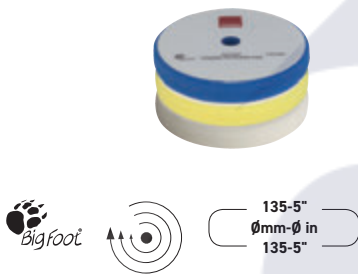
## 3.3 Polishing pads

Foam pads for rotary polishers



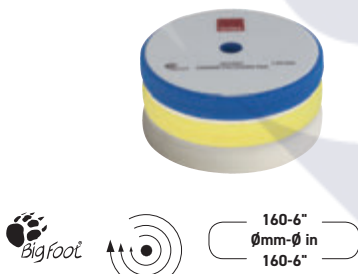
### Foam polishing pads Ø80 mm (3")

CODE	Description	Color	Quantity
<b>9.BR90H</b>	COARSE	Blue	1 pack with 1 pad
<b>9.BR90H/48</b>	COARSE	Blue	1 box with 48 pads
<b>9.BR90M</b>	FINE	Yellow	1 pack with 1 pad
<b>9.BR90M/48</b>	FINE	Yellow	1 box with 48 pads
<b>9.BR90S</b>	ULTRA FINE	White	1 pack with 1 pad
<b>9.BR90S/48</b>	ULTRA FINE	White	1 box with 48 pads



### Foam polishing pads Ø135 mm (5")

CODE	Description	Color	Quantity
<b>9.BR150H</b>	COARSE	Blue	1 pack with 1 pad
<b>9.BR150H/48</b>	COARSE	Blue	1 box with 48 pads
<b>9.BR150M</b>	FINE	Yellow	1 pack with 1 pad
<b>9.BR150M/48</b>	FINE	Yellow	1 box with 48 pads
<b>9.BR150S</b>	ULTRA FINE	White	1 pack with 1 pad
<b>9.BR150S/48</b>	ULTRA FINE	White	1 box with 48 pads



### Foam polishing pads Ø160 mm (6")

CODE	Description	Color	Quantity
<b>9.BR180H</b>	COARSE	Blue	1 pack with 1 pad
<b>9.BR180H/48</b>	COARSE	Blue	1 box with 48 pads
<b>9.BR180M</b>	FINE	Yellow	1 pack with 1 pad
<b>9.BR180M/48</b>	FINE	Yellow	1 box with 48 pads
<b>9.BR180S</b>	ULTRA FINE	White	1 pack with 1 pad
<b>9.BR180S/48</b>	ULTRA FINE	White	1 box with 48 pads



### Foam polishing pads Ø180 mm (7")

CODE	Description	Color	Quantity
<b>9.BR200H</b>	COARSE	Blue	1 pack with 1 pad
<b>9.BR200H/48</b>	COARSE	Blue	1 box with 48 pads
<b>9.BR200M</b>	FINE	Yellow	1 pack with 1 pad
<b>9.BR200M/48</b>	FINE	Yellow	1 box with 48 pads
<b>9.BR200S</b>	ULTRA FINE	White	1 pack with 1 pad
<b>9.BR200S/48</b>	ULTRA FINE	White	1 box with 48 pads



#### IMPORTANT NOTICE

- All pads are individually packaged in a resistant flow pack
- 48 foam pads individually packaged in 1 carton box

### 3.3 Polishing pads

Wool pads for rotary polishers - Cut & finish



#### Cut & finish wool polishing pads for backing Ø75mm Ø3"

CODE	Description	Color	Quantity
9.BL80F	CUT&FINISH	White	1 pack with 1 pad
9.BL80F/48**	CUT&FINISH	White	1 box with 48 pads



#### Cut & finish wool polishing pads for backing Ø125mm Ø5"

CODE	Description	Color	Quantity
9.BL150F	CUT&FINISH	White	1 pack with 1 pad
9.BL150F/48	CUT&FINISH	White	1 box with 48 pads



#### Cut & finish wool polishing pads for backing Ø150mm Ø6"

CODE	Description	Color	Quantity
9.BL180F	CUT&FINISH	White	1 pack with 1 pad
9.BL180F/48	CUT&FINISH	White	1 box with 48 pads



#### Cut & finish wool polishing pads for backing Ø165mm Ø6.5"

CODE	Description	Color	Quantity
9.BL200F	CUT&FINISH	White	1 pack with 1 pad
9.BL200F/48	CUT&FINISH	White	1 box with 48 pads



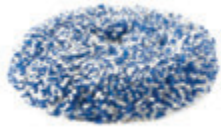
#### IMPORTANT NOTICE

- All pads are individually packaged in a resistant transparent flow pack with UV protection
- 48 foam pads individually packaged in 1 carton box

3. CONSUMABLES AND ACCESSORIES

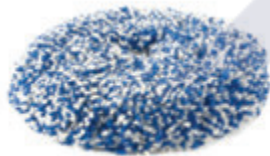
### 3.3 Polishing pads

Wool pads for rotary polishers - Twisted



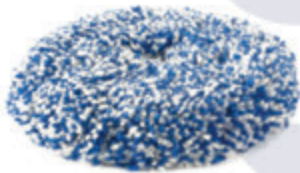
#### Twisted wool polishing pads for backing Ø125mm Ø5"

CODE	Description	Color	Quantity
9.BL180H	COARSE	Blue / White	1 pack with 1 pad
9.BL180H/48	COARSE	Blue / White	1 box with 48 pads



#### Twisted wool polishing pads for backing Ø150mm Ø6"

CODE	Description	Color	Quantity
9.BL200H	COARSE	Blue / White	1 pack with 1 pad
9.BL200H/48	COARSE	Blue / White	1 box with 48 pads



#### Twisted wool polishing pads for backing Ø165mm Ø6.5"

CODE	Description	Color	Quantity
9.BL230H	COARSE	Blue / White	1 pack with 1 pad
9.BL230H/48	COARSE	Blue / White	1 box with 48 pads



#### IMPORTANT NOTICE

- All pads are individually packaged in a resistant transparent flow pack with UV protection
- 48 foam pads individually packaged in 1 carton box





### 3.4 Polishing Compounds

D-A Series



#### D-A COARSE

High performance COARSE cutting compound

- Fast defect removal with extreme ease of use on all paint types
- Formula containing special lubricants to ensure longer polishing cycles
- Reduced polishing dust and easy removal of residues

CODE	9.DACOARSE250	9.DACOARSE	9.DACOARSE5L
<b>Description</b>	COARSE	COARSE	COARSE
<b>Dimensions</b>	250 mL	1000 mL	5 L
<b>Unit</b>	1 Bottle	1 Bottle	1 Tank
<b>Units per pack</b>	12 Bottles	6 Bottles	2 Tanks
<b>Orders multiple of</b>	12 Bottles	6 Bottles	2 Tanks



#### D-A FINE

High performance FINE polishing compound

- New micro - abrasive technology for improved cutting capacity
- Easy to remove, minimising marks on soft or delicate paints
- Use as 2nd polishing step after D-A COARSE paste

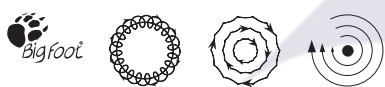
CODE	9.DAFINE250	9.DAFINE	9.DAFINE5L
<b>Description</b>	FINE	FINE	FINE
<b>Dimensions</b>	250 mL	1000 mL	5 L
<b>Unit</b>	1 Bottle	1 Bottle	1 Tank
<b>Units per pack</b>	12 Bottles	6 Bottles	2 Tanks
<b>Orders multiple of</b>	12 Bottles	6 Bottles	2 Tanks

# UNO Series



### 3.4 Polishing Compounds

UNO Series

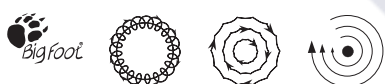


#### UNO PURE

Universal ultra-finishing polish

- Easy to use and easy removal of residues
- Suitable for all types of paint, including: single - step, clear, hard, soft or sticky
- No added protection, leaves the finish ready for application of a protective product

CODE	9.PURE250	9.PURE	9.PURE5L
<b>Description</b>	Ultra-Fine	Ultra-Fine	Ultra-Fine
<b>Dimensions</b>	250 mL	1000 mL	5 L
<b>Unit</b>	1 Bottle	1 Bottle	1 Tank
<b>Units per pack</b>	12 Bottles	6 Bottles	2 Tanks
<b>Orders multiple of</b>	12 Bottles	6 Bottles	2 Tanks

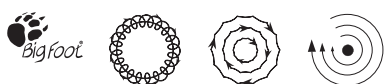


#### UNO PROTECT

One step polish & sealant

- Removes mild to moderate imperfections in a single pass
- Polishes the surface, imparting high levels of gloss and colour depth
- Provides long - lasting protection, up to 90 days, thanks to a mix of high quality waxes

CODE	9.PROTECT250	9.PROTECT	9.PROTECT5L
<b>Description</b>	Polish & Sealant	Polish & Sealant	Polish & Sealant
<b>Dimensions</b>	250 mL	1000 mL	5 L
<b>Unit</b>	1 Bottle	1 Bottle	1 Tank
<b>Units per pack</b>	12 Bottles	6 Bottles	2 Tanks
<b>Orders multiple of</b>	12 Bottles	6 Bottles	2 Tanks



#### UNO ADVANCED

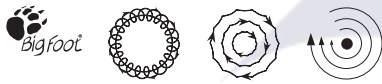
Stand alone protection & maintenance polish

- Highly technical micro-abrasive technology fused with state-of-the-art nano protection
- It can remove minor imperfection while creating a durable layer of protection that lasts up to 12 months

CODE	9.ADVANCED250	9.ADVANCED
<b>Description</b>	Protection & Maintenance Polish	Protection & Maintenance Polish
<b>Dimensions</b>	250 mL	1000 mL
<b>Unit</b>	1 Bottle	1 Bottle
<b>Units per pack</b>	12 Bottles	6 Bottles
<b>Orders multiple of</b>	12 Bottles	6 Bottles

### 3.4 Polishing Compounds

MILLE Series

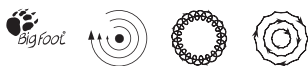


#### MILLE COARSE

COARSE universal polishing compound

- Ideal for industrial environments and fast cutting applications
- High performance compound, the most aggressive in the Mille range

CODE	9.BGCOARSE250	9.BGCOARSE	9.BGCOARSE5L
<b>Description</b>	COARSE	COARSE	COARSE
<b>Dimensions</b>	250 mL	1000 mL	5 L
<b>Unit</b>	1 Bottle	1 Bottle	1 Tank
<b>Units per pack</b>	12 Bottles	6 Bottles	2 Tanks
<b>Orders multiple of</b>	12 Bottles	6 Bottles	2 Tanks



#### MILLE FINE

FINE universal polishing compound

- It can remove moderate-to-fine imperfections, while leaving a high-gloss finish without holograms
- It provides a smooth user experience with all polisher movements

CODE	9.BGFINE250	9.BGFINE	9.BGFINE5L
<b>Description</b>	FINE	FINE	FINE
<b>Dimensions</b>	250 mL	1000 mL	5 L
<b>Unit</b>	1 Bottle	1 Bottle	1 Tank
<b>Units per pack</b>	12 Bottles	6 Bottles	2 Tanks
<b>Orders multiple of</b>	12 Bottles	6 Bottles	2 Tanks



#### MILLE Black Line

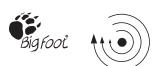
COARSE universal polishing compound, for dark paints and carbon fibre

- Cutting compound specially designed to polish dark paint systems, carbon fibers and composite materials
- This versatile and universal compound allows to correct severe defects and sanding marks

CODE	9.BGCOARSEBL	9.BGCOARSEBL5L
<b>Description</b>	COARSE	COARSE
<b>Dimensions</b>	1000 mL	5 L
<b>Unit</b>	1 Bottle	1 Tank
<b>Units per pack</b>	6 Bottles	2 Tanks
<b>Orders multiple of</b>	6 Bottles	2 Tanks

### 3.4 Polishing Compounds

ROTARY Series

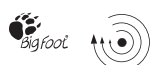


#### ROTARY COARSE

COARSE polishing compound rotary polishers

- Versatile and universal, allows even deep scratches to be removed
- Good creaminess that allows you to always work in optimal conditions without creating dust

CODE	9.BRCOARSE250	9.BRCOARSE	9.BRCOARSE5L
<b>Description</b>	COARSE	COARSE	COARSE
<b>Dimensions</b>	250 mL	1000 mL	5 L
<b>Unit</b>	1 Bottle	1 Bottle	1 Tank
<b>Units per pack</b>	12 Bottles	6 Bottles	2 Tanks
<b>Orders multiple of</b>	12 Bottles	6 Bottles	2 Tanks

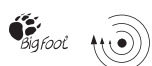


#### ROTARY FINE

FINE polishing compound for rotary polishers

- Ideal product for achieving the right mix of cut and finish
- Specifically formulated for perfect finishes even on particularly hard clear coats

CODE	9.BRFINE250	9.BRFINE	9.BRFINE5L
<b>Description</b>	FINE	FINE	FINE
<b>Dimensions</b>	250 mL	1000 mL	5 L
<b>Unit</b>	1 Bottle	1 Bottle	1 Tank
<b>Units per pack</b>	12 Bottles	6 Bottles	2 Tanks
<b>Orders multiple of</b>	12 Bottles	6 Bottles	2 Tanks



#### ROTARY Black Line

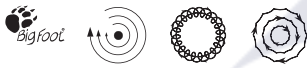
COARSE polishing compound for dark paints and carbon fibre

- Cutting compound specially designed to polish dark paint systems, carbon fibers and composite materials
- This rotary compound allows to correct severe defects and sanding marks

CODE	9.BRCOARSEBL	9.BRCOARSEBL5L
<b>Description</b>	COARSE	COARSE
<b>Dimensions</b>	1000 mL	5 L
<b>Unit</b>	1 Bottle	1 Tank
<b>Units per pack</b>	6 Bottles	2 Tanks
<b>Orders multiple of</b>	6 Bottles	2 Tanks

### 3.4 Polishing Compounds

**NEW**



#### XC-2 XTRA CUT COMPOUND

Superior performance on gelcoat and other high-solid industrial finishes

- Faster defects removal
- Improved finish and optimized clarity
- Superior performance on solid surfaces
- Better emulsion for easy wipe off

CODE	9.XC2/1KG	9.XC2/4,5KG
<b>Description</b>	XTRA CUT	XTRA CUT
<b>Dimensions</b>	1kg	4,5kg
<b>Unit</b>	1 Bottle	1 Tank
<b>Units per pack</b>	6 Bottles	2 Tanks
<b>Orders multiple of</b>	6 Bottles	2 Tanks



### 3.5 Residue remover



#### REVEAL LITE

Formulated for surface preparation and cleaning

- Optimised surface preparation and cleaning product specifically formulated to remove residues, waxes, coverings and other contaminants left on surfaces before or after polishing

CODE	9.REVEALM750	9.REVEALM5L
<b>Description</b>	REVEAL LITE	REVEAL LITE
<b>Dimensions</b>	750 mL	5 L
<b>Unit</b>	1 Bottle	1 Tank
<b>Units per pack</b>	6 Bottles	2 Tanks
<b>Orders multiple of</b>	6 Bottles	2 Tanks



#### REVEAL STRONG

Formulated for surface preparation and cleaning

- Formulated to remove the most stubborn residues, fillers, adhesives, oily residues; REVEAL STRONG shows the true condition of the surface to be polished, removing everything that can mask defects

CODE	9.REVEALH750	9.REVEALH5L
<b>Description</b>	REVEAL STRONG	REVEAL STRONG
<b>Dimensions</b>	750 mL	5 L
<b>Unit</b>	1 Bottle	1 Tank
<b>Units per pack</b>	6 Bottles	2 Tanks
<b>Orders multiple of</b>	6 Bottles	2 Tanks

## 3.6 Car Care Products

**NEW**


### WASH & DECONTAMINATION MITT

All-in-one solution to wash and decontaminate

- Helps you save time and effort with dual-purpose design
- Prepares the surface for paint correction and/or application of surface protection
- Removes road grime and embedded surface contamination

CODE	9.CLAYMITT
------	------------

<b>Description</b>	RUPES Washing and Decontamination Glove
<b>Dimensions</b>	22cm (L) x 33cm (H)
<b>Unit</b>	1 pz



### M707

Carnauba high gloss protective shampoo

- High - quality shampoo containing a high percentage of genuine carnauba wax
- The combined action of wax and cleanser guarantees efficient vehicle cleaning, protection from environmental contamination and increased shine in one step

CODE	9.CCM707	9.CCM707T/2
------	----------	-------------

<b>Description</b>	Carnauba High Gloss Protective Shampoo	
<b>Dimensions</b>	500 mL	2 x 5 L
<b>Unit</b>	1 Bottle	Tank (x2)
<b>Units per pack</b>	1 Bottle	2 Tanks



### M101

High concentrated detailing shampoo

- Designed to be extremely effective in removing stubborn dirt and preparing the bodywork for the polishing and detailing process

CODE	9.CCM101	9.CCM101T/2
------	----------	-------------

<b>Description</b>	High Concentrated Detailing Shampoo	
<b>Dimensions</b>	500 mL	2 x 5 L
<b>Unit</b>	1 Bottle	Tank (x2)
<b>Units per pack</b>	1 Bottle	2 Tanks



### M501

Multi purpose degreaser

- Effective for degreasing the car's engine compartment or the inside of wheel arches (recommended dilution 1:5), yet gentle enough to be used directly on the leather of the seats or cabin plastics

CODE	9.CCM501	9.CCM501T/2
------	----------	-------------

<b>Description</b>	Multi Purpose Degreaser	
<b>Dimensions</b>	500 mL	2 x 5 L
<b>Unit</b>	1 Bottle	Tank (x2)
<b>Units per pack</b>	1 Bottle	2 Tanks





## 3.6 Car Care Products



### M606

Rapid cleaner detailer

- Ready - to - use cleaner, suitable for all types of exterior car surfaces (bodywork, rubber, chrome profiles, plastics, wheels)
- The lubricants used in the formulation protect against unintentional micro - scratches

CODE	9.CCM606	9.CCM606T/2
------	----------	-------------

<b>Description</b>	Rapid Cleaner Detailer	Rapid Cleaner Detailer
<b>Dimensions</b>	500 mL	2 x 5 L
<b>Unit</b>	1 Bottle	Tank (x2)
<b>Units per pack</b>	1 Bottle	2 Tanks



### P808

Protective sealant

- Resistant protective film on car bodywork
- Protection for up to 6 months from the most common sources of environmental contamination
- Increases the brilliance of the bodywork

CODE	9.CCP808	9.CCP808T/2
------	----------	-------------

<b>Description</b>	Protective Sealant	Protective Sealant
<b>Dimensions</b>	500 mL	2 x 5 L
<b>Unit</b>	1 Bottle	Tank (x2)
<b>Units per pack</b>	1 Bottle	2 Tanks



### G401

Glass cleaner

- Suitable for any type of glass: both original and after - market, even tinted
- Dirt residues and oily patinas are easily dissolved and removed in a single pass, leaving no halo

CODE	9.CCG401	9.CCG401T/2
------	----------	-------------

<b>Description</b>	Glass Cleaner	Glass Cleaner
<b>Dimensions</b>	500 mL	2 x 5 L
<b>Unit</b>	1 Bottle	Tank (x2)
<b>Units per pack</b>	1 Bottle	2 Tanks



### G202

Crystal glass polish

- Extremely fine abrasive paste that really deep - cleans the glass without scratching it and thus substantially improving its transparency
- Suitable for removing limescale stains from the outer surface of windscreen and side windows

CODE	9.CCG202
------	----------

<b>Description</b>	Crystal Glass Polish (1 Foam Applicator included)
<b>Dimensions</b>	150 mL
<b>Unit</b>	1 Bottle
<b>Units per pack</b>	1 Bottle

## 3.6 Car Care Products



### L301

Leather fast cleaner

- Specially formulated for use on all leather upholstery in the car
- Safely removes stubborn dirt while moisturising and protecting surfaces, restoring them to their original shine

CODE	9.CCL301	9.CCL301T/2
<b>Description</b>	Leather Fast Cleaner	
<b>Dimensions</b>	500 mL	2 x 5 L
<b>Unit</b>	1 Bottle	Tank (x2)
<b>Units per pack</b>	1 Bottle	2 Tanks



### DOUBLE CLEAN

High - concentrated cleaner for car wash

- Two - component cleaner for washing cars, trucks and workshop floors, engine compartments
- On particularly greasy dirt, spray and leave to act
- Can also be used as an anti - silicone prior to painting

CODE	9.CCDCLEAN/5l	9.CCDCLEAN/25l
<b>Description</b>	High-concentration detergent	
<b>Dimensions</b>	5 L	25 L
<b>Unit</b>	1 Tank	1 Tank
<b>Orders multiple of</b>	4 Tanks	1 Tank



### DETERSOL

No foam detergent

- The excellent cleaning power and low foaminess of the product ensure effective and rapid work and a delicate fragrance remains in the environment
- Takes advantage of the mechanical action due to the force with which it is sprayed

CODE	100.1607/4
<b>Description</b>	No foam detergent (CK 31), 1 Carton with 4 Tanks
<b>Dimensions</b>	4 x 5 L
<b>Unit</b>	Tank (x4)
<b>Units per pack</b>	4 Tanks

### 3.7 Accessories

iBrid HLR15 & HLR21

**NEW**



#### Power supply for iBrid HLR15 & HLR21

<b>CODE</b>	9HP185LT
-------------	----------

<b>Description</b>	Power Supply
--------------------	--------------

**NEW**



#### Dual battery charger for iBrid HLR15 & HLR21

<b>CODE</b>	9HC185LT
-------------	----------

<b>Description</b>	Charger
--------------------	---------

**NEW**



#### Battery for iBrid HLR15 & HLR21

<b>CODE</b>	9HB185LT
-------------	----------

<b>Description</b>	Rechargeable power pack
--------------------	-------------------------

### 3.7 Accessories

HLR 75 & Sanders HS Series with iBrid Technology



#### Power supply for HLR75 iBrid Mini & Sanders HS Series

<b>CODE</b>	<b>9HP180LT</b>
<b>Description</b>	Power Supply



#### Battery charger for HLR75 iBrid Mini & Sanders HS Series

<b>CODE</b>	<b>9HC180LT</b>
<b>Description</b>	Charger



#### Battery for HLR75 iBrid Mini & Sanders HS Series

<b>CODE</b>	<b>9HB180LT</b>
<b>Description</b>	Rechargeable power pack

### 3.7 Accessories

iBrid Nano



#### Power supply for BigFoot iBrid Nano

**CODE** 9HP120LT

**Description** Power Supply



#### Battery charger for BigFoot iBrid Nano

**CODE** 9HC120LT

**Description** Charger



#### Battery for BigFoot iBrid Nano

**CODE** 9HB125LT

**Description** Rechargeable power pack



#### Accessory case for BigFoot iBrid Nano

**CODE** 9.Z987/BF

**Description** Accessories Case with container\*

\*Accessories not included



#### BigFoot iBrid Nano cleaning cup brushes

CODE	9.BF3015/6	9.BF3030/6	9.BF3000/6
------	------------	------------	------------

<b>Description</b>	NYLON SOFT	NYLON HARD	HORSEHAIR MEDIUM
--------------------	---------------	---------------	---------------------

<b>Dimensions</b>	Ø30	Ø30	Ø30
-------------------	-----	-----	-----

<b>Unit</b>	1 carton with 6 brushes		
-------------	-------------------------	--	--

### 3.7 Accessories

iBrid Nano



#### Extension for BigFoot iBrid Nano

<b>CODE</b>	<b>291.390/C</b>
-------------	------------------

<b>Description</b>	70mm length - M8 = F - M6 = M Extension Shaft
--------------------	--



#### Rotary functional unit for BigFoot iBrid Nano

<b>CODE</b>	<b>562.390</b>
-------------	----------------

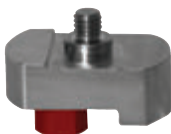
<b>Description</b>	Rotary Fuctional Unit
--------------------	-----------------------



#### Orbit functional unit for BigFoot iBrid Nano

<b>CODE</b>	<b>581.390/C</b>
-------------	------------------

<b>Description</b>	3mm orbit Fuctional Unit
--------------------	--------------------------



#### Orbit functional unit for BigFoot iBrid Nano

<b>CODE</b>	<b>58.390/C</b>
-------------	-----------------

<b>Description</b>	12mm orbit Fuctional Unit
--------------------	---------------------------



#### Abrasives for BigFoot iBrid Nano

<b>CODE</b>	<b>9.45520/100</b>	<b>9.45530/100</b>
-------------	--------------------	--------------------

<b>Description</b>	Adhesive Disc for Denibbing - Ø35mm - P2000 (100 Pcs)	Adhesive Disc for Denibbing - Ø35mm - P3000 (100 Pcs)
--------------------	---	---

### 3.7 Accessories

Sanders



**GREEN  
TECH  
FILTER**

#### GREEN TECH filter

For electric and pneumatic sander

CODE	Description
<b>80.400/C</b>	Green Tech Filter
<b>INCLUDED</b>	<b>Q.ty</b>
88.400 - Filter cartridge	1



#### Filter unit for electric and pneumatic sanders

CODE	Description
<b>80.400/KIT</b>	Filter unit kit
<b>80.400/KIT - INCLUDED</b>	<b>Q.ty</b>
9.Z906 - Filter holder	1
80.400/C - Filter unit	1
9.1266/C Hose Ø25mm - 1,3 mt	1



**GREEN  
TECH  
FILTER**

#### GREEN TECH filters

For iBrid sanders - HS series

CODE	Description
<b>80.436/C</b>	Green Tech Filter for iBrid Sanders
<b>INCLUDED</b>	<b>Q.ty</b>
88.436 - Filter cartridge for iBrid Sanders	1



#### Filter unit for iBrid sanders - HS series

CODE	Description
<b>80.436/KIT</b>	Filter unit kit for iBrid Sanders
<b>80.436/KIT - INCLUDED</b>	<b>Q.ty</b>
9.Z906 - Filter holder	1
80.436/C - Filter unit	1
9.1266/C Hose Ø25mm - 1,3 mt	1



### 3.7 Accessories

Sanders



#### Accessories for filter units

CODE	9.1266/C	9.2906
Description	Hose Ø25mm	Filter holder
Length	1,3m	-



**3.7 Accessories**



**No vibration side handle**

<b>CODE</b>	<b>81.322/C</b>	<b>81.326</b>
<b>Description</b>	Complete side handle	Handle
<b>Thread</b>	M8	M10
<b>Tool</b>	BA - LH16ENS/ LH18ENS - GL040/GL080	GL - GM - LH22/ LH31/LH32/LH232



**Conical ring nut x vulkofix BA15**

<b>CODE</b>	<b>936.91</b>
<b>Description</b>	For Vulkofix
<b>Tool</b>	923.91 - 92.91



**Air regulator black**

<b>CODE</b>	<b>9P03.060</b>
<b>Description</b>	Pneumatic tool speed control



**Lubricat oil**

<b>CODE</b>	<b>9.1640/5</b>
<b>Description</b>	Lubricant/detergent oil, 5 bottles 50ml each



### 3.7 Accessories



#### CARRIER Polishing trolley with three drawers

CODE CARRIER

##### INCLUDED Q.tà

Transport handle - CAR/HANDLE/STD	1
Fixed & mobile base - CAR/TRolLEY/STD	1
Additional module - CAR/MODULE/STD	2
Polishing module with 230v socket - CAR/POLISHING/STD	1



#### Base trolley Module with 1 drawer, 2 large wheels and 2 castor wheels

CODE CAR/TROLLEY/STD



#### Additional module Module with 1 drawer

CODE CAR/MODULE/STD



#### Polishing module With 230v socket

CODE CAR/POLISHING/STD



#### Base fix & mobile Module with 1 drawer, 4 feet and 4 castor wheels

CODE CAR/FIX/STD

### 3.7 Accessories



#### Drawer

Drawer to accommodate tools and accessories

CODE

CAR/CASE/STD



#### Additional mode

Module without drawer

CODE

CAR/ELEMENT/STD



#### Fastener for modules

Fastener insert for wall system modules

CODE

025.1502



#### Handle

Transport handle

CODE

CAR/HANDLE/STD

**3.7 Accessories**

**NEW**



**LL200 swirl finder flashlight**

CODE	LL200
------	-------



**BigFoot detailing belt**

CODE	9.2884/BF
------	-----------



**BigFoot microfiber cloths**

CODE	Description	Quantity
9.BF9050	Cloth - Blue	1
9.BF9060	Cloth - Yellow	1
9.BF9070	Cloth - White	1
9.BFMICROF2	Cloth - Grey	1
9.BF9022/10	Cloths - Yellow	1 conf. 10 cloths



**BigFoot claw pad tool**

CODE	9.BF7001	9.BF7002
------	----------	----------

Description	BigFoot Claw Pad Tool	BigFoot Claw Pad Tool with holder
-------------	-----------------------	-----------------------------------

### 3.7 Accessories



#### Wall mounted tool holder RUPES

CODE

9.HOLDER

*Mounting kit included*



#### Cable clamp RUPES

CODE

9.Z1024/25

*Pack 25pcs*



## 3.7 Accessories



### BigFoot bag MarkIII

Black, semi - rigid bag with embroidered RUPES and BigFoot logos

<b>CODE</b>	<b>9.Z1043/BF</b>
-------------	-------------------

<b>Description</b>	Semirigid BigFoot bag
--------------------	-----------------------

<b>Dimension [cm]</b>	50L x 30H x 25P
-----------------------	-----------------



### Bag BigFoot

Black, semi - rigid bag with embroidered RUPES and BigFoot logos

<b>CODE</b>	<b>9.Z871/BF</b>
-------------	------------------

<b>Description</b>	Semirigid BigFoot bag
--------------------	-----------------------

<b>Dimension [cm]</b>	50L x 30H x 25P
-----------------------	-----------------



### Soft bag BigFoot

Black, soft bag with embroidered RUPES and BigFoot logos

<b>CODE</b>	<b>9.Z883/BF</b>
-------------	------------------

<b>Description</b>	Soft BigFoot bag
--------------------	------------------

<b>Dimension [cm]</b>	40L x 30H x 25P
-----------------------	-----------------



### BigFoot marine bag

Blue, semi - rigid bag with embroidered RUPES and BigFoot logos

<b>CODE</b>	<b>9.Z912/BF</b>
-------------	------------------

<b>Description</b>	Semirigid BigFoot bags
--------------------	------------------------

<b>Dimension [cm]</b>	50L x 30H x 25P
-----------------------	-----------------



### Mille BigFoot bag

Grey, semi - rigid bag with embroidered RUPES and BigFoot logos

<b>CODE</b>	<b>9.Z999/BF</b>
-------------	------------------

<b>Description</b>	Semirigid BigFoot bag
--------------------	-----------------------

<b>Dimension [cm]</b>	50L x 30H x 25P
-----------------------	-----------------



### 3.7 Accessories



#### Rotary BigFoot bag

Silver, semi - rigid bag with embroidered RUPES and BigFoot logos

<b>CODE</b>	<b>9.Z998/BF</b>
<b>Description</b>	Semirigid BigFoot bag
<b>Dimension [cm]</b>	50L x 30H x 25P



#### BigFoot Silver bag

Silver, rigid bag with embroidered RUPES and BigFoot logos

<b>CODE</b>	<b>9.Z1169/BF</b>
<b>Description</b>	Rigid BigFoot bag
<b>Dimension [cm]</b>	50L x 30H x 25P



#### BigFoot big bag

Large black, semi - rigid bag with embroidered RUPES and BigFoot logos

<b>CODE</b>	<b>9.Z917/BF</b>
<b>Description</b>	Rigid BigFoot Bag
<b>Dimension [cm]</b>	55L x 43H x 35P



#### RUPES Systainer BOX

Stackable case

<b>CODE</b>	<b>9.CASEIII</b>
<b>Dimension [cm]</b>	39,6L X 21H 29,6W
<b>Description</b>	Systainer Box



#### RUPES bottle bag

The perfect solution for transporting rupes compound bottles

<b>CODE</b>	<b>9.Z1113</b>
<b>Description</b>	Bottle bag
<b>Dimension [cm]</b>	42L x 30H x 30P

Note: Bottles no includedS

## 3.8 Abrasives

**NEW****Soft Interface without holes**

Ø 75mm - 7mm thickness

**CODE** 990.013

<b>Interface</b>	Sponge
<b>Holes</b>	-
<b>Hardness</b>	Soft
<b>Unit</b>	1 pack with 2 pads

**NEW****Soft Interface without holes**

Ø 75mm - 12mm thickness

**CODE** 990.014

<b>Interface</b>	Sponge
<b>Holes</b>	-
<b>Hardness</b>	Soft
<b>Unit</b>	1 pack with 2 pads

**NEW****Soft Interface without holes**

Ø 125mm - 7mm thickness

**CODE** 980.038

<b>Interface</b>	Sponge
<b>Holes</b>	-
<b>Hardness</b>	Soft
<b>Unit</b>	1 pack with 2 pads

**NEW****Soft Interface without holes**

Ø 125mm - 12mm thickness

**CODE** 980.044

<b>Interface</b>	Sponge
<b>Holes</b>	-
<b>Hardness</b>	Soft
<b>Unit</b>	1 pack with 2 pads

### 3.8 Abrasives

**NEW**



#### Soft Interface without holes

Ø 150mm - 7mm thickness

<b>CODE</b>	<b>981.325</b>
<b>Interface</b>	Sponge
<b>Holes</b>	-
<b>Hardness</b>	Soft
<b>Unit</b>	1 pack with 2 pads

**NEW**

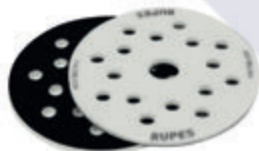


#### Soft Interface without holes

Ø 150mm - 12mm thickness

<b>CODE</b>	<b>981.324</b>
<b>Interface</b>	Sponge
<b>Holes</b>	-
<b>Hardness</b>	Soft
<b>Unit</b>	1 pack with 2 pads

**NEW**



#### Soft Interface holes 8+8+1

Ø 125mm - 7mm thickness

<b>CODE</b>	<b>980.039</b>
<b>Interface</b>	Sponge
<b>Holes</b>	8+8+1
<b>Hardness</b>	Soft
<b>Unit</b>	1 pack with 2 pads

**NEW**



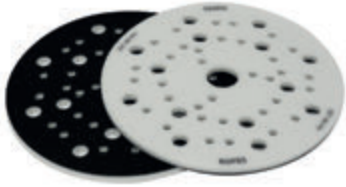
#### Soft Interface holes 8+8+1

Ø 125mm - 12mm thickness

<b>CODE</b>	<b>980.043</b>
<b>Interface</b>	Sponge
<b>Holes</b>	8+8+1
<b>Hardness</b>	Soft
<b>Unit</b>	1 pack with 2 pads

**3.8 Abrasives**

**NEW**



**Soft Interface MULTIHOLEs**

Ø 150mm - 7mm thickness

**CODE** 981.322

<b>Interface</b>	Sponge
<b>Holes</b>	MULTIHOLEs
<b>Hardness</b>	Soft
<b>Unit</b>	1 pack with 2 pads

**NEW**

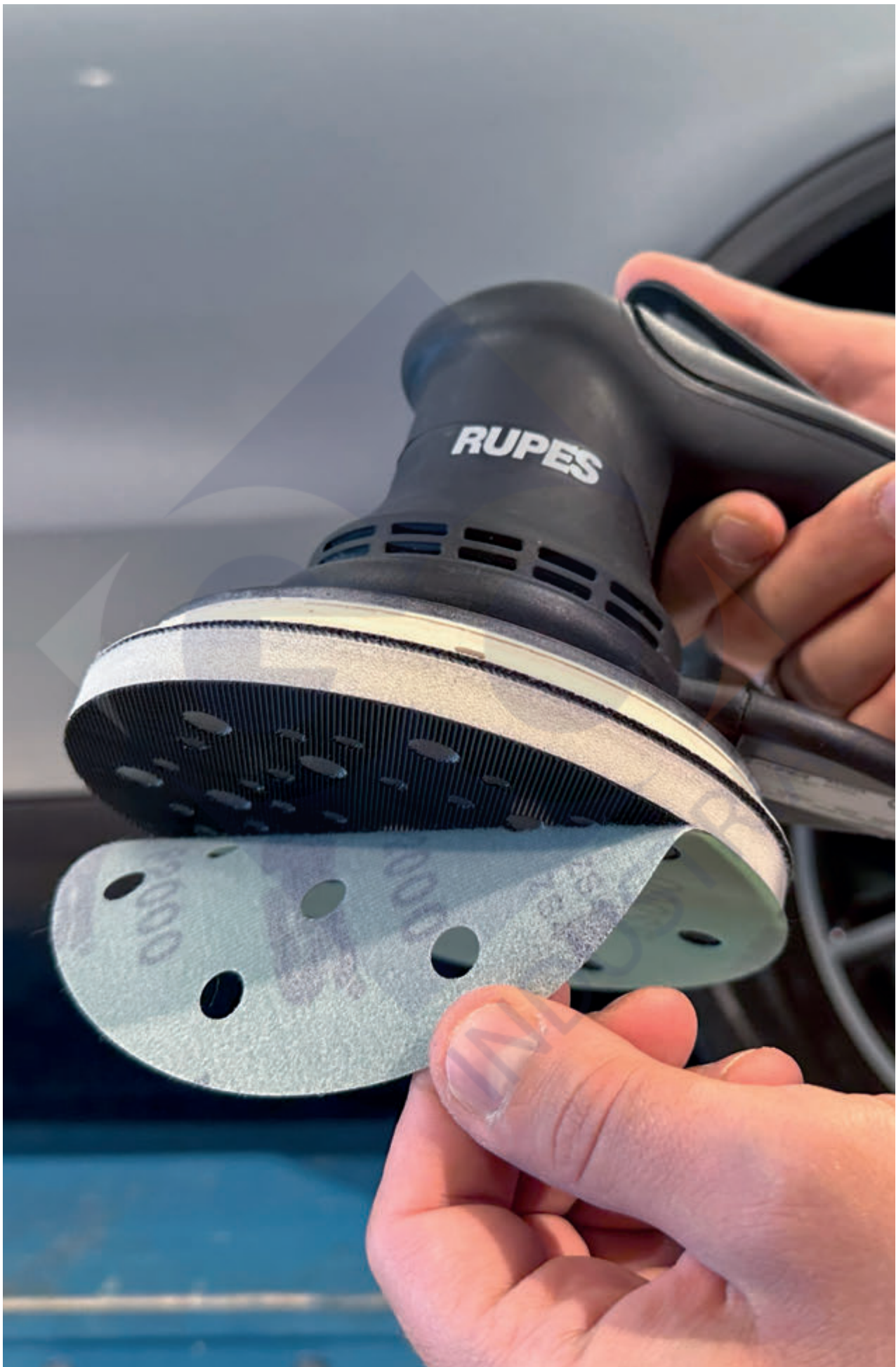


**Soft Interface MULTIHOLEs**

Ø 150mm - 12mm thickness

**CODE** 981.323

<b>Interface</b>	Sponge
<b>Holes</b>	MULTIHOLEs
<b>Hardness</b>	Soft
<b>Unit</b>	1 pack with 2 pads

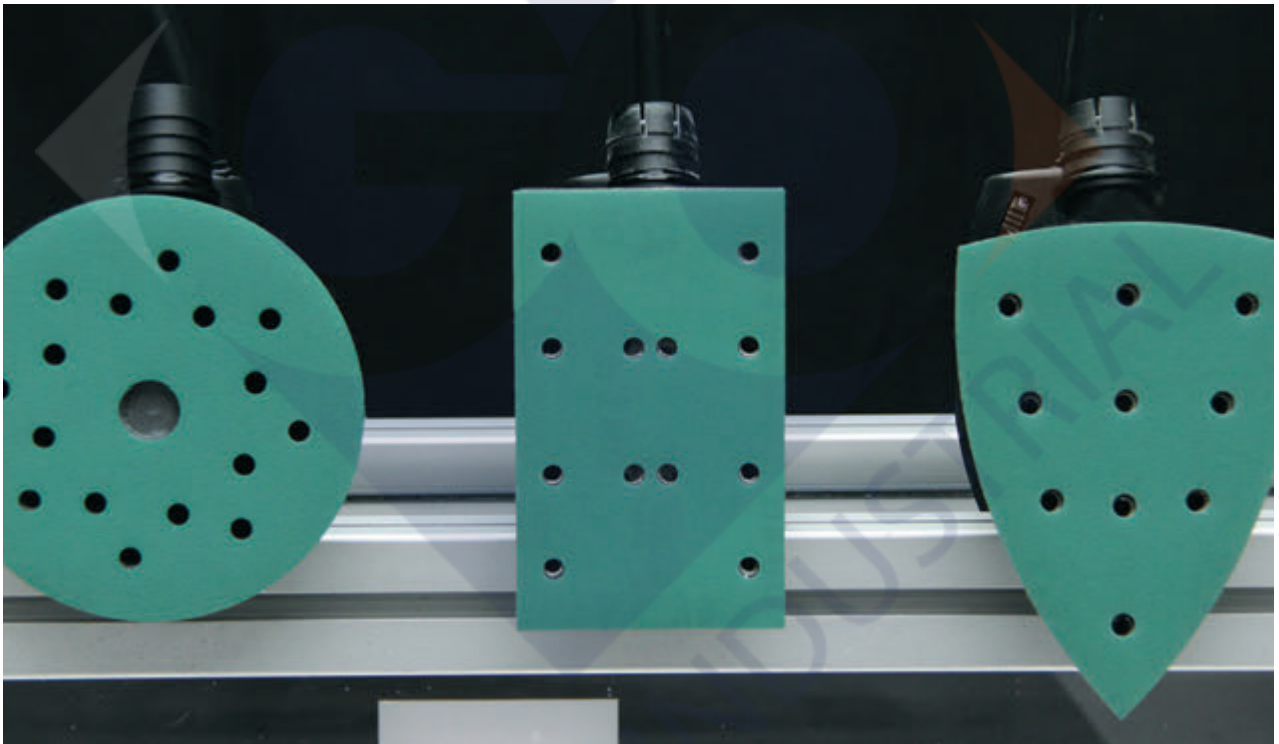




**RUPES®**

# HQ400 FILM ABRASIVES

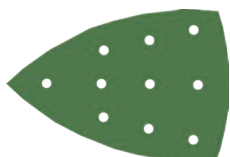
**ALL THAT YOU NEED  
TO MAKE YOUR  
OUTCOME PERFECT**



A full range of abrasives with perforated polyester film backing that ensure higher sanding efficiency and an extended life. Higher quality than paper thanks to the grain homogeneity and the even surface. Resistant to humidity, efficient even on wet surfaces with reinforced edges, it's long lasting without film damage.

Efficient on difficult to reach areas such as corners and sharp edges. No obstruction on the film due to the better vacuum system, multihole plates and central hole, removes up to 50% more dust than traditional paper abrasive film.

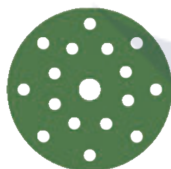
## 3.8 Abrasives



### HQ400 104 film delta sheet

Abrasive films with polyester backing

CODE	Grain	Holes	Unit
<b>9.45101/25</b>	P60	10	25
<b>9.45102/25</b>	P80	10	25
<b>9.45104/25</b>	P120	10	25
<b>9.45106/25</b>	P180	10	25
<b>9.45107/25</b>	P220	10	25
<b>9.45108/25</b>	P280	10	25
<b>9.45109/25</b>	P320	10	25
<b>9.45100</b>	P40	10	50
<b>9.45101</b>	P60	10	100
<b>9.45102</b>	P80	10	100
<b>9.45104</b>	P120	10	100
<b>9.45106</b>	P180	10	100
<b>9.45107</b>	P220	10	100
<b>9.45108</b>	P280	10	100
<b>9.45109</b>	P320	10	100



### HQ400 film disc 125mm

Abrasive films with polyester backing

CODE	Grain	Holes	Unit
<b>9.45182/25</b>	P80	10	25
<b>9.45184/25</b>	P120	10	25
<b>9.45186/25</b>	P180	10	25
<b>9.45187/25</b>	P220	10	25
<b>9.45188/25</b>	P280	10	25
<b>9.45182</b>	P80	10	100
<b>9.45184</b>	P120	10	100
<b>9.45186</b>	P180	10	100
<b>9.45187</b>	P220	10	100
<b>9.45188</b>	P280	10	100
<b>9.45189</b>	P320	10	100
<b>9.45190</b>	P360	10	100
<b>9.45191</b>	P400	10	100

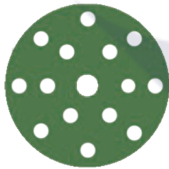
## 3.8 Abrasives



### HQ400 film 80X130

Abrasive films with polyester backing

CODE	Grain	Holes	Unit
9.45141/25	P60	12	25
9.45142/25	P80	12	25
9.45144/25	P120	12	25
9.45146/25	P180	12	25
9.45147/25	P220	12	25
9.45148/25	P280	12	25
9.45149/25	P320	12	25
9.45150/25	P40	12	25
9.45141	P60	12	50
9.45142	P80	12	100
9.45144	P120	12	100
9.45146	P180	12	100
9.45147	P220	12	100
9.45148	P280	12	100
9.45149	P320	12	100
9.45150	P360	12	100



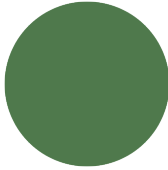
### HQ400 film disc 150mm

Abrasive films with polyester backing

CODE	Grain	Holes	Unit
9.45220	P40	15	50
9.45221	P60	15	50
9.45222	P80	15	100
9.45223	P100	15	100
9.45224	P120	15	100
9.45225	P150	15	100
9.45226	P180	15	100
9.45227	P220	15	100
9.45239	P240	15	100
9.45228	P280	15	100
9.45229	P320	15	100
9.45230	P360	15	100
9.45231	P400	15	100
9.45232	P500	15	100
9.45233	P600	15	100
9.45234	P800	15	100
9.45235	P1000	15	100
9.45236	P1200	15	100
9.45237	P1500	15	100
9.45238	P2000	15	100



### 3.8 Abrasives



#### HQ400 film disc 75mm

Abrasive films with polyester backing

CODE	Grain	Unit
9.45240	P1500	50



#### Abrasives for BigFoot iBrid Nano

CODE	9.45520/100	9.45530/100
Description	Adhesive Disc for Denibbing - Ø35mm - P2000 (100 Pcs)	Adhesive Disc for Denibbing - Ø35mm - P3000 (100 Pcs)



## 3.8 Abrasives



### MP330 multi - purpose abrasive discs Ø150mm (6")

Aluminium oxide top coating

CODE	Grain	Holes	Unit
9.33040	P40	15	50
9.33060	P60	15	50
9.33080	P80	15	50
9.33100	P100	15	100
9.33120	P120	15	100
9.33150	P150	15	100
9.33180	P180	15	100
9.33220	P220	15	100
9.33240	P240	15	100
9.33280	P280	15	100
9.33320	P320	15	100
9.33400	P400	15	100
9.33500	P500	15	100



### MP330 multi - purpose abrasive discs

Aluminium oxide top coating

CODE	Grain	Holes	Unit
9.34120	P120	-	50
9.34180	P180	-	50
9.34240	P240	-	50
9.34320	P320	-	50



### X - CUT foam abrasives with sponge backing

Designed for wet sanding applications

CODE	Description	Grain	Unit
9.45450	Ø75mm (3")	P1500	*
9.45451	Ø75mm (3")	P2000	*
9.45453	Ø75mm (3")	P3000	*
9.45400	Ø125mm (5")	P1500	*
9.45401	Ø125mm (5")	P2000	*
9.45403	Ø125mm (5")	P3000	*
9.45300	Ø150 mm (6")	P1500	*
9.45301	Ø150 mm (6")	P2000	*
9.45303	Ø150 mm (6")	P3000	*

1 carton with 20 discs

### 3. CONSUMABLES AND ACCESSORIES

## 3.8 Abrasives



### Soft roll 114X125mm

Soft pre - cut abrasive roll

CODE	Description	Grain	Unit
9.31180	200 STRISCE	P180	200
9.31240	200 STRISCE	P240	200
9.31280	200 STRISCE	P280	200
9.31320	200 STRISCE	P320	200
9.31400	200 STRISCE	P400	200
9.31500	200 STRISCE	P500	200
9.31600	200 STRISCE	P600	200
9.31800	200 STRISCE	P800	200
9.31000	200 STRISCE	P1000	200









[WWW.RUPES.COM](http://WWW.RUPES.COM)



**RUPES®**

**Scan the QR-Code**

to download the app (Android)  
and access the catalogue in digital format



**Scan the QR-Code**

to download the app (iOS)  
and access the catalogue in digital format



---

**RUPES S.p.A a socio unico**

Via Marconi, 3A, loc. Vermezzo, 20071  
Vermezzo con Zelo (MI) - Italy

**T** +39 - 02.94.69.41

**F** +39 - 02.94.94.10.40

**E** info\_RUPES@RUPES.it

**W** www.RUPES.com

---

**RUPES USA, Inc.**

531 South Taylor Ave  
Louisville, CO 80027

**T** +1- 877-224-5750

**E** info@RUPESusa.com

**W** www.RUPESusa.com

Follow us on:



INDUSTRIAL

Due to its constant desire to improve its products, RUPES S.p.A. reserves the right to make any technical or design modification to its products without prior notice. The manufacturer shall not be responsible for printing errors. This document voids and replaces previous ones.

Cod. 9.Z1173/24/GB