

RUPES®



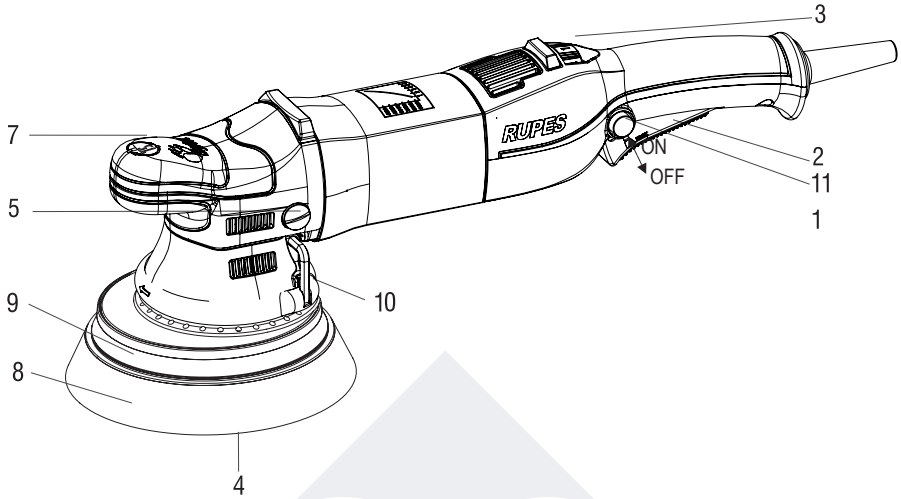
Via Marconi, 3A - Loc. Vermezzo
20071 VERMEZZO CON ZELO (MI) - Italy
Tel. +39 02 946941 - Fax +39 02 94941040
e-mail: info_rupes@rupes.it - web: http://www.rupes.com

LHR21III - LHR15III

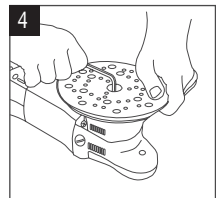
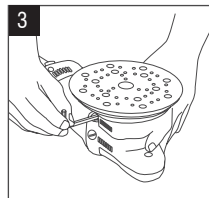
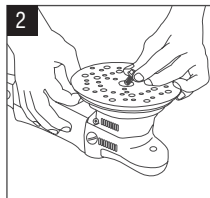
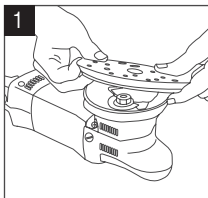
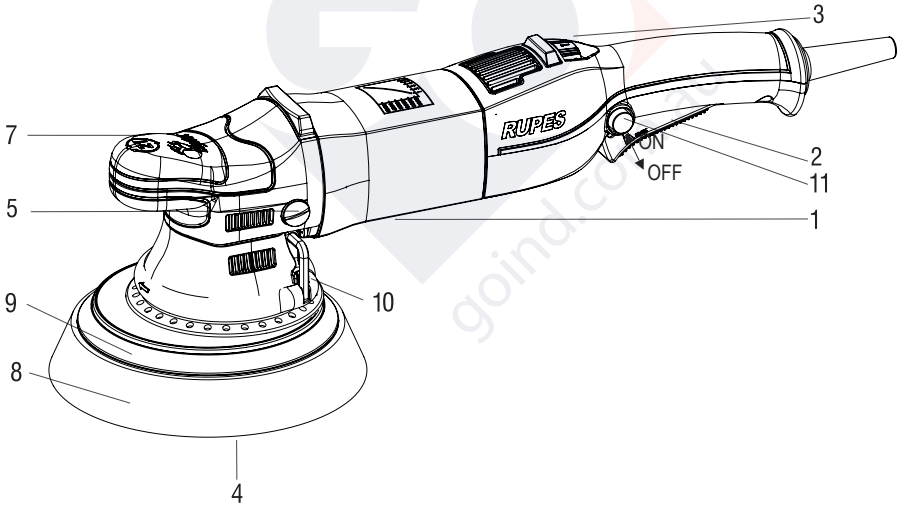
4 - (I)	Lucidatrici	ISTRUZIONI ORIGINALI PER L'USO E LA MANUTENZIONE
6 - (GB)	Polisher	OPERATING AND MAINTENANCE INSTRUCTIONS
8 - (F)	Lustreuse	MANUEL D'UTILISATION ET D'ENTRETIEN
10 - (D)	Poliermaschine	ORIGINAL BEDIENUNGS-UND WARTUNGSANLEITUNG
12 - (E)	Pulidoras	INSTRUCCIONES DE USO Y ANUTENCION
14 - (P)	Máquina de polir	INSTRUÇÕES PARA LIGAÇÃO, FUNCIONAMENTO E MANUTENÇÃO
16 - (NL)	Haakse polijstmachine	AANWIJZINGEN VOOR HET GEBRUIK EN HET ONDERHOUD ORIGINEEL
18 - (FI)	Kiillotuskone	KÄYTTÖ- JA HUOLTO-OHJEET
20 - (DK)	Polermaskine	VEJLEDNING TIL OPSTART, BRUG OG VEDLIGEHOLDELSE
22 - (S)	Polermaskin	ANVISNINGAR FÖR START, ANVÄNDNING OCH UNDERHÅLL
24 - (RUS)	Полировальная машина	ИНСТРУКЦИИ ПО ЭКСПЛУАТАЦИИ И ТЕХНИЧЕСКОМУ ОБСЛУЖИВАНИЮ
26 - (PL)	Polerka kałowa	INSTRUKCJA OBSŁUGI I KONSERWACJI
28 - (GR)	Στιλβωτικό μηχανήμα	ΟΔΗΓΙΕΣ ΛΕΙΤΟΥΡΓΙΑΣ ΚΑΙ ΣΥΝΤΗΡΗΣΗΣ
30 - (BG)	Машина за полиране	ИНСТРУКЦИИ ЗА ЕКСПЛОАТАЦИЯ И ПОДДРЪЖКА
32 - (CZ)	Leštička	NÁVOD K POUŽITÍ A ÚDRŽBĚ
34 - (ET)	Poleerija	KASUTAMIS- JA HOOLDUSJUHEND
36 - (HI)	पॉलिशर	संचालन और रखरखाव संबंधी निर्देश
38 - (HU)	Csiszoló	HASZNÁLATI ÉS KARBANTARTÁSI ÚTMUTATÓ
40 - (LV)	Pulētājs	EKSPLUATĀCIJAS UN APKOPES NORĀDĪJUMI
42 - (LT)	Poliruoklis	VALDYMO IR PRIEŽIŪROS INSTRUKCIJOS
44 - (RO)	Mașină de lustruit	NSTRUCȚIUNI DE UTILIZARE ȘI ÎNTREȚINERE
46 - (SL)	Stroj za poliranje	NAVODILA ZA UPORABO IN VZDRŽEVANJE
48 - (SK)	Uhlový leštič	POKYNY NA PREVÁDZKU A ÚDRŽBU
50 - (TR)	Cila Makinesi	KULLANIM VE BAKIM TALİMATLARI
52 - (AR)	جهاز للصفل	إرشادات التشغيل والصيانة
54 - (CIN)	拋光机	操作和维护说明
56 - (JP)	ポリッシャー	取り扱い・メンテナンス説明書















LHR 15III



LHR 21III



	Warning symbol/ Warning message	ISO7010 - W001
	Read instruction manual	ISO7010 - M002
	Wear eye protection	ISO7010 - M004
	Wear ear protection	ISO7010 - M003
	Wear a mask	ISO7010 - M016
	Wear a gloves	ISO7010 - M009
	CE compliant	
	EurAsian Mark	
	Italian Quality Mark	
	C-Tick Mark	
	Disposal of decommissioned	
	Arrow	Act in the direction indicated by the arrow direction

TECHNICAL SPECIFICATIONS

TYPE	LHR 21III	LHR 15III
Ø POLISHING FOAM mm	180	150
Ø BACKING PAD mm	150	125
Ø ORBIT mm	21	15
POWER W	500	500
R.P.M. /min.	3000 ÷ 4500	3000 ÷ 5200
WEIGHT according to EPTA-Procedure 01/2003 Kg	2,70	2,60
ELECTRONIC SPEED CONTROL	•	•
INSULATION CLASS	□ / II	□ / II

The values shown are based on a nominal voltage of 230V/50Hz. In the case of voltages and frequencies of different power values may vary. Refer to the label technical specifications to the nominal values of the tool.

WARNINGS

The safety and accident prevention instructions are reported in the “**SAFETY INSTRUCTION**” booklet which is an integral part of these documents. This **operating instructions manual** indicates the additional information required for the specific use of the tool.

CORRECT USAGE

This tool is designed to be used as a polisher. Read all the warnings, instructions, indications provided on drawings and specifications supplied with this tool. Failure to comply with all the instructions provided below may cause electrical shocks, fire and/or serious injuries.

This tool is not intended to be used for smoothing, metal brushing and cutting operations. The use of this tool for unintended applications may cause hazards and injuries to people.

The tool must be used with accessories that have been specifically designed or recommended by the manufacturer. The fixing of the accessory to the tool does not guarantee a safe operation.

The rated speed of the accessories must be at least equivalent to the maximum speed specified on the tool. Using the accessories at speeds above the rated one, may cause them to break or be projected into the air.


The external diameter and thickness of the accessories must match the specifications of the tool. Accessories with incorrect dimensions cannot be adequately protected or controlled.

The configuration of accessories must match the tool. The use of accessories that cannot be perfectly fitted on the

tool may result in imbalance, excessive vibrations and in the impossibility of controlling the tool.

Do not use damaged accessories. Before use, inspect all the accessories. Inspect the supporting pads and verify there are no cracks, tears or excessive wear. If the tool or accessory has fallen, verify that it is not damaged or install a new accessory. After inspecting or installing an accessory, test the operation of the tool at maximum speed and without load for one minute, keeping at a safety distance. If the accessories are damaged, they will break during this test.

STARTING UP

 Voltage and power frequency must match the data displayed on the identification plate (1). Make sure that tool is switched off before plug is connected.

TOOL ASSEMBLY

Position the cap (7) on the gearbox such that the holes for mounting the screws (5) are aligned with those on the gearbox.

ACCESSORIES ASSEMBLY

BACKING PAD (Pic 1 to Pic 4)

- Place the disc pad (9) in the centre (4);
- slightly turn the disc pad (9) until it is fixed to the screw;
- tighten the disc pad fixing screw using the supplied disc pad Allen wrench (10). Do not tighten the disc pad if it is in the wrong position.

POLISHING FOAM

Apply pressure on polishing pad to join pad to plate (9).

START AND STOPPING

- **Starting:** push the lever of the switch (2) towards the body

of the tool; if the tool is to be locked in the ON position, press button (11) at the same time and keep it pressed while releasing lever (2), thus locking the switch.

- **Stopping:** release the lever of the switch or, if locked in position, push the lever to release the lock button.



The tool continues to rotate after it is turned off.



Do not empty the tool with the polishing pad still mounted. In this way, the polishing pad may be subject to lacerations

SELECTING RPM

The speed can be adjusted in two ways: by means of the variable actuation switch (2), by means of the adjustment wheel fitted on the upper part of the machine (3). Adjustment by means of the wheel (3) affects the adjustment made using the variable actuation switch (2), determining the maximum speed of the motor. The speed must be selected according to the characteristics of the pads and those of the material to be machined.

ACCESSORIES DISASSEMBLY

BACKING PAD

Unscrew pad's (4-9) mounting screw using the wrench (10).

POLISHING FOAM

Remove the polishing foam used and apply the new one with pressing on the backing pad (9).

ALLOWED ACCESSORIES

LHR 21III: polishing foam Ø 180 mm for backing pad Ø 150 mm.

LHR 15III: polishing foam Ø 150 mm for backing pad Ø 125 mm.

NOISE EMISSION VALUES

Detected noise emission values comply with the following directives:

EN 62841

		LHR 21III	LHR 15III
SOUND PRESSURE LEVEL	dB(A)	78.5	78.5
SOUND POWER LEVEL	dB(A)	89.5	89.5
UNCERTAINTY	K	3	3



Use ear protection!

VIBRATION EMISSION VALUES

Detected vibration emission values comply with the following directives:

EN 62841

		LHR 21III	LHR 15III
3 AXIS VIBRATION LEVEL	m/s ²	3.65	3.78
UNCERTAINTY	K	0.40	0.42

Displayed emission values are comparative and are to be employed for a provisional assessment of the operator's risk exposure during the work period. Appropriate evaluation of work period must also include tool's idle and stop periods. These emission values represent the tool's main applications. If the tool is used for other applications, with other accessories, or if it does not undergo regular maintenance, emission values can significantly increase during operations.



Danger! The indicated measurements refer to new power tools. Daily usage causes the noise and vibration values to change.

MAINTENANCE

All maintenance operations are carried out with the power supply disconnected.

At the end of each work session, or when required, remove any dust from the body of the tool using a jet of compressed air, paying particular attention to the motor ventilation slots.

No other maintenance operations must be undertaken by the user.

Maintenance and cleaning of the inner parts, like brushes, ball bearings, gears etc. or others, must be carried out only by an authorized customer-service workshop.

DISPOSAL (WEEE DIRECTIVE)



For EC countries only: According to the European Directive on Waste from electrical and electronic equipment and its implementation in conformity with national standards, exhausted electrical equipment must be collected separately, in order to be recycled in an environmentally friendly way. The product, when it reaches the end of its life, must not be dispersed in the environment or thrown away as household waste. It must be disposed at authorized recycling centres (contact your local authorities to know where to dispose of the product according to the law). The correct disposal of the product contributes to the health and preservation of the environment.

Illegal disposal of the product will entail penalties against the offenders.

CONFORMITY DECLARATION

We declare on our responsibility that the represented tool is in conformity with the directives:

2006/42/CE, 2014/35/CE, 2014/30/CE, 2011/65/CE.

The tests have been carried out in accordance with standard:

EN 62841-1:2015

EN 62841-2-4:2014

EN 55014-1: 2006 + A1: 2009 + A2: 2011

EN 55014-2: 1997 + A1: 2001 + A2: 2008

EN 61000-3-2: 2014

EN 61000-3-3: 2013

EN 62233: 2008

EN 50581:2012

RUPES S.p.A

THE PRESIDENT

Valentino

Vermezzo con Zelo (MI)

20/09/2018

Technical file at:

RUPES SpA
Via Marconi, 3A - Loc. Vermezzo
20071 VERMEZZO CON ZELO (MI) - Italy



RUPES S.p.A.

Via Marconi, 3A - Loc. Vermezzo
20071 VERMEZZO CON ZELO (MI) - Italy
Tel. +39 02 946941
Fax +39 02 94941040

Uff. Vendite e assistenza clienti:
Tel. +39 02 94694312

e-mail: info_rupes@rupes.it
web: <http://www.rupes.com>