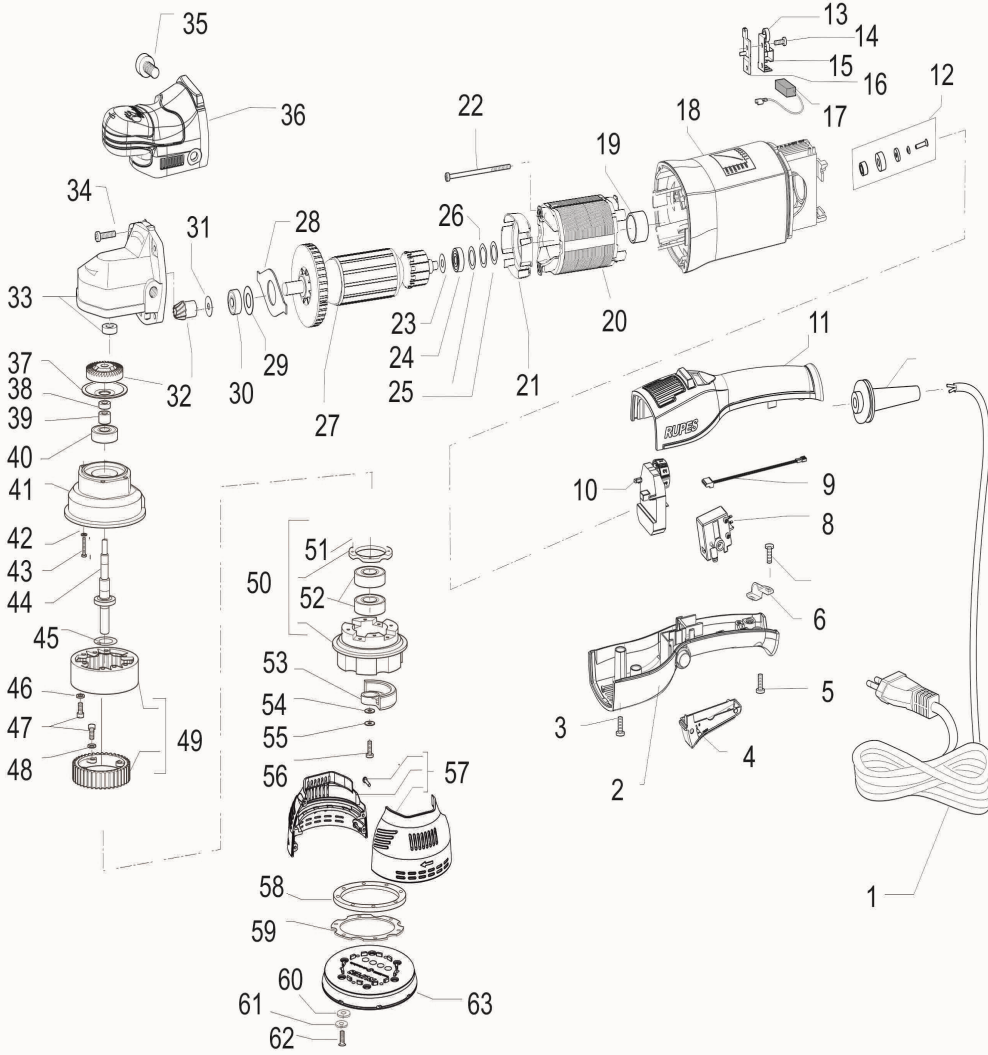


RUPES

LUCIDATRICE ROTOECCENTRICA GEAR DRIVEN POLISHER

LK900E



ID	ITEM	DESCRIPTION
001	9C2X0,8VUS9O	CABLE 2x18AWG plug USA polarized 9mt. + eye
001	9C2X1,0N489FOR	CABLE 2X1 (plug Schuko d4,8) mt.9 H07RN-F FLEX
001	9C2X1,0NAU9FOR	CABLE 2X1 (plug Australia) H07RN-F mt.9
001	9C2X1,0NGB9FOR	CABLE 2X1 (plug UK) with fork H07RN-F CENTRAL METAL PLUG mt.9
001	9C2X1,0R409FOR	CABLE 2X1 (plug D4) H07RN-F mt.9 with fork (only Swiss)
001	9C2X1,25VJA9FOR	CABLE 2x1,25 (plug JAPAN) mt.9 with fork
002	44.374/C	COMPLETE LOWER HANDLE
002	44.374/C	COMPLETE LOWER HANDLE
003	9.552	SCREW 3,9x25 (7x1") T.C.C.
003	9.552	SCREW 3,9x25 (7x1") T.C.C.
004	38.374/C	SWITCH BUTTON
004	38.374/C	SWITCH BUTTON
005	9.650	SCREW 3,5x19 (6x3/4") T.C.C.
005	9.650	SCREW 3,5x19 (6x3/4") T.C.C.
006	442.55	CABLE CLAMP
006	442.55	CABLE CLAMP
007	9.660	SCREW 3,9x16 (7x5/8") T.C.C.
007	9.660	SCREW 3,9x16 (7x5/8") T.C.C.
008	45.372	GRADUAL SWITCH
008	45.372	GRADUAL SWITCH
009	408.374/C	SWITCH WIRING
009	408.374/C	SWITCH WIRING
010	400.379/C	ELECTRONIC MODULE 50Hz LK900E
010	400.379/60HZ/C	ELECTRONIC MODULE 60Hz LK900E
010	400.379/C	ELECTRONIC MODULE 50Hz LK900E
010	400.379/60HZ/C	ELECTRONIC MODULE 60Hz LK900E
011	441.374/C	IMPUGNATURA GOMMATA SUPERIORE COMPLETA
011	441.374/C	IMPUGNATURA GOMMATA SUPERIORE COMPLETA
012	405.322/C	COMPLETE MAGNET
012	405.322/C	COMPLETE MAGNET
013	461.105	SPRING BRUSH HOLDER BA21 BURNISHED
013	461.105	SPRING BRUSH HOLDER BA21 BURNISHED
014	9.551	SCREW 2,9x13 (4x1/2") T.C.C.
014	9.551	SCREW 2,9x13 (4x1/2") T.C.C.
015	46.105	BRUSH HOLDER BA215-LH18ENS
015	46.105	BRUSH HOLDER BA215-LH18ENS
016	462.105	BRUSH HOLDER PLATE
016	462.105	BRUSH HOLDER PLATE
017	47.105/10	BLISTER WITH 10 PC. BRUSHES BA215
017	47.105/10	BLISTER WITH 10 PC. BRUSHES BA215
018	31.379	CORPO MOTORE LK900E (tampografato)
018	31.379	CORPO MOTORE LK900E (tampografato)
019	268.105	BEARING CAP
019	268.105	BEARING CAP
020	2.374/120S	STATOR (V.120) LK900
020	2.374/230S/C	STATOR (230V) LK900E
020	2.374/120S	STATOR (V.120) LK900
020	2.374/230S/C	STATOR (230V) LK900E
021	73.322	AIR BULKHEAD
021	73.322	AIR BULKHEAD
022	9.787	SCREW 2,9x70 T.C.C.
022	9.787	SCREW 2,9x70 T.C.C.
023	9.318	STEEL WASHER d15 x 6,1 s 0,15
023	9.318	STEEL WASHER d15 x 6,1 s 0,15
024	9.14/10	BEARING 626ZZ
024	9.14/10	BEARING 626ZZ

ID	ITEM	DESCRIPTION
025	9.306	STEEL WASHER d18 x 12,3 s 0,3
025	9.306	STEEL WASHER d18 x 12,3 s 0,3
026	9.204	WASHER LMKAS 19 A .d18,8x13,2 s 0,2
026	9.204	WASHER LMKAS 19 A .d18,8x13,2 s 0,2
027	1.379/230S/C	ROTOR (230V) LK900E
027	1.379/120S/C	ROTOR (120V) LK900E
027	1.379/230S/C	ROTOR (230V) LK900E
027	1.379/120S/C	ROTOR (120V) LK900E
028	35.374/C	FLAT SPRING
028	35.374/C	FLAT SPRING
029	9.298	STEEL WASHER d15 x 9,1 s 0,5
029	9.298	STEEL WASHER d15 x 9,1 s 0,5
030	9.187/10	BEARING 629 2BRS R66 FA227
030	9.187/10	BEARING 629 2BRS R66 FA227
031	9.218	STEEL WASHER d20 x 8,1 SP 0,1
031	9.218	STEEL WASHER d20 x 8,1 SP 0,1
032	50.105	GEAR SET
032	50.105	GEAR SET
033	32.379/C	SCATOLA INGRANAGGI LK900E CON CUSCINETTO
033	32.379/C	SCATOLA INGRANAGGI LK900E CON CUSCINETTO
034	9.679	SCREW 4,2x25 (8x1") T.C.C.
034	9.679	SCREW 4,2x25 (8x1") T.C.C.
036	815.379/C	LK900E COMPLETE FRONT CAP
036	815.379/C	LK900E COMPLETE FRONT CAP
037	35.105	FLANGE PLATE BA21-SL41
037	35.105	FLANGE PLATE BA21-SL41
038	54.116	SPACER
038	54.116	SPACER
039	541.116	SPACER
039	541.116	SPACER
040	9.190/10	BEARING 6201 DDW1CM D ENSS6
040	9.190/10	BEARING 6201 DDW1CM D ENSS6
041	33.116/C	GEAR FLANGE
041	33.116/C	GEAR FLANGE
042	9.329	TOOTHED WASHER
042	9.329	TOOTHED WASHER
043	9.628	SCREW M4 x 35 T.G.S. BURNISHED
043	9.628	SCREW M4 x 35 T.G.S. BURNISHED
044	51.379	STEEL ECC. SPINDLE SHAFT
044	51.379	STEEL ECC. SPINDLE SHAFT
046	9.219	WASHER d 4x9X0,8
046	9.219	WASHER d 4x9X0,8
047	9.6156	SCREW M4 x 12 UNI ISO 7380
047	9.6156	SCREW M4 x 12 UNI ISO 7380
048	9.219	WASHER d 4x9X0,8
048	9.219	WASHER d 4x9X0,8
049	52.379/C	GEAR COUPLE FOR LK900E
049	52.379/C	GEAR COUPLE FOR LK900E
050	331.379/C	COMPLETE GEAR HOUSING LK900
050	331.379/C	COMPLETE GEAR HOUSING LK900
052	9.190/10	BEARING 6201 DDW1CM D ENSS6
052	9.190/10	BEARING 6201 DDW1CM D ENSS6
053	57.379	COUNTERWEIGHT
053	57.379	COUNTERWEIGHT
054	9.1807	WASHER d 15x5,5x1,6 UNI 6593
054	9.1807	WASHER d 15x5,5x1,6 UNI 6593

ID	ITEM	DESCRIPTION
055	9.1843	RANELLA CONTACT d 5,1 x D 12 ZINC.
055	9.1843	RANELLA CONTACT d 5,1 x D 12 ZINC.
056	9.616	SCREW M5 x 14 TC + C/D STEEL 8.8 T.P.
056	9.616	SCREW M5 x 14 TC + C/D STEEL 8.8 T.P.
057	65.379/C	GEAR COVER
057	65.379/C	GEAR COVER
058	70.379	FELT RING LK
058	70.379	FELT RING LK
059	68.379/C	KIT GUARNIZIONE + VITI + RONDELLE per cod.981.100
059	68.379/C	KIT GUARNIZIONE + VITI + RONDELLE per cod.981.100
060	9.393	STEEL WASHER d12 x 4 s 1
060	9.393	STEEL WASHER d12 x 4 s 1
061	9.1808	RANELLA CONTACT d 4,1 x D 10 UNI 6602
061	9.1808	RANELLA CONTACT d 4,1 x D 10 UNI 6602
062	9.614	SCRE M4 x 12 T.C.C. d7,7 BRN 8.8
062	9.614	SCRE M4 x 12 T.C.C. d7,7 BRN 8.8
063	981.089/C	CONF. DA 1 PLATORELLO Ø 150mm-6" VELCRO per LK900E/DLX
063	980.037	Ø 125mm-5" BACKING PAD for gear driven polisher LK900E
063	981.089/C	CONF. DA 1 PLATORELLO Ø 150mm-6" VELCRO per LK900E/DLX
063	980.037	Ø 125mm-5" BACKING PAD for gear driven polisher LK900E
2.*	812.91	SCREW M8 x 15 T.C.IN NYLON A T.
2.*	812.91	SCREW M8 x 15 T.C.IN NYLON A T.
306	9.306	STEEL WASHER d18 x 12,3 s 0,3
306	9.306	STEEL WASHER d18 x 12,3 s 0,3