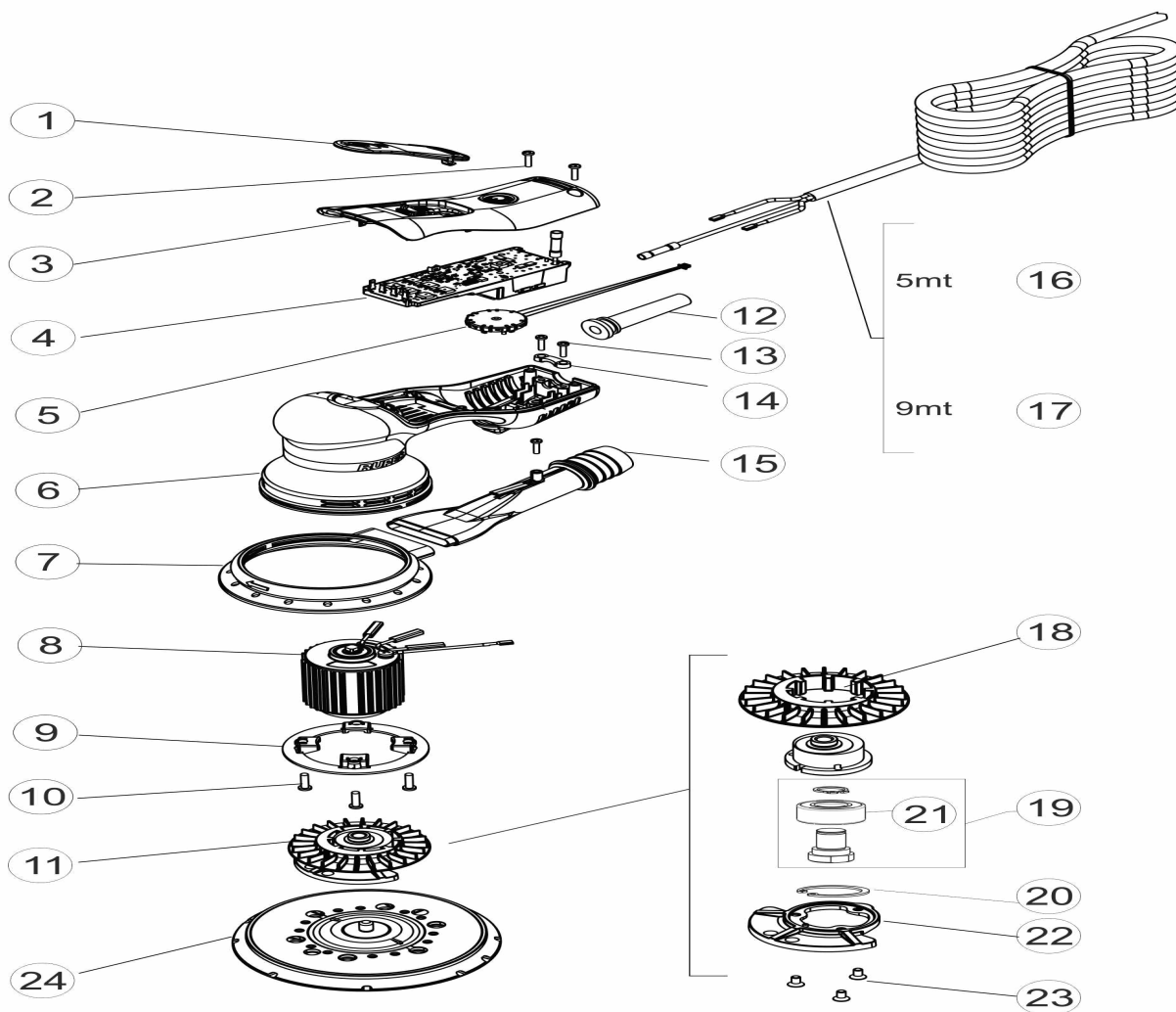


RUPES

LEVIGATRICE ROTORBITALE BRUSHLESS
 BRUSHLESS RANDOM-ORBITAL SANDER

RX253A
RX256A



ID	ITEM	DESCRIPTION
001	381.413/C	SKORPIO RX2 LEVER 3mm ORBIT
001	38.413/C	SKORPIO RX2 LEVER 6mm ORBIT
002	9.578	SCREW 2,9x13 (4x1/2") T.C.C. BURNISHED WITHOUT POINT
003	34.413/C	MOTOR BODY COVER RX
004	400.413/C	ELECTRONIC MODULE RX2
005	409.410/C	POTENZIOMETER RX
006	31.413/C	MOTOR BODY RX2
007	65.410/C	RUBBER SHROUD RX
008	3.413/230/C	COMPLETE ENGINE RX
009	331.410/C	ENGINE BULKHEAD RX
010	9.734	SCREW X PLASTIC TC+PZ40x16SP
011	58.411/C	ECCENTRIC ASSEMBLY RX156A
011	58.410/C	ECCENTRIC ASSEMBLY RX153A
012	42.105	CABLE SLEEVE BA21-BR51
013	9.578	SCREW 2,9x13 (4x1/2") T.C.C. BURNISHED WITHOUT POINT
014	444.14	CABLE CLAMP NYLON
014	444.14/50	CABLE CLAMP NYLON
015	67.413/C	BOCCHETTA ASPIRAZIONE SKORPIO E COMPLETA
016	9C3X1,0N485	CAVO 3x1 (spina d 4,8) mt.5 CAVO EU SKORPIO E
016	9C3X1,0NAU5	CAVO 3x1 (spina Australia) mt.5 SKORPIO E
016	9C3X1,0NCH5	CAVO 3x1 (spina Svizzera) mt.5 SKORPIO E
016	9C3X1,0NGB5	CAVO 3x1 (spina Inglese) mt.5 SKORPIO E
016	9C3X1,0NJA5	CAVO 3x1 (spina Japan) mt.5 SKORPIO E
016	9C3X1,0NUS5	CAVO 3x1 (spina America) mt.5 SKORPIO E
017	9C3X1,0N489	CAVO 3x1 (spina d 4,8) mt.9 CAVO EU SKORPIO E
017	9C3X1,0NAU9	CAVO 3x1 (spina Australia) mt.9 CAVO EU SKORPIO E
017	9C3X1,0NCH9	CAVO 3x1 (spina Svizzera) mt.9 CAVO EU SKORPIO E
017	9C3X1,0NGB9	CAVO 3x1 (spina Inglese) mt.9 CAVO EU SKORPIO E
017	9C3X1,0NJA9	CAVO 3x1 (spina Japan) mt.9 CAVO EU SKORPIO E
017	9C3X1,0NUS9	CAVO 3x1 (spina America) mt.9 CAVO EU SKORPIO E
018	15.411/C	FUN RX156A
018	15.410/C	FUN RX153A
019	56.410/C	ECCENTRIC SHAFT ASSEMBLY RX
020	9.5017	SEEGER RING
021	9.907/10	BEARING DOUBLE CROWN 10pcs
022	57.411/C	COUNTERWEIGHT RX156A
022	57.410/C	COUNTERWEIGHT RX153A
023	9.609	SCREW M4 x 8 T.S.P. BURNISHED
024	981.600	Ø 150mm PAD VELCRO MULTIHOLE 5/16" HARD-H 12mm
024	981.600/48	BOX 48pcs. Ø 150mm PAD VELCRO MULTIHOLE 5/16" HARD-H 12mm