

RUPES®



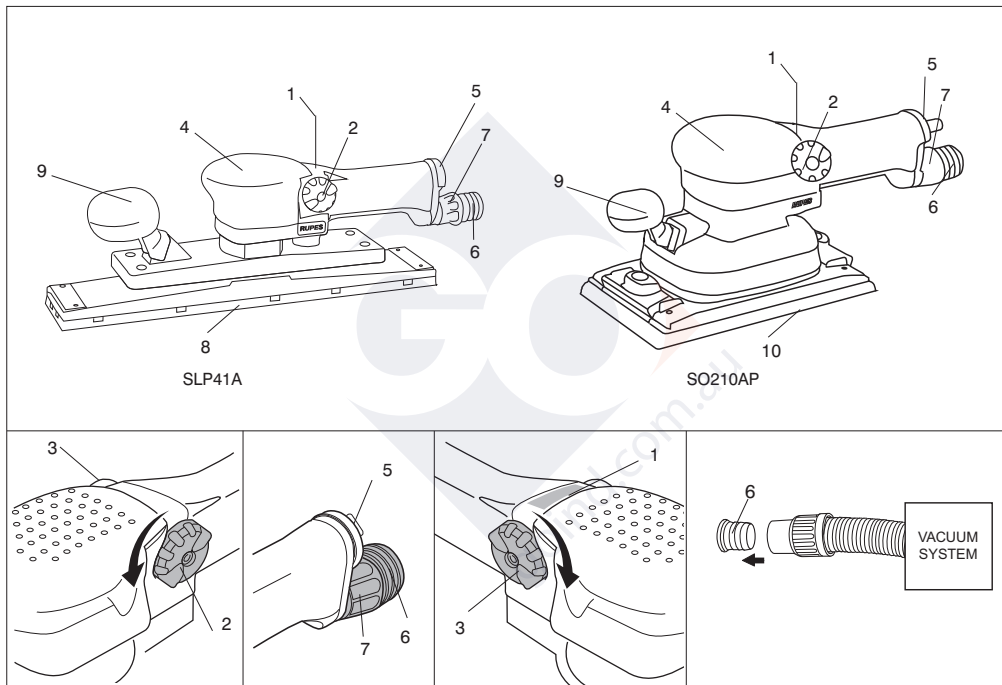
Via Marconi, 3A - 20080 VERMEZZO (MI) - Italy Tel. 02/946941 - Fax 02/94941040
e-mail: info_rupes@rupes.it - web: www.rupes.com

SLP41A - SO210AP

Levigatrici orbitali pneumatiche lunghe con aspirazione
Pneumatic long orbital sanders with dust extraction
Ponceuses orbitales pneumatiques longues avec aspiration
Pneumatische Schwingschleifer-feile mit Staubabsaugung
Lijadoras orbitales neumáticas largas con aspiración
Pneumatisch vlakschuurmachine met stofafzuiging
Шлифовальная орбитальная машина с пылеудалением

ISTRUZIONI PER L'USO E LA MANUTENZIONE
OPERATING AND MAINTENANCE INSTRUCTIONS
NOTICE D'EMPLOI ET D'ENTRETIEN
BEDIENUNGS-UND WARTUNGSANLEITUNG
INSTRUCCIONES DE USO Y MANUTENCION
ИНСТРУКЦИЯ ПО ЭКСПЛУАТАЦИИ И ОБСЛУЖИВАНИЮ





TECHNICAL DATA**ENGLISH**

	Warning symbol	ISO7010 - W001
	Read instruction manual/ warning message	ISO7010 - M002
	Wear eye protection	ISO7010 - M004
	Wear ear protection	ISO7010 - M003
	Wear a mask	ISO7010 - M016
	CE compliant	ISO7010 - M009
	EurAsian Mark	
\emptyset	Diameter	Size of drill bits, grindings wheels...
n_0	No load speed	Rotation speed at no load
.../min.	Revolution or reciprocation per minute	Revolutions, strokes, surface speed, orbits.. per minute
	Arrow	Action in the direction of arrow

TYPE	SLP41A	SO210AP
WORKING PRESSURE Bar	6	6
AIR CONSUMPTION l/min	400	380
SPEED CONTROL	YES	YES
RPM/min	4.000 ÷ 10.000	3.500 ÷ 9.500
ORBITAL DIAMETER mm	4,8	3
ORBITAL RPM	20.000	19.000
PLATE TYPE	DRILLER VELCROED RUBBER	DRILLER AND VELCROED RUBBER
	HOOK IT	HOOK IT
PLATE DIMENSIONS mm	400 x 70	225 x 115
EXTRACTION SYSTEM	YES	YES
WEIGHT Kg	2,4	2,4

GENERAL WARNINGS

The tool must be connected to a suitable dust extraction system (not supplied).

SAFETY AND ACCIDENT PREVENTION INSTRUCTIONS

The safety and accident prevention instructions are reported in the "SAFETY INSTRUCTION" booklet which forms an integral part of these documents; the operating instructions indicate the additional information required specifically for use of the tool.

Never use the tools without the safety guards.

Any operations carried out on the tool must be effected with the tool disconnected.

Before starting the tool, ensure that it is held tightly and not in contact with the work surface.

The electric tool must be connect to a suitable dust extraction unit and applicable safety regulations must be observed if dusts dangerous to health are likely to occur during sanding.

Due to risks that may arise during sanding, we recommend the constant use of P.S.D. (personal safety devices such as gloves, headphones, goggles, face masks, etc.) according to laws in force to prevent or reduce accident probability.

Warning! Carry out the lubrication process outlined on page 10, in the maintenance paragraph. The appliance continues to work for a few seconds after it has been switched off.

CORRECT USAGE

The sanders are designed for sanding wood, plastic, composite materials, paint/varnish, filling material and similar materials.

Metal and materials with an asbestos content must not be processed with these tools.

The tools must not be damp nor operated in a damp environment for electrical safety reasons.

The tools may only be used for dry sanding.

Make sure the work piece is sufficiently fastened.

In the event of improper use, the user is fully liable for any damages or accidents.

PARTS OF THE TOOL

- 1 - Identification plate
- 2 - On/off switch
- 3 - Speed control
- 4 - Tool body
- 5 - Compressed air connection
- 6 - Suction tube connection int. Ø 29 mm
- 7 - Suction control
- 8 - Velcro plate abrasive paper 400 x 70 mm (SLP41A)
- 9 - Auxiliary handle
- 10 - Velcro plate abrasive paper 225 x 1158 mm (SO210AP)

STARTING UP

Before starting-up the tool, ensure that:

- the packaging is complete and does not show signs of having been damaged during storage or transport;
- the tool is complete; check that the number and type of components comply with that reported in this instruction booklet;
- the available compressed air production and distribution plant is capable of satisfying the requirements reported on the tool's identification plate.

ASSEMBLING THE TOOL

Assemble the compressed air connection (not supplied) by screwing it into its seating (5).

COMPRESSED AIR CONNECTION

The tool is supplied without the compressed air connection; the user can use either a quick release coupling or hose type connection according to his needs purke that have an hole air passing mm 8. In the latter case the air line must be fixed to the nozzle by a hose clip.

FITTING ABRASIVE PAPER SHEETS

Press the abrasive paper sheet into the plate ensuring that the holes in the paper coincided with extraction holes.

BEFORE STARTING THE TOOL

Ensure that:

- the compressed air feed line and connection are in perfect working order;
- the start switch (2) is working properly. This must be done with the air supply switched off;
- all the components of the tool are mounted correctly and do not show any signs of damage.

STARTING AND STOPPING

- Starting: rotate knob (2) in the direction indicated by the arrow.
- Stopping: release the knob.

TEST RUN

Start the tool and check that there are no unusual vibration.

Otherwise switch-off the tool immediately and eliminate the cause.

SELECTING THE RPM

The rpm can be adjusted by rotating the knob (3). The choice of speed depends on the characteristics of the abrasive paper sheets and the material to be worked.

SUCTION FLOW CONTROL

The suction flow can be adjusted by rotating ring-nut (7).

10

REPLACING THE ABRASIVE PAPER SHEETS

- Rip off the used paper;
- press the new velcro backed paper in position, ensuring that the holes in the paper coincide with the suction holes in the plate.

USABLE DISCS

SLP41A

400 x 70 mm punched velcroed sheets of abrasive paper, Hook IT.

SO210AP

225 x 115 mm punched velcroed sheets of abrasive paper, Hook IT.

MAINTENANCE

All maintenance operations are carried out with the tool disconnected from the compressed air supply.

At the end of each work session, or when required, remove any dust from the body of the tool using a jet of compressed air.

Lubricate the machine regularly (every 50 hours of operation) by inserting 2/3 drops of specific oil (synthetic oil without silicone, ISO 32) into the compressed air connection, keeping the device in a vertical position, with the connection facing upwards. After this operation, connect the machine to the power supply and set it in motion for a few seconds. Lubricate the machine as described above before storing it for long periods of inactivity. All damages deriving from incorrect or inadequate lubrication are excluded from the warranty.

No other maintenance operations must be undertaken by the user.

Maintenance and cleaning of the inner parts, must be carried out only by an authorized customer-service workshop.

NOISE / MEAN ACCELERATION VALUE

The noise level produced and the mean quadratic acceleration value are measured according to regulation **UNI EN ISO 15744 - EN ISO 28927**.

	Sound pressure level / Sound power level			3 axis vibration level	
	L _{PA}	L _{WA}	Uncertainty	a _h	Uncertainty
	dB(A)			m/s ²	
SLP41A	86	97	3	5,5	1,5
210AP	86	97	3	5,5	1,5



Danger! The indicate measurements refer to new power tools.
Daily usacases the noise and vibration values to change.



Use ear protection!

Displayed emission values are comparative and are to be employed for a provisional assessment of the operator's risk exposure during the work period. Appropriate evaluation of work period must also include tool's idle and stop periods. These emission values represent the tool's main applications. If the tool is used for other applications, with other accessories, or if it does not undergo regular maintenance, emission values can significantly increase during operations.

DISPOSAL

At the end of its useful life, the product must not be released into the environment or thrown away as domestic waste, but must be disposed of at authorised recycling centres (contact the relevant local authorities for a list of places where the product may be disposed of according to the law). Disposing of the product correctly contributes to protecting human health and safeguarding the environment. Any illegitimate disposal of the product will be punishable by law.

CONFORMITY DECLARATION

We declared on our responsibility that the **hand-held non-electric** power tool, which is mentioned in the present operating manual, is in conformity with the Essential Requirements of Safety of the following Directive:
2006/42/CE Machinery

The tests have been carried out in accordance with following Standards:
UNI EN ISO 11148-8:2012 - UNI EN ISO 15744 - UNI EN ISO 28927

Technical file at:
RUPES S.p.A.
Via Marconi, 3A
20080 VERMEZZO (Mi) - Italy
Vermezzo (MI), 03/02/2014

RUPES S.p.A.
IL PRESIDENTE

G. Valentini



RUPES S.p.A.
Via Marconi, 3A
20080 VERMEZZO (Mi) - Italy
Tel. 02/946941
Fax 02/94941040

Uff. Vendite e assistenza clienti
Tel. 02/94694312

e-mail: info_rupes@rupes.it
web: <http://www.rupes.com>