

Owners Manual

Product Code: 2906T

**MADE FOR THE
TRADE**

TQ TRADEQUIP
the trusted brand in equipment

**HYDRAULIC
GARAGE JACK**



**THIS JACK IS A LIFTING & LOWERING DEVICE ONLY
IT IS DESIGNED FOR LIFTING PART OF THE TOTAL VEHICLE
DO NOT MOVE OR DOLLY THE VEHICLE WHILST ON THE JACK
DO NOT USE THE JACK TO SUPPORT THE VEHICLE**

This jack complies with Mandatory Australian Standard AS 2615:2016

Specifications:

- Safe Working Capacity: 3,000kg
- Minimum Height: 118mm
- Maximum Height: 488mm
- Nett Weight: 43kg
- Carton: 740 x 410 x 195mm
- Weight: 45kg

About the TradeQuip brand

The 'TradeQuip' brand of workshop equipment, is designed for use in a demanding workshop environment by professional users. With proven and trusted "Made for the Trade" reliability, 'TradeQuip' branded products offer the very best in performance for an affordable price. All backed by a 1year trade guarantee across 1,000+ distributors Australia wide.

TQ TRADEQUIP
the trusted brand in equipment

TQ PRO
Trusted by serious professionals

BORUM
INDUSTRIAL WORKSHOP EQUIPMENT

WARNING

IMPORTANT: READ ALL INSTRUCTIONS BEFORE USE



WARNING

The instructions and warnings contained in this manual should be read and understood before using or operating this equipment. Do not allow anyone to use or operate this equipment until they have read this manual and have developed a thorough understanding of how this equipment works. Failure to observe any of the instructions contained in the manual could result in severe personal injury to the user or bystanders, or cause damage to the equipment and property. Keep this manual in a convenient and safe place for future reference.

Whilst every effort has been made to ensure accuracy of information contained in this manual, the TQB Brands Pty Ltd policy of continuous improvement determines the right to make modifications without prior warning.

We recommend using...



4,000kg Jack Stands

Product Code: 1148T

Available from your local TQB Brands distributor...

CONTENT

| | |
|-----------------------------------------------------|----|
| WARNING | 2 |
| CONTENT | 2 |
| SAFETY INSTRUCTIONS | 3 |
| WARNING DIAGRAM | 4 |
| ASSEMBLY, OPERATION, PREVENTITIVE MAINTENANCE | 5 |
| TROUBLESHOOTING | 7 |
| PARTS LIST - MAIN BODY ASSEMBLY | 8 |
| PARTS LIST - POWER UNIT | 9 |
| WARRANTY | 10 |

STANDARD OPERATING PROCEDURE

DO NOT use this machine unless you have been trained and assessed to a competent level in its safe use and operation, and have been given permission to use this



Safety glasses must be worn when operating this equipment



Long loose hair must be contained when operating this equipment



Safety footwear must be worn when operating this equipment



Close fitting/protective clothing must be worn when operating this equipment



Rings and jewellery must not be worn when operating this equipment

SAFETY INSTRUCTIONS
WARNING

FAILURE TO READ THESE WARNINGS MAY RESULT IN PROPERTY DAMAGE, PERSONAL INJURY AND/OR DEATH

- | | |
|-------------------------------------------------------------------------------------------------------------------------------------------------------------------------------------------------------------------------|-------------------------------------------------------------------------------------------------------------------------------------------------------------------------------------------------------------------------------------------|
| <ul style="list-style-type: none"> • Support load by appropriate means after lifting • Do not exceed rated capacity • Centre load on the jack saddle • Do not add accessories | <ul style="list-style-type: none"> • Only lift areas of the vehicle designated by the vehicle manufacturer. • Use as lifting device only • Use only on hard, level surface • Do not modify jack |
|-------------------------------------------------------------------------------------------------------------------------------------------------------------------------------------------------------------------------|-------------------------------------------------------------------------------------------------------------------------------------------------------------------------------------------------------------------------------------------|

- Consult the vehicles manufacturer's manual prior to the lifting of the vehicle
- Conduct a pre-operational check of the equipment
- Use the hydraulic jack for lifting and lowering only; the raised vehicle must be support on suitably rated vehicle support stands
- Use the hydraulic jack on a hard level surface capable of supporting the vehicle and the jack and ensure it is free to roll during lifting and lowering
- No person should remain in a vehicle that is being lifted
- Chock the un-lifted wheels of the vehicle
- Centrally locate the load on the head cap
- Support the vehicle on suitably rated vehicle support stands and remove the hydraulic trolley jack prior to commencement of work on the vehicle
- No person should get bodily under a vehicle that is supported only by a hydraulic trolley jack
- Position the jack to only lift on the areas of the vehicle specified by the vehicle manufacturer.
- Do not overload this jack beyond its rated capacity. Overloading this jack beyond its rated capacity can cause damage to or failure of the jack.
- Use only on hard level surfaces capable of sustaining the load. Use on other than hard level surfaces can result in jack instability and possible loss of load.
- Off centre loads and loads lifted when the jack is not level can cause loss of load or damage to the jack.
- Keep hands & feet clear of the jack hinge mechanism & ground contact area when lowering the load.
- This jack is designed to be used with a 115mm diameter head cap and a handle of 1400mm length.
- Modifications must not be carried out or accessories added

INTENDED USE

A heavy-duty floor jack designed for lifting and lowering (NOT SUPPORTING) loads in an automotive workshop with added capacity and maximum lift height required to handle most UTES, SUV's and light commercial vehicles.

WARNING DIAGRAM

 **WARNING**



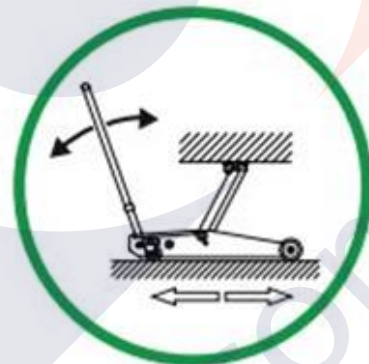
**DEATH OR INJURY
FROM
INCORRECT USE**



**FLAT HARD
LEVEL
GROUND**



**USE TWO
SUPPORT
STANDS**



**FREE TO ROLL
DURING LIFTING
AND LOWERING**

**REFER TO VEHICLE
MANUFACTURER'S
MANUAL FOR INSTRUCTIONS**

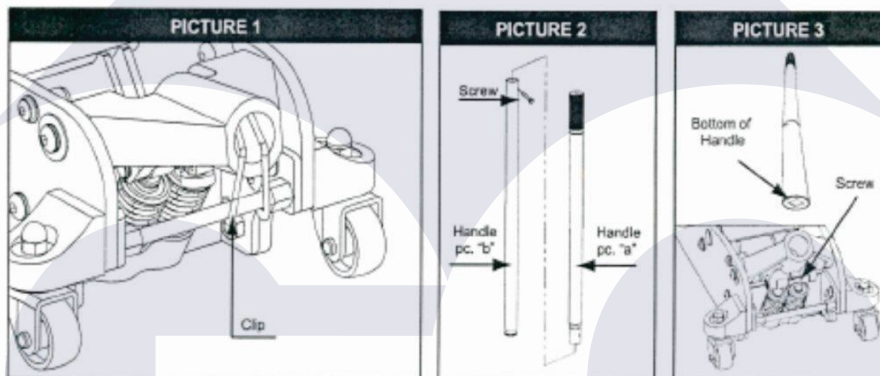
ASSEMBLY, OPERATION, PREVENTITIVE MAINTENANCE

1. FEATURES

The **TradeQuip "MADE for the TRADE"** Professional Quality low profile 2906T Garage Jack with twin piston 'quick lift' technology provides extra lift per pump of the handle. Fast lowering two-piece twist handle is fitted with a foam bumper preventing possible panel damage when being pumped. With a knurled steel handle for a steady grip and a solid, rolled edge welded steel construction, this heavy duty quick lift dual pump garage jack is built to last.

2. ASSEMBLY

- Prior to assembly remove the clip attached to the handle socket (picture 1). This clip is there for shipping purposes only and is not part of the jack.
- Insert handle "a" into handle "b" and secure with the screw provided, taking care not to catch fingers.
- Fully unfasten the screw located in the 'Handle Socket' to insert the assembled handle (picture 3).
- Line up the square hole located at the bottom of the handle over the square bolt inside the 'Handle Socket'.
- Secure the handle in place by tightening the screw in the 'Handle Socket'.



3. BEFORE USE

Prior to each use conduct a visual inspection checking for abnormal conditions, such as cracked welds, leaks, and damaged, loose, or missing parts.

- Consult the vehicle owner's manual to determine the location of specified lift points.
- Be sure to set the vehicle in park with the parking brake on and wheels securely chocked.
- Be sure that the vehicle and the jack are on a hard, level surface capable of sustaining the load.

4. OPERATION

Raising the Vehicle

Only attachments and/or handle supplied by the manufacturer shall be used. Lift only on area of the vehicle as specified by the vehicle manufacturer.

1. Ensure the jack and vehicle are on a hard level surface.
2. Follow the vehicle manufacturer's recommended guidelines for lifting. Engage the parking brake and chock each wheel in both directions to prevent inadvertent vehicle movement.
3. Close release valve by turning end of handle clockwise until firm resistance is felt. **DO NOT OVER TIGHTEN**
4. Refer to the vehicle manufacturer owner's manual to locate specified lifting points on the vehicle. Centre jack saddle under lift point.
5. Verify lift point, then pump handle to contact lift point. To lift, pump handle until load reaches desired height.
6. Transfer the load immediately to appropriately rated jack stands.

NEVER use hydraulic jack as a standalone device! **ALWAYS** transfer the lifted load **IMMEDIATELY** to a pair of appropriately rated jack stands. Use one pair of jack stands per vehicle. Rated capacity is per pair only! Do not exceed rated capacity.

We recommend using...

TQ TRADEQUIP
the trusted brand in equipment

4,000kg Jack Stands

Product Code: 1148T



MADE FOR THE TRADE

Lowering the Vehicle

Be sure all tools and personnel are clear before lowering load.

1. Raise load high enough to clear the jack stands. (refer 'Raising the vehicle')
2. Remove jack stands carefully (always used in pairs).
3. **Slowly** turn the handle counter-clockwise, but no more than 1/2 full turn.
4. Slowly lower the vehicle to the ground
5. **Maintain** control of the rate of speed at which the load lowers at all times!
6. The more you turn the handle counter-clockwise, the faster the load will come down.
7. After removing jack from under the vehicle, fully lower the saddle to reduce ram exposure to rust and contamination.

5. INSPECTION

- Prior to each use conduct a visual inspection checking for abnormal conditions, such as cracked welds, leaks, and damaged, loose, or missing parts.
- The Garage Jack shall be maintained in accordance with the maintenance instructions. No alterations or modifications shall be made to this Jack.
- Inspections shall be performed in accordance with this owner's manual.
- The Garage Jack must be inspected immediately if it is believed to have been subjected to abnormal load or shock.
- Owners and /or operators should be aware that repair of this product may require specialised equipment and knowledge (refer to maintenance section).

6. MAINTENANCE

Monthly maintenance is recommended. Lubrication is critical to jacks as they support heavy loads. Any restriction due to dirt, rust, etc, can cause either slow movement or cause extremely rapid jerks damaging the internal components. The following steps are designed to keep the jack well maintained and operational.

Important: Dirt is the greatest single cause of failure in hydraulic units. Keep the jack clean and well lubricated to prevent foreign matter from entering the system. If the jack has been exposed to rain, snow, sand, or grit it must be cleaned before it is stored or used.

Important: Use only good grade hydraulic jack oil. Avoid mixing different types of fluid and **NEVER** use brake fluid, turbine oil, transmission fluid, motor oil or glycerine. Improper fluid can cause premature failure of the jack and the potential for sudden and immediate loss of load. We recommend PENRITE HYDRAULIC JACK OIL or equivalent.

Adding oil

1. With saddle fully lowered set jack in its upright, level position. Remove oil filler plug.
2. Proper oil level will vary from just covering the inner cylinder to 6mm above the inner cylinder as seen from the oil filler plug hole. Reinstall the oil filler plug.

NOTICE: If the oil level is too low, the jack will not raise to its advertised maximum height.

DO NOT overfill the reservoir. An overfilled reservoir can cause a wide variety of performance problems and create an oily mess on the workshop floor! See the troubleshooting guide below.

Changing oil

For best performance and longest life, replace the complete fluid supply at least once per year.

1. With saddle fully lowered, remove the oil filler plug.
2. Lay the jack on its side and drain the fluid into a suitable container.

Note. Dispose of hydraulic fluid responsibly in accordance with local regulations.

3. Fill with oil until 6mm below the oil filler hole. Reinstall oil filler plug.

Lubrication

A periodic coating of light lubricating oil to pivot points, axles and hinges will help to prevent rust and assure that wheels, casters and pump assemblies move freely.

Cleaning

Periodically check the pump piston and ram for signs of rust or corrosion. Clean as needed and wipe with an oily cloth. Note: Never use sandpaper or abrasive material on these surfaces.

7. STORAGE

When not in use, store the jack with saddle fully lowered out of the elements. Do not let the jack be exposed to water.

- Check the ram every three months for any sign of rust or corrosion. Clean as needed and wipe with an oily cloth. When not in use always leave the saddle and ram all the way down.
- Always store your jack in the fully lowered position. This will help protect critical areas from corrosion. Do not use brake or transmission fluids or regular motor oil as they can damage the seals.

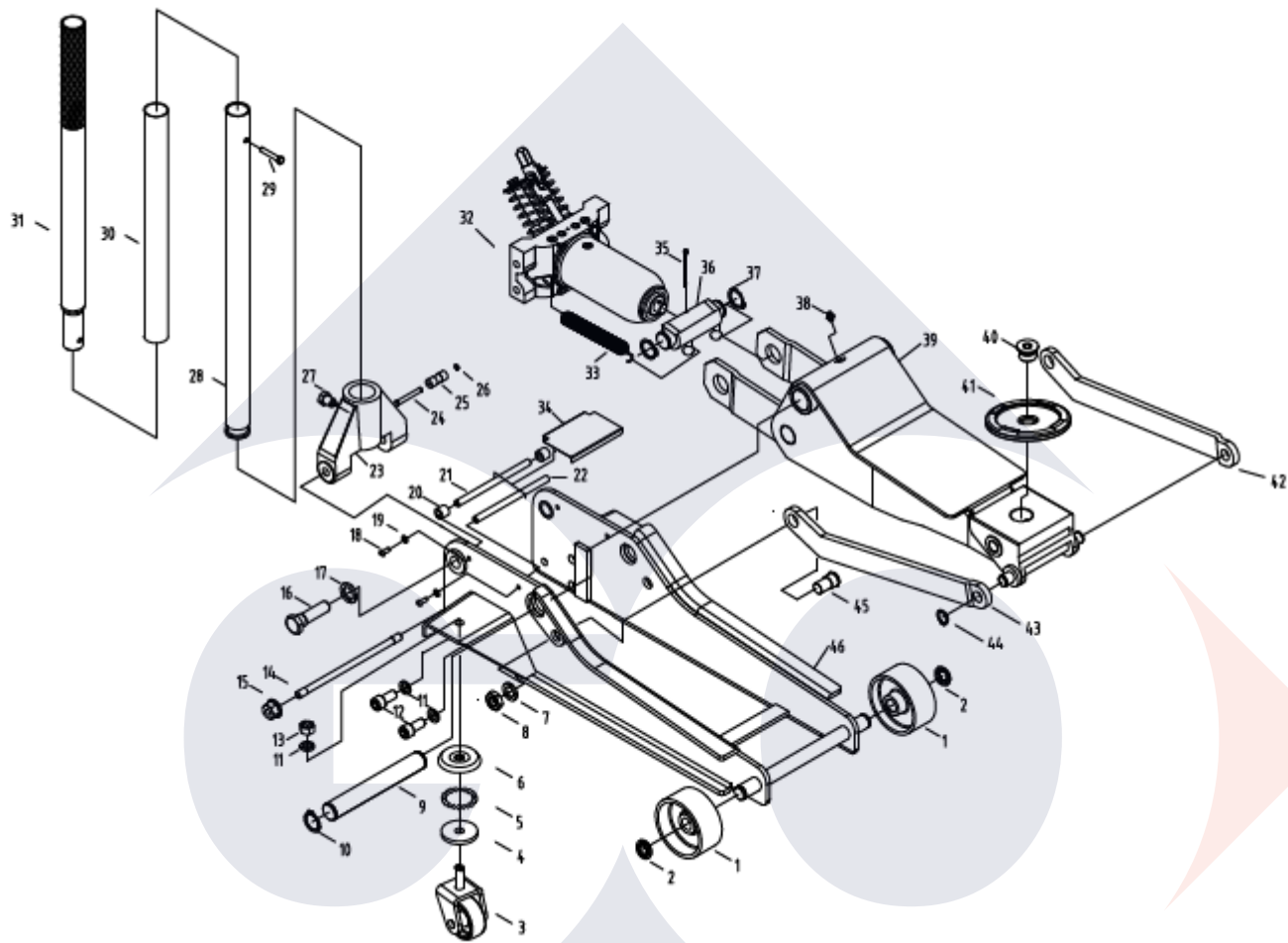
8. SERVICE & REPAIR

Any jack found damaged in any way, or found to be worn or operates abnormally should be removed from service until repaired by an authorised service agent. Owners and / or operators should be aware that repair of this product may require specialised equipment and knowledge. Only authorised parts, labels, decals shall be used on this equipment. Annual inspection of the jack is recommended and can be made by an authorised repair facility to ensure that your equipment is in optimum condition and that the equipment has the correct decals and safety labels specified by the manufacturer.

TROUBLESHOOTING

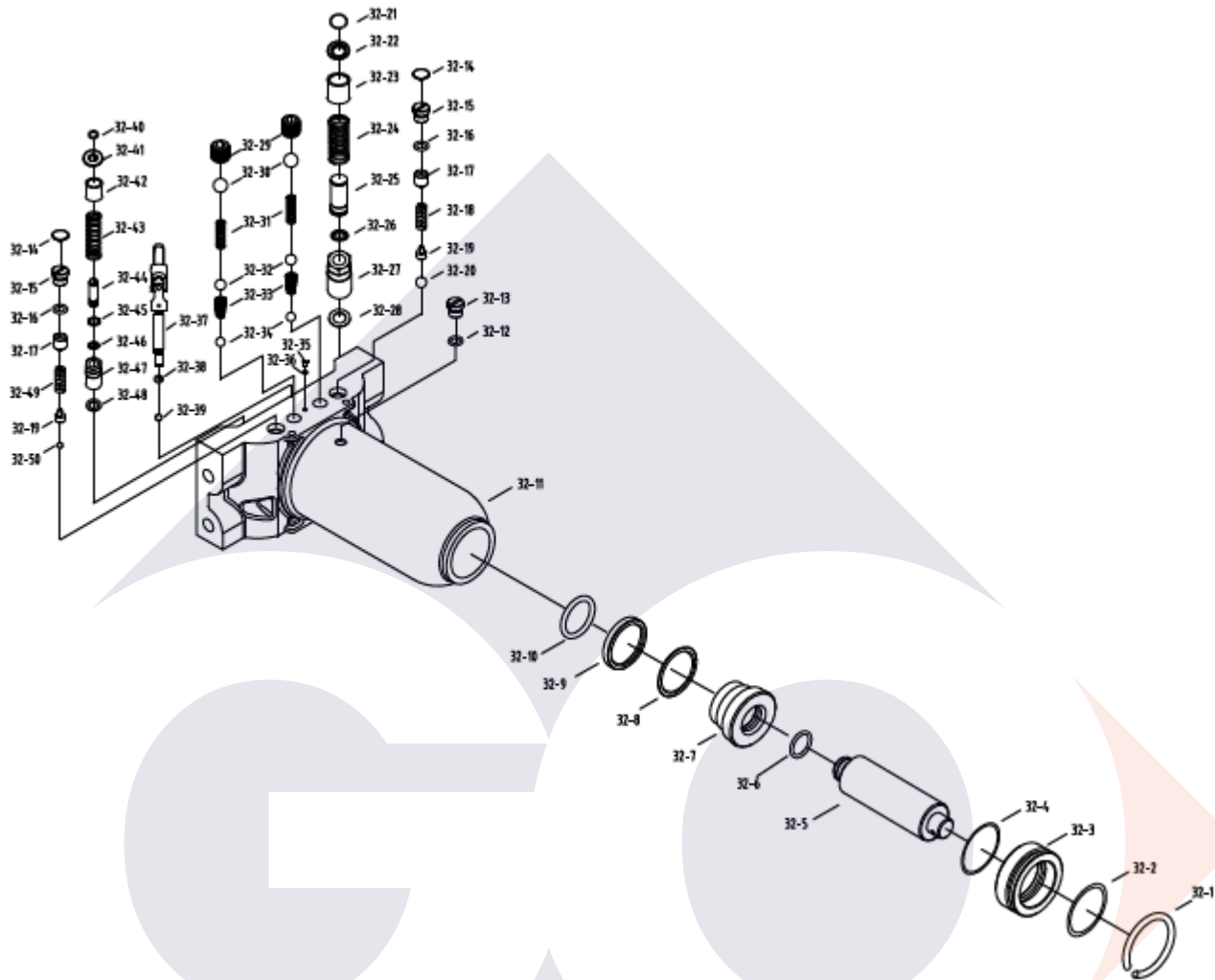
| PROBLEM | POSSIBLE CAUSE | ACTION |
|-------------------------------------------|----------------------------------------------------------------------------------------------------------------------------|------------------------------------------------------------------------------------------------------------------------------------------------------------------------------------------------------------------------------------------------|
| Jack will not lift load | <ul style="list-style-type: none"> • Release valve not tightly closed • Load is too heavy | <ul style="list-style-type: none"> • Ensure release valve it tightly closed • Consider higher capacity jack |
| Jack will lift, but not maintain pressure | <ul style="list-style-type: none"> • Release valve not tightly closed • Hydraulic unit malfunction | <ul style="list-style-type: none"> • Ensure release valve is tightly closed. • Discontinue use and contact service agent |
| Jack will not lower after unloading | <ul style="list-style-type: none"> • Reservoir overfilled • Linkages binding | <ul style="list-style-type: none"> • Drain fluid to proper level • Clean and lubricate moving parts |
| Poor lift performance | <ul style="list-style-type: none"> • Fluid level low • Air trapped in system | <ul style="list-style-type: none"> • Ensure proper fluid level • Purge air from hydraulic system • With ram fully retracted, remove oil filler plug to let pressurised air escape. Reinstall oil filler plug. |
| Will not lift to full extension | <ul style="list-style-type: none"> • Fluid level low | <ul style="list-style-type: none"> • Ensure proper fluid level |

PARTS LIST - MAIN BODY ASSEMBLY



| Part # | Description | QTY | Part # | Description | QTY |
|--------|---------------------|-----|--------|----------------------|-----|
| 1 | Front Wheel | 2 | 24 | Shaft | 1 |
| 2 | Washer | 2 | 25 | Roll Wheel | 1 |
| 3 | Rear Wheel Assembly | 2 | 26 | Retainer | 1 |
| 4 | Bearing Bottom | 2 | 27 | Screw | 1 |
| 5 | Steel Ball | 38 | 28 | Lower Handle | 1 |
| 6 | Bearing Cap | 2 | 29 | Bolt | 1 |
| 7 | Washer | 2 | 30 | Handle Cover | 1 |
| 8 | Nut | 2 | 31 | Upper Handle | 1 |
| 9 | Arm Shaft | 1 | 32 | Valve Grip | 1 |
| 10 | Retainer | 2 | 33 | Spring | 2 |
| 11 | Washer | 6 | 34 | Cover | 1 |
| 12 | Screw | 4 | 35 | Pin | 1 |
| 13 | Nut | 2 | 36 | Connection Bar | 1 |
| 14 | Rear Shaft | 1 | 37 | Retainer | 2 |
| 15 | Bolt | 2 | 38 | Grease Fitting | 1 |
| 16 | Bolt | 2 | 39 | Arm Assembly | 1 |
| 17 | Washer | 2 | 40 | Screw | 1 |
| 18 | Screw | 4 | 41 | Saddle | 1 |
| 19 | Washer | 4 | 42 | Left Connection Rod | 1 |
| 20 | Retainer | 2 | 43 | Right Connection Rod | 1 |
| 21 | Return Rod A | 1 | 44 | Retainer | 2 |
| 22 | Return Rod | 1 | 45 | Bolt | 2 |
| 23 | Handle Socket | 1 | 46 | Side Plate Assembly | 1 |

PARTS LIST - POWER UNIT



| Part # | Description | QTY | Part # | Description | QTY |
|--------|-------------------------|-----|--------|-------------------------|-----|
| 32-1 | Retainer | 1 | 32-26 | Y-ring | 1 |
| 32-2 | O-ring | 1 | 32-27 | Big Pump Body | 1 |
| 32-3 | Retaining Collar | 1 | 32-28 | Cooper Washer B | 1 |
| 32-4 | O-ring | 1 | 32-29 | Screw | 2 |
| 32-5 | Piston Rod | 1 | 32-30 | Steel Ball | 2 |
| 32-6 | Retainer | 1 | 32-31 | High Pressure Spring | 2 |
| 32-7 | Piston Head | 1 | 32-32 | Steel Ball | 2 |
| 32-8 | Nylon Collar | 1 | 32-33 | Lower Pressure Spring | 2 |
| 32-9 | Bolt | 1 | 32-34 | Steel Ball | 2 |
| 32-10 | O-ring | 1 | 32-35 | Screw | 1 |
| 32-11 | Valve Grip | 1 | 32-36 | O-ring | 1 |
| 32-12 | O-ring | 1 | 32-37 | Release Valve | 1 |
| 32-13 | Valve Grip | 1 | 32-38 | O-ring | 1 |
| 32-14 | Cap | 2 | 32-39 | Steel Ball | 1 |
| 32-15 | Screw | 2 | 32-40 | Retainer | 1 |
| 32-16 | O-ring | 2 | 32-41 | Pressure Spring | 1 |
| 32-17 | Screw | 2 | 32-42 | Pump Core Dusting Cover | 1 |
| 32-18 | Spring | 1 | 32-43 | Pressure Spring | 1 |
| 32-19 | Ball Valve Seat | 2 | 32-44 | Pump Core A | 1 |
| 32-20 | Steel Ball | 1 | 32-45 | Pump Core Retainer A | 1 |
| 32-21 | Retainer | 1 | 32-46 | Pump Core Y-ring A | 1 |
| 32-22 | Spring Cover | 1 | 32-47 | Pump Body A | 1 |
| 32-23 | Pump Core Dusting Cover | 1 | 32-48 | Cooper Washer A | 1 |
| 32-24 | Pressure Spring | 1 | 32-49 | Spring | 1 |
| 32-25 | Pump Core | 1 | 32-50 | Steel Ball | 1 |

WARRANTY

TradeQuip products have been carefully tested and inspected before shipment and are guaranteed to be free from defective materials and workmanship for a period of 12 months from the date of purchase except where tools are hired out when the guarantee period is ninety days from the date of purchase.

Should this piece of equipment develop any fault, please return the complete tool to your nearest authorised warranty repair agent or contact TQB Brands Pty Ltd Warranty team – warranty@tqbbrands.com.au.

If upon inspection it is found that the fault occurring is due to defective materials or workmanship, repairs will be carried out free of charge. This guarantee does not apply to normal wear and tear, nor does it cover any damage caused by misuse, careless or unsafe handling, alterations, accident, or repairs attempted or made by any personnel other than the authorised TQB Brands Pty Ltd repair agent.

This guarantee applies in lieu of any other guarantee expressed or implied and variations of its terms are not authorised.

Your TQB Brands Pty Ltd guarantee is not effective unless you can produce upon request a dated receipt or invoice to verify your proof of purchase within the 12month period.

Consumer Guarantee

Our goods come with a guarantee that cannot be excluded under the Australian Consumer Law. You are entitled to a replacement or refund for a major failure and compensation for any other reasonably foreseeable loss or damage. You are also entitled to have the goods repaired or replaced if the goods fail to be of acceptable quality and the failure does not amount to a major failure.



All images and illustrations shown are for reference purposes only. All information, specifications and illustrations in this manual are based on the latest information available at the time of publication and are subject to change without notice. The information in this manual is periodically revised to ensure the latest information is included. Download the latest version of this manual and other related technical documentation from www.tqbbrands.com.au.